



REVIEW/HYPOTHESIS

The Placental Buffer Effect and the Pathophysiology of COVID-19: Possibilities for a Guide Aimed at Pregnant and Postpartum Women Considering Praxis: Theory, Clinical and Laboratory Observation

Luiz Gonzaga Francisco de Assis Barros D'Elia Zanella, MD^{1,2*}  and Miriane Marques Borges, MD³ 

¹Infectious Diseases Department (MI-HSPE), Hospital do Servidor Público do Estado de São Paulo, Pedro de Toledo Avenue, 1800, 04029-000, Vila Clementino, São Paulo, SP, Brazil

²PhD Program in Allergy and Immunopathology, School of Medicine, University of São Paulo, Dr. Arnaldo Avenue, 01246-903, São Paulo, SP, Brazil

³Women's Health Reference Center Perola Byington Hospital, Brigadeiro Luís Antônio Avenue, 683 Bela Vista, São Paulo, SP, Brazil

***Corresponding author:** Luiz Gonzaga Francisco de Assis Barros D'Elia Zanella, MD, Infectious Diseases Department (MI-HSPE), Hospital do Servidor Público do Estado de São Paulo, Pedro de Toledo Avenue, 1800, 04029-000, Vila Clementino, São Paulo, SP, Brazil; PhD Program in Allergy and Immunopathology, School of Medicine, University of São Paulo, Dr. Arnaldo Avenue, 01246-903, São Paulo, SP, Brazil



Abstract

SARS-CoV-2 causes placental changes that can lead to embryonic/foetal death. However, the pregnant woman who in other diseases is considered (e.g., H1N1) a risk group for the development of severe forms of the disease, in COVID-19 rarely evolves with severity, except when childbirth occurs, and the woman loses the bond with the placenta. The answer for the pregnant woman is in the immunosuppression promoted by the placenta, in the metabolism of tryptophan and phenylalanine (Try) and functions of furins and cathepsins. This article discusses at crucial points the main pathophysiological mechanisms that can explain the events observed during pregnancy and the peri-and postpartum phenomena. It also shows the vital role of the placenta in this period of gestation, which is one of the most significant evolutionary adaptations that humans have in the face of SARS-CoV-2 infection. The studies for the elaboration of this article could also bring to light theories about the formation of the syncytial lung in COVID-19, about the physiology of the Faget's Sign and justify new therapeutic approaches that should be carried out seeking a better outcome for patients in this case aimed at pregnant and postpartum women. This article names the main clinical manifestations of COVID-19 as the thrombometabolic and

immune tolerant syndrome induced by SARS-CoV-2 infection (TMITSy-CoV-2). Finally, this article aims to bring to light a host-parasite interaction that, if well understood, can help in the management of the pregnant woman and the first postpartum moments, because even without specific medications, we can perform better clinical management, resulting in a good outcome for the pregnant woman and the fetus. Reading the [Appendix](#) is essential as it complements the general pathophysiology of COVID-19.

Introduction

More than one year of global changes due to COVID-19, a disease caused by SARS-CoV-2, a beta coronavirus. Coronaviruses (CoVs) are a family of positive-stranded RNA viruses with envelopes widely distributed among mammals and birds that cause respiratory and intestinal infections in animals and humans. Brazil reported a disproportionately large number of maternal deaths attributed to COVID-19, particularly during the postpartum period. There were 160 notified deaths associated with COVID-19 among

pregnant and 106 deaths among postpartum hospitalized women considering data from the Brazilian Ministry of Health's Influenza Epidemiological Surveillance Information System. The high maternal death rates in Brazil are accompanied by large racial, geographic, and socioeconomic disparities. The COVID-19 mortality rate among pregnant and postpartum women is 7.2% in Brazil (data published in 2021/June). This percentage is 2.5 times higher than the national rate of 2.8%. According to the Covid-19 Observatory of the Oswaldo Cruz Foundation (Fiocruz) [1].

Pregnant women are not part of the risk group for hospital admission, but they present risks due to the pregnant woman's status and because there are cases of placental changes that may lead to the embryo or foetus death. Maternal mortality rate by COVID-19 increased and Brazil is responsible for an important portion of cases. This rate may be even higher due to underreporting, and it is necessary to consider "The Long COVID-19" as the greatest causes of mortality that is underreported. A recent study published COVID-19 is diagnosed in the third trimester. Thus, women with COVID-19 diagnosis or whose pregnancy ended earlier in pregnancy are underrepresented either because our study was exclusively hospital based or earlier infection may manifest with mild symptoms, which are either ignored or managed in primary care [2] (Tables 2, Table 3, Table 4 and Table 5 in the [Appendix](#)).

This article based on praxis aims to bring Hypotheses that allows physicians to have more possibilities to perform better management of the pregnant women facing a reality that show us no active antiviral to avoid COVID-19. Understanding the pathophysiology of COVID-19 is the way that we have to improve medical conduct and offer more safety to pregnant women and foetus.

Methods

Performing a search for articles in PubMed and SciELO databases - Scientific Electronic Library Online, Articles published in the last 20 years were considered valid. The search for articles was based on the following descriptors: (mj: ("Coronavirus Infections" OR "Pregnant Women") AND mh^a ("Infectious Complications in Pregnancy/MO" OR "Infectious Complications in Pregnancy/PA" OR "Infectious Complications in Pregnancy/PP")), considering all types of articles published on COVID-19 and pregnancy, as only 71 articles were found to be considered to perform the idea inside this manuscript. Only articles published between 2001 and 2021 and in English were considered, totalling 67 articles. Official sites of the Brazilian government and sites of universities were accepted to complement information and research. More information about mechanisms that may happen during the gestational period were complemented by search on Google Scholar. Articles in Russian were also included, mainly

because they addressed the shock in COVID-19, as many articles present interesting and unique views that help in understanding the pathophysiological mechanisms. Overall, considering all the subjects covered, 202 articles were selected based on the quality of publication and relevance to the subject, but 101 are in the main text. Many other articles were used to support the pathophysiology of SARS-CoV-2 and host hospitalization. The figures used from sources other than those drawn by the author himself had their origins duly identified. Figures modified or constructed by the author were performed using the platform www.biorrender.com (Created with BioRender).

Review

Placenta overview

The maternal organism only tolerates the foetus because the placenta develops an immune tolerance mechanism in the pregnant woman's body, so the embryo is not recognized as not proper. About four days after fertilization, the morula reaches the uterus and fluid from the uterine cavity passes through the pellucid zone to form - the blastocystic cavity. Blastomeres are separated into two parts with increasing fluid, and two structures arise due to this separation 1) Trophoblast: External cell layer that will form the embryonic part of the placenta and 2) Embryoblast: A group of centrally located blastomeres that will give rise to the embryo. After six days of fertilization, the embryo base is adhered to the uterine wall and physiologically by the embryoblast structure by the action of proteolytic metalloproteinases of the endometrium. On the opposite side, the trophoblast starts differentiation to 1) Cytotrophoblast: Inner cell layer and 2) Syncytiotrophoblast: Outer cell layer [3-5]. The Syncytiotrophoblast is highly invasive and responsible for producing the hormone hCG that

^amh: document subject descriptors mh: The search result was N records. N = number of found records. mj: primary descriptors of the document - example: mj: The search result was N records.

^bAPCs: Antigen-presenting cells BALF: Broncho alveolar lavage fluid FGF-β: Basic fibroblast growth factor CLIP: Class II-associated invariant chain COPD: Chronic obstructive pulmonary disease cTEC: Cortical thymus epithelial cells DPPI: Dipeptidyl aminopeptidase I ECM: Extracellular matrix EMT: Epithelial-mesenchymal transition ER: Endoplasmic reticulum Ets: Erythroblast transformation-specific transcription factor GAGs: Glycosaminoglycan hCATL: human cathepsin L HMWK: High-molecular-weight kininogens IFN: Interferon IL: Interleukin IR: Insulin receptor IRES: Internal ribosomal entry site L: Left-hand domain LMP: Lysosomal membrane permeabilisation LMWK: Low-molecular-weight kininogens M6PR: Mannose-6-phosphate receptor MMPs: Matrix metalloproteinase MOMP: Mitochondrial outer membrane permeabilisation PAI: Plasminogen activator inhibitor R: Right-hand domain ROS: Reactive oxygen species SMA: Smooth muscle actin TGF: Transforming growth factor TGN: Trans-Golgi network TIMP: Tissue inhibitors of metalloproteinase TNF: Tumour necrosis factor UTR: Untranslated regions VEGF: Vascular endothelial growth factor XIAP: X-chromosome-linked inhibitor of apoptosis

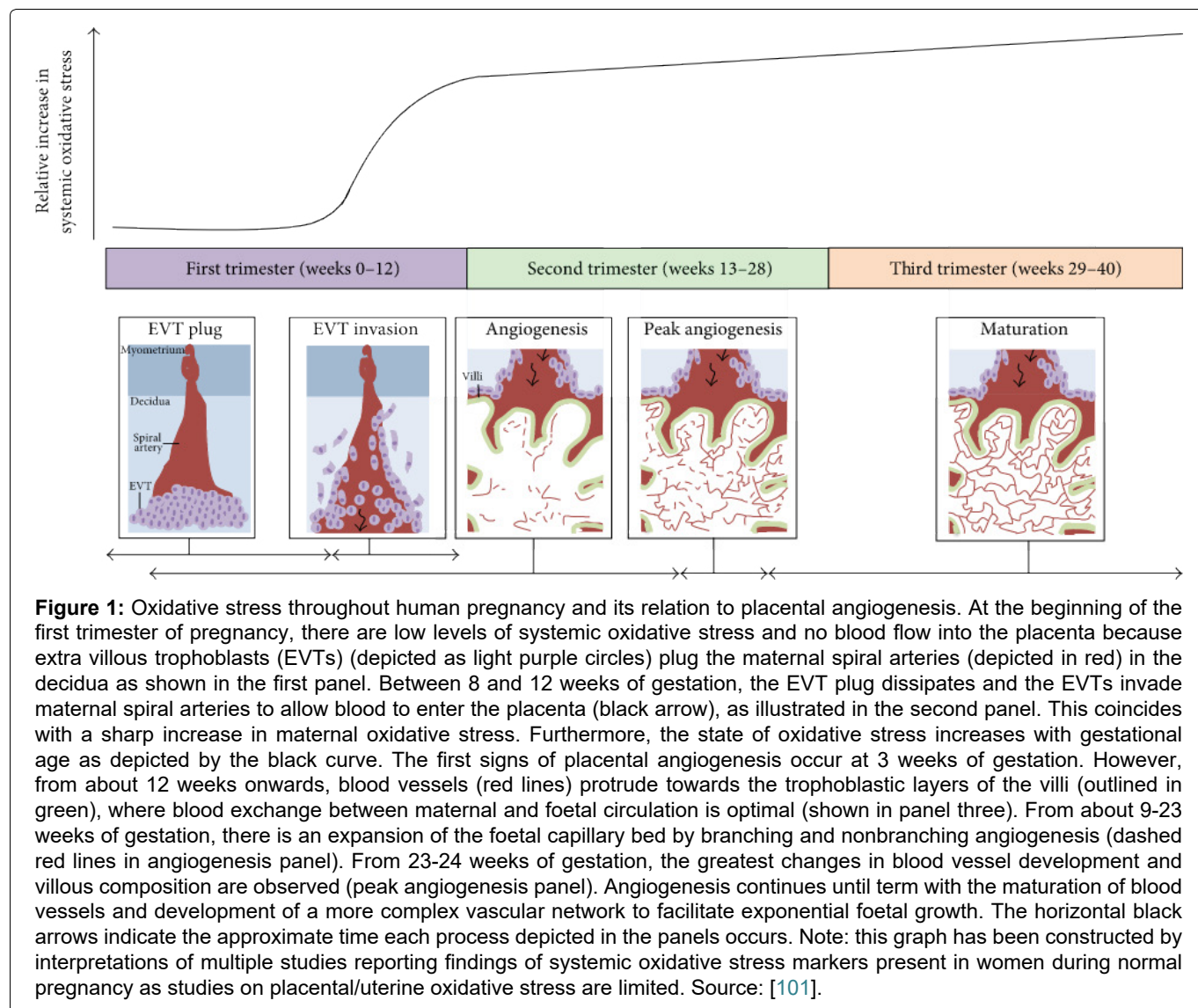


Table 1: The peptidases involved in the infection and replication of CoVs.

Peptidase	Catalytic type	Function	Origin	CoV	Reference
Chymotrypsin-like peptidase 3CL ^{pro} (M ^{pro})	Cysteine	Polypeptide processing	viral	All	Reviewed in [37]
PLP PL1 ^{pro}	Cysteine	Polypeptide processing, immune system evasion	viral	α-CoV (NL63, 229E), β-CoV (HKU1, OC43)	Reviewed in [49]
PLP PL2 ^{pro}	Cysteine	Polypeptide processing, immune system evasion	viral	All	Reviewed in [49]
ACE2	Metallo (Zinc)	Receptor	Host	SARS, NL63	Reviewed in [14,60]
Aminopeptidase N	Metallo (Zinc)	Receptor	Host	229E	[65]
DPP4	Serine	Receptor	Host	MERS	[12]
TMPRSS2	Serine	Spike protein proteolytic activation	Host	SARS, MERS, 229E, OC43, HKU1, SARS-CoV-2	[59,73,75,77,78,79,80]
Cathepsins L and B	Cysteine	Spike protein proteolytic activation	Host	SARS, MERS	[81,85]

ACE2: Angiotensin-Converting Enzyme 2; α-CoV: Alphacoronavirus; β-CoV: Betacoronavirus; CoV: Coronavirus; DPP4: Dipeptidyl Peptidase 4; PLP: Papain-Like Peptidase; MERS: Middle East Respiratory Syndrome; M^{pro}: Main Peptidase; SARS: Severe Acute Respiratory Syndrome; SARS-CoV-2: Severe Acute Respiratory Syndrome Coronavirus 2; TMPRSS2: Transmembrane Peptidase/Serine Subfamily Member 2.

Source: [31].

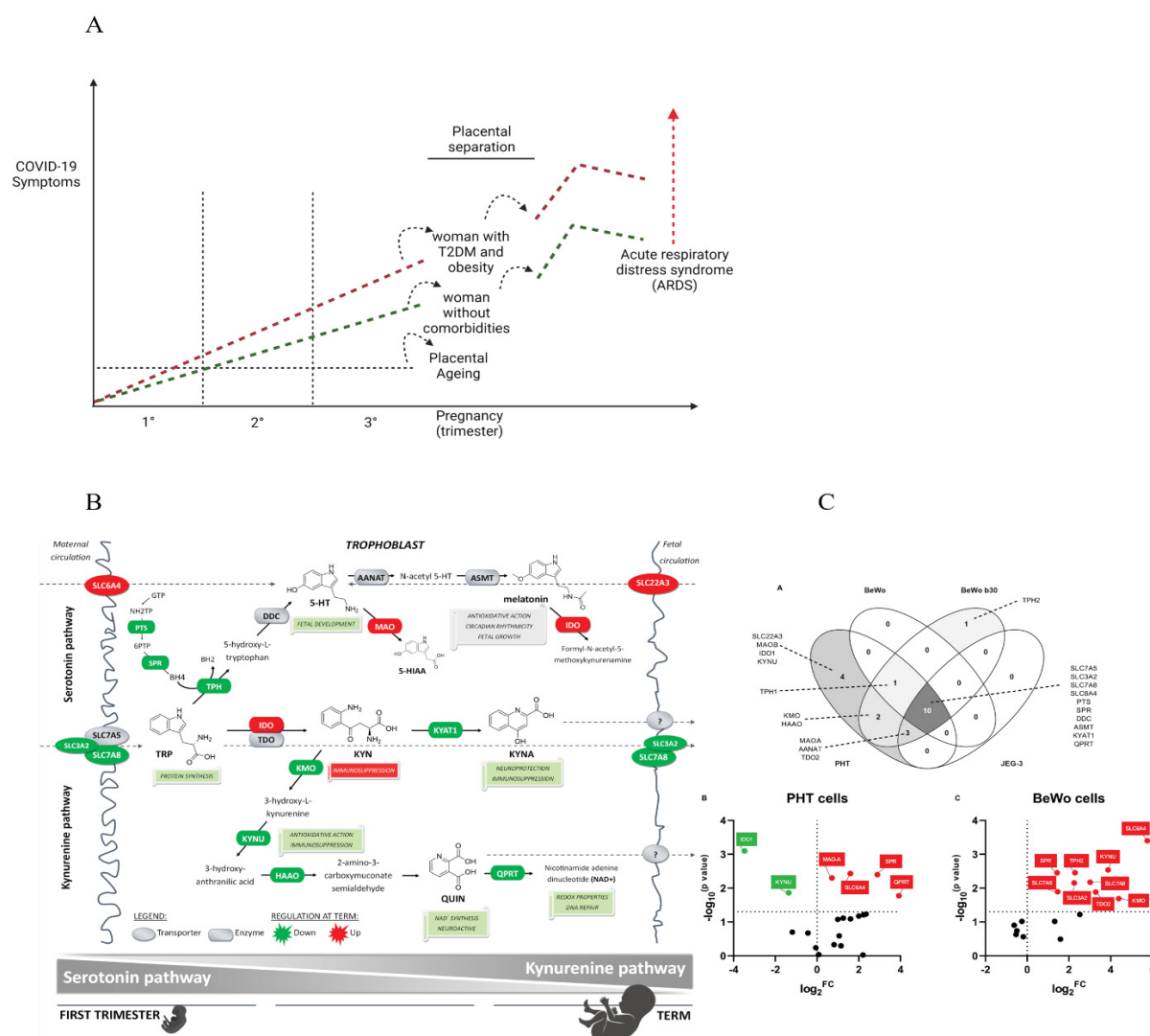


Figure 2: Symptomatic COVID-19 during pregnancy and immediately post-delivery. A mosaic built from figures adapted from Rona Karahoda, et al. A) The scheme theorizes why pregnant women progress to symptomatic forms of COVID-19 hours after childbirth has taken place. The immunosuppressive effect of KYN abruptly ceases to exist with the separation of the placenta, making the puerperal woman regain her immunocompetent status, re-establishing her capacity for inflammation against the SARS-CoV-2 virus. As aggravating factors, the puerperal woman may have presented significant gastrointestinal involvement by the virus, leading to a deficiency of Tryptophan (Try) and Phenylalanine (Phe). These metabolic changes are even more pronounced in women who have inflammatory comorbidities such as obesity and type 2 diabetes mellitus (T2DM). It is recurrent that women after childbirth evolve to orotracheal intubation or need a high demand for supplemental oxygen. SARS-CoV-2 infection can be a little symptomatic during the entire pregnancy, as the placenta provides substrates to the pregnant woman absent in the general population in COVID-19; furthermore, natural immunosuppression exerts a unique protective power of adaptation. Of human placentals concerning SARS-CoV-2. In the first's trimesters, pregnant women are not totally immune to viral aggressions, as multiple mechanisms can cause thrombotic events in the placenta, embryo/foetus and pregnant women, in addition to autoimmune events triggered by viral infection. B) Proposed gestational age-dependent changes in placental Try metabolic pathways. The schematic illustration is based on gene expression studies and rate-limiting enzymes/key transporters, protein, or functional activity. The first-trimester placenta preferentially uses Try to generate 5-HT involved in foetal development and synthesis of KYN metabolites implied with neuroprotection, antioxidative and redox effects, and DNA repair. On the other hand, the term placenta synthesizes significant amounts of KYN necessary for immune regulation activities. Collectively, our findings strongly indicate gestational age-related changes in placental handling of Try and its main metabolites, 5-HT and KYN. All the presented changes may reflect foetal demands for metabolites of either pathway to ensure proper embryonic and foetal development throughout pregnancy-Gene expression of Try pathway-related enzymes and transporters in placental-derived cells. Placental-derived cells were obtained from three different passages of BeWo, BeWo b30 (choriocarcinoma cell lines), and JEG cells and five primary human trophoblast cells (PHT) isolations. (A) Venn diagram of the overlap in gene expression among four cell lines. PHT and BeWo b30 cells share the highest homology, with the PHT cells additionally expressing four important genes, including the rate-limiting enzyme, IDO1, and the polyspecific organic transporter, SLC22A3. Subsequently, effect of differentiation in these two cell lines was tested, revealing dissimilarity between spontaneous syncytialization "(B)" and forskolin-induced differentiation "(C)". Data are visualized as volcano plots of fold changed expression in the differentiated cells, compared to the undifferentiated counterpart. Colour indicates statistically significant changes: red - up-regulation, green - down-regulation. Statistical significance was evaluated using the Mann-Whitney test. Choriocarcinoma-derived cell lines (BeWo, BeWob30, JEG-3). Source: [5].

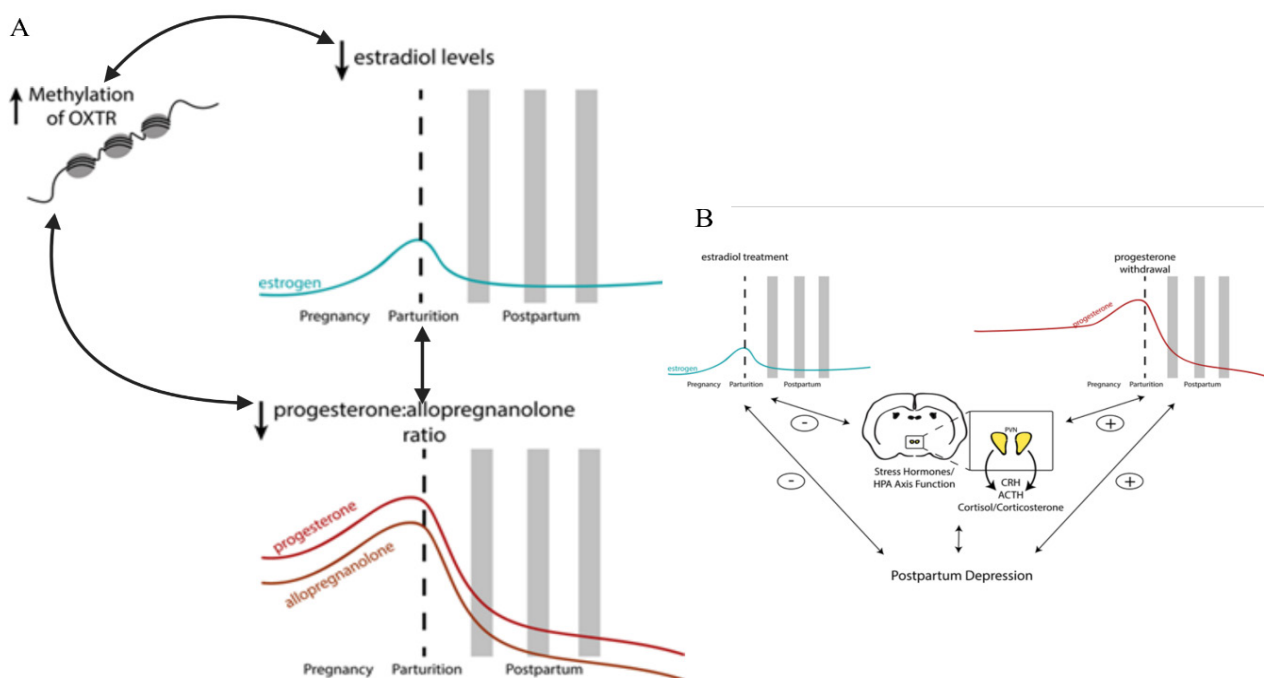


Figure 3: Postpartum depression (PPD). Figure adapted. PPD is associated with higher β -endorphin levels, reduced platelet serotonin levels, increased monoamine oxidase-A density, low omega-3 levels, and lower vitamin D levels. Stress hormones during the peripartum period have also been implicated in the underlying neurobiology of postpartum mood disorders. Neuroendocrine abnormalities PPD are associated with ovarian and lactogenic hormones (oestrogen, progesterone, oxytocin, prolactin) and stress hormones (cortisol, ACTH, CRH) and their neurosteroid metabolites; reproductive hormones impact the function of the hypothalamic-pituitary-adrenal axis (HPA axis) and vice versa. Strogen and progesterone play an ambiguous role in developing PPD - higher levels of progesterone are correlated with worse depression scores in postpartum women childbirth. Placental hormones are also implicated in the development of PPD: corticotropin-releasing hormone (CRH) has been shown to be a strong predictor of postpartum depression. Oxytocin (OXTR) and oxytocin (OXT) receptor: A single nucleotide polymorphism (SNP) in OXT was predictive of variation in breastfeeding duration and postpartum depression scores. At the same time, the interaction between SNP in OXTR and adverse life events did not correlate with maternal behaviours but was predictive of prepartum depression scores. Variations in DNA methylation of the OXTR gene in women with postpartum depression are negatively correlated with serum oestradiol levels. A significant interaction between oestradiol, OXTR DNA methylation and the ratio of allopregnanolone to progesterone was also saw in women with postpartum depression. Thus, epigenetic changes can influence the biochemical pathways associated with postpartum depression. It is important to consider that the inflammatory response in COVID-19 is intense and mediated by IL-6 (perhaps the most important cytokine in the Central Nervous System) and the immunosuppressive role of IL-10. In addition, tryptophan has its metabolism altered by kynurenine products due to IDO-1, and Kynurenine by-products are GABAergic and glutaminergic receptors ligands. Severe hypoxemia due to lung injury by SARS-CoV-2 and systemic injury causes adenosine overproduction that can mimic depressive and anxiety symptoms. Source: [111].

maintains hormonal activity in the corpus luteum during pregnancy and forms the basis for pregnancy tests. More about placental development, immune response and vasculogenesis, about changes in placental physiology in the face of gestational or Sars-CoV-2 induced diabetes are more detailed in the [Appendix](#). Figures numbered 1 through 22 remain in the main text as they are self-explanatory, but more details are presented in the [Appendix](#) in supplementary material [6-8] ([Figure 1](#), [Figure 2](#), [Figure 3](#) and [Figure 4](#)).

Theory of pulmonary syncytium by SARS-CoV-2 and why permissive hypercapnia must be abolished, a proscribed conduct

Cathepsins [9-13] identified as a lysosomal protease that degrades substrates in acidic compartments, Furins [14-16] ubiquitous proprotein convertase cleaves

substrates at the consensus sequence -Arg-X-Lys/Arg-Arg↓. For these two proteins to have their actions guaranteed, they need the microenvironment where they act to be acidic. Cathepsin and Furins are induced to be expressed mainly in environments with low oxygen tension, that is, in a hypoxemic environment. Both proteins are related to mental diseases, cardiovascular diseases and the development of neoplasms and metastasis. However, they also participate essentially and fundamentally in protein processing when patients are in homeostasis. They also play an essential role in placental implantation and the process of invasive waves related to placental development and implantation, and these reasons justify their presence, in high concentrations, in syncytiotrophoblast. Cathepsin L [16-18] and the rasHa oncogene are expressed in two coincident waves corresponding to periods during which the placenta is invasive and just before parturition. Large

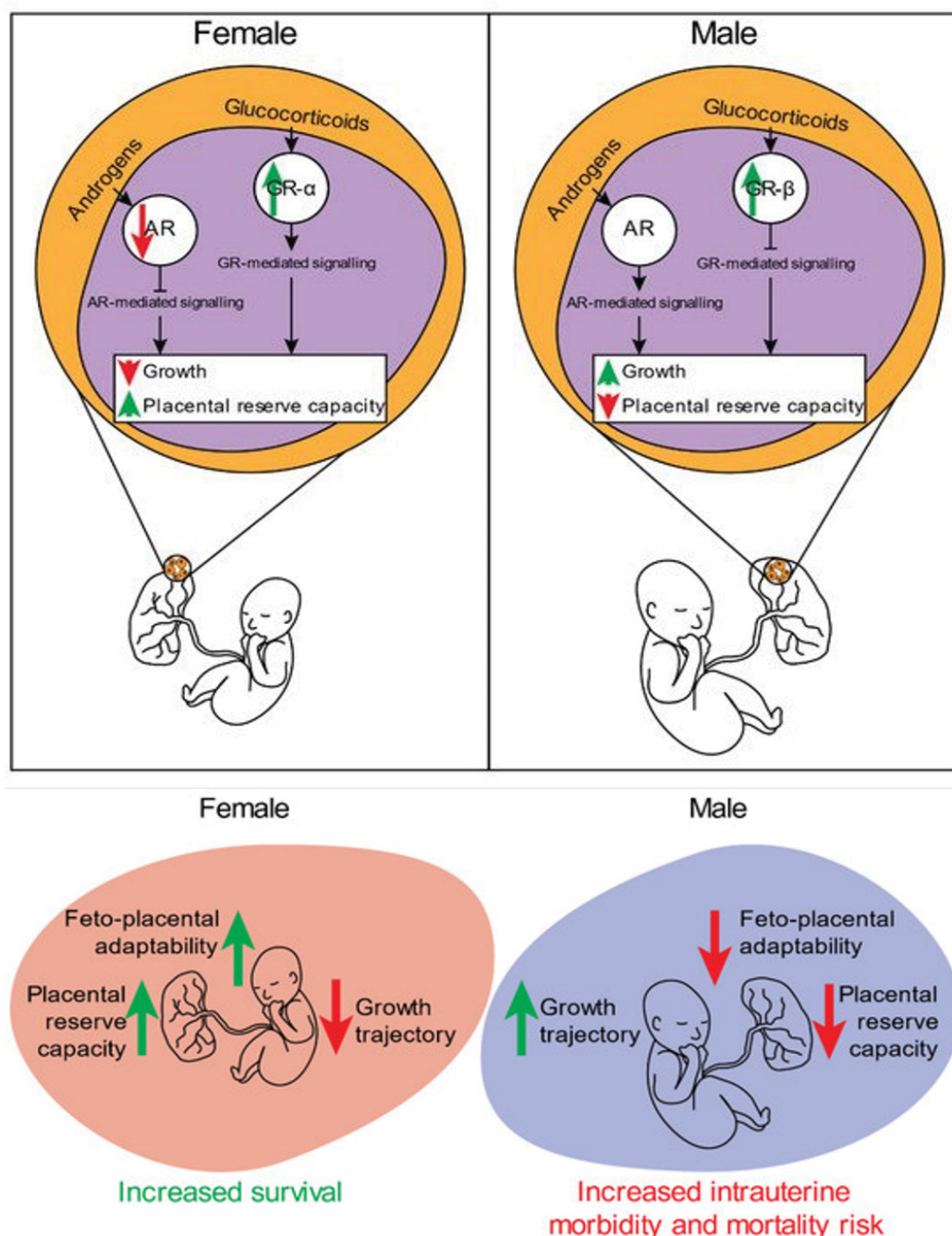
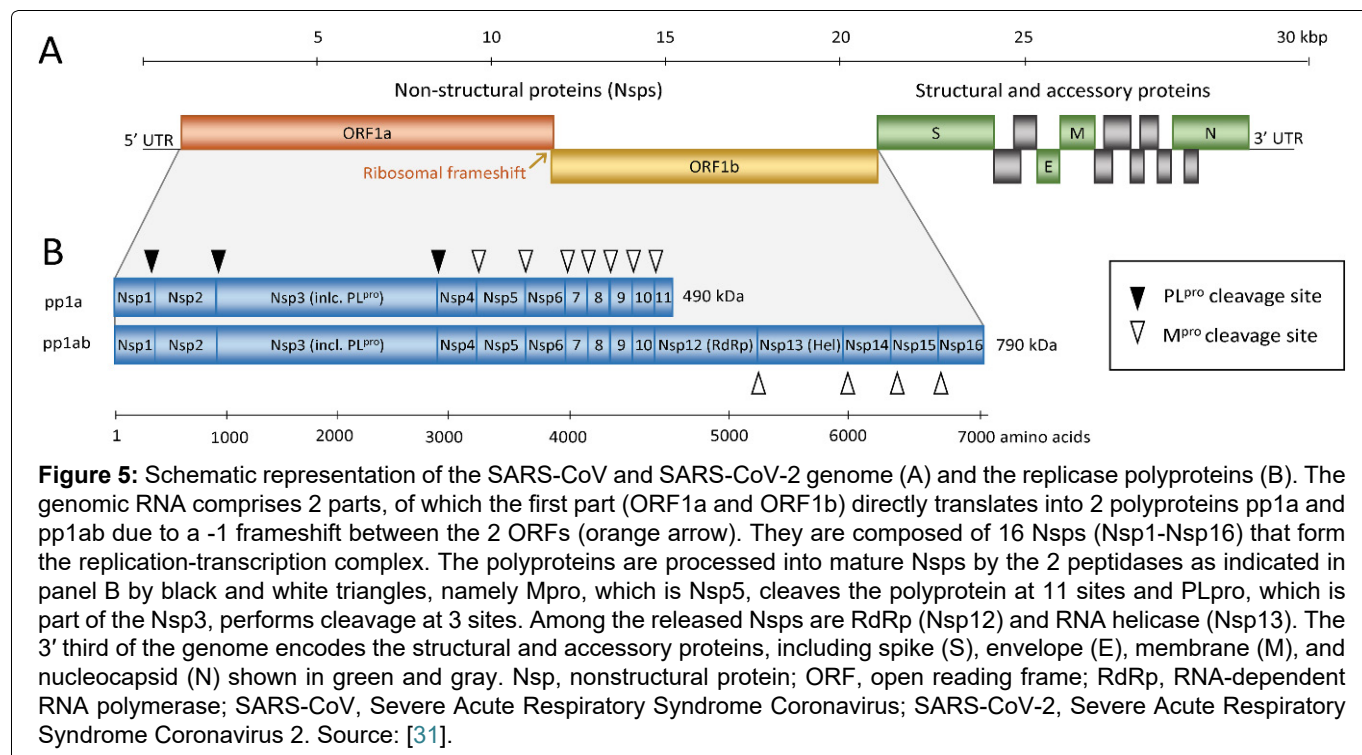


Figure 4: Overview of sex-specific in utero adaptations that drive differences in growth and survival outcomes. In females, increased foeto-placental adaptability, and placental reserve capacity result in increased survival rates at the expense of a reduced growth trajectory, whereas the opposite is observed in males. Changes in GR expression and localisation may contribute to sex-specific differences in growth outcomes. Placentae from IUGR females have been shown to increase nuclear GR α expression in both extra villous trophoblast (EVT) and syncytiotrophoblast cells (as measured by immunohistochemistry in humans) and increased nuclear expression of GR α D1-3 isoforms (as measured by Western blot in mice). Unlike in females, growth restriction in males was associated with increased GR β expression in humans, and a decrease in the activity of GR α in mice, as determined by its cytoplasmic sequestration. These sex-specific differences in the placental responsivity to changes in glucocorticoids favour the work conducted in human population studies of maternal asthma associated with sex-specific intrauterine growth outcomes. Throughout gestation, the levels of maternal circulating androgens including testosterone, dihydrotestosterone (DHT), dehydroepiandrosterone (DHEA), and androstenedione (A4) increase three-fold by the third trimester when compared to non-pregnant levels. There are sex differences in the concentrations of circulating fetal and maternal androgens, with levels higher in male fetuses and in the maternal circulation of individuals carrying a male fetus. Fetal derived androgens are readily aromatised to estrogens by the placental cytochrome P450 (CYP) enzyme, CYP19A1 (aromatase). These fetal-derived androgens are required for placental-biosb synthesised estrogens, an important physiological process that modulates uteroplacental vasculature. Although the placenta is known to be involved in the aromatisation of androgens, other studies have reported placental-specific androgen biosynthesis. Escobar, et al. 2011 reported third trimester human placentae were able to synthesise androgens de novo. More recently, levels of tissue-specific androgens were measurable in first trimester human male placentae; the levels of DHEA, A4, testosterone, and DHT were all detectable, with some of these androgens having higher levels when compared with liver-, adrenal-, or testis-specific levels. In line with these findings, the same study reported expression of genes involved in androgen biosynthesis in the male placenta. Source: [112].



amounts of cathepsin L in the placenta suggest that the proteinase has a significant function there. Expression of cathepsin L in the placenta is potentially under the control of the ras product gene p21; both are under developmental control [19-21] (Table 1 and Figure 5).

The performance of autopsies has shown that some lungs that progress with severity from COVID-19 have pneumocytes II modified to syncytium formation, and this phenomenon occurs mainly in cases where the disease has evolved into severe or critical forms [22-24].

This article shows that lesion caused by SARS-CoV-2 promotes a highly hypoxemic environment that induces the expression of cathepsins and furins which, in addition to their usual functions, also help in the viral replication of the coronavirus [16,25-27].

There is, in this process, a tendency to acidification of cell environment so that the functions of cathepsins and furins occur optimally. So, this justifies the difficulty in maintaining, in critically ill patients, an adequate pH in the blood gases and what happens is that, in the usual management of the severely ill patient COVID-19, the hypoxemic environment is allowed to be allowed, conduct called permissive hypercapnia [28].

This permissive hypercapnia has been allowed. Nevertheless, this article shows that this conduct must be proscribed. The critically ill patient should not remain with arterial blood gases showing acidosis due to elevated PCO_2 , allowing the cellular environment to remain acidified means allowing more cathepsins and Furins to be expressed, facilitating viral replication and dissemination, and enabling syncytium formation in lung cells. In other words, the syncytium formation process in lung cells shows that the hypoxemia of the

disease intensified by the tendency of the cell medium to try to acidify so that cathepsin and furin act efficiently is how COVID-19 perpetuates viral replication forms syncytia that also help SARS-COV-2 in its infection and is the phenomenon that is presented to us to manage in critically ill patients. The acidosis presented by many intubated patients is very difficult to reverse, justifying the medical management of permissive hypercapnia. The problem with this approach is that we are permissive with something that keeps the virus in replication and dissemination, in addition to allowing a severe tendency to immunosuppression and tolerance in these critically ill patients, justifying opportunistic infections and providing a highly tumorigenic environment [29-31].

Permissive hypercapnia must be proscribed in patients COVID-19, and the patient should be managed with improved mechanical ventilation and the use of 8.4% sodium bicarbonate in order to adjust the pH to the most physiological possible so that expression induction of Cathepsins and Furins, as well as the maintenance of a medium with optimal pH to carry out their functions, are blocked [32,33].

Corticosteroids, furins and cathepsins

This article shows the vital role of Methylprednisolone in attenuating the inflammatory manifestations promoted by SARS-CoV-2. More than this drug acting on classical inflammation pathways, corticosteroids seem to act on proteins that directly favour COVID-19 severity, that is, on furins and cathepsins [34].

The effect of Methylprednisolone (MTP), an anti-inflammatory drug, upon purified calpain and the Ca^{2+} -mediated degradation of endogenous proteins of spinal cord homogenate *in vitro* has been examined.

The activity of calpain purified from rabbit muscle was greatly inhibited in a dose-dependent fashion by MTP. Calpain-mediated degradation of myelin basic protein (MBP) was also inhibited by MTP and cathepsin B-mediated MBP breakdown. MTP acts as a proteinase (calpain) inhibitor and defines a new mechanism for its actions.

Cathepsin B-like activity was measured in lung secretions. The enzyme had a pH optimum of approximately 5.5 and had the characteristics of an alkaline-stable cysteine proteinase. Enzyme activity in the sputum from ten subjects with chronic bronchitis was significantly reduced after 5 days of treatment with prednisolone. A pharmacologic dose of Methylprednisolone (50 mg/kg) significantly delayed the subcellular redistribution of cathepsin D and the other hydrolases in the ischemic heart. Unlike untreated hearts, no evidence of enzyme diffusion from lysosomes could be demonstrated immunohistochemically in corticosteroid-treated ischemic hearts for over 45 min. This study demonstrates that corticosteroid pre-treatment does not prevent alterations in cardiac lysosomes during severe ischemia indefinitely, but it does significantly delay their development.

Cathepsins increased in cystic fibrosis and have a role in airway remodelling during fibrogenesis in pulmonary fibrosis. An association has led to the hypothesis that emphysema in subjects with normal serum alpha-antitrypsin concentrations arises as a result of an imbalance between the enzymes and inhibitors within the lung such that enzyme activity persists. The main serum and alveolar inhibitor of proteolytic enzymes are alpha-antitrypsin3, and severe deficiency of this protein is associated with the development of pulmonary emphysema. The sputum-to-serum concentration ratios of alpha-antichymotrypsin rose during corticosteroid treatment, and steroid treatment may increase protection against these proteolytic enzymes, which could benefit some patients, particularly those with recurrent bacterial infections [35,36].

Furin inhibits inflammatory responses in the myeloid cells by reducing the production of pro-inflammatory cytokines. The function of Furin in immunoregulation is not entirely clear, but its expression in immune cells is critical for the functional maturation of anti-inflammatory pro-TGF- β 1 cytokine and the suppressive function of regulatory T cells.

Furin levels were significantly elevated in Peripheral Blood (PB) and Synovial Fluid in some Rheumatic Disorders. Mononuclear cells, T cells, and monocytes from Rheumatoid Arthritis patients compared to healthy controls had Furin levels significantly associated with the prevailing prednisolone treatment, higher prednisolone doses, and increased C-reactive protein levels and Health and with functional maturation of anti-inflammatory protransforming growth factor- β 1

(pro-TGF- β 1) cytokine and the suppressive function of regulatory T cell. Some cytokines as IL-1 β , IL-2, IL-4, IL-6, IL-7, IL-10, IFN- γ , and TNF- α levels in plasma were correlated with Furin.

Recently a study showed differences in ACE2, TMPRSS2, and furin epithelial and airway gene expression are unlikely to confer enhanced COVID-19 pneumonia risk in patients with asthma across all treatment intensities and severity. ACE2 expression was inversely correlated with markers of type 2 immunity, with no influence of sex or use of nasal corticosteroids. The same article showed that segmental bronchial allergen challenge in adults with mild asthma led to decreases in ACE2 expression and that IL-13 reduces ACE2 expression on cultured bronchial epithelial cells. The data shows the importance of understanding the effects of TH2 and IL-17-driven inflammation, inhaled corticosteroids on airway epithelial cell ACE2 expression, and the susceptibility of these cells to infection and replication by SARS-CoV-2 [37,38].

This article highlights the importance of using corticosteroids in COVID-19, including pulse therapy. The use of corticosteroids deserves further clinical studies. However, in a situation in which we do not have specific medications, it is essential to show that corticosteroids have a fundamental role because they have nonspecific anti-inflammatory actions and can act in numerous ways, contributing to the improvement of the patient COVID-19 in moderate, severe and critical illness [39-41].

NAD/NADH+ and the warburg effect: Perhaps the placental buffering in SARS-CoV-2 infection (full text is in the [Appendix](#))

Mitochondria are multifunctional organelles, and their primary role is in ATP generation by oxidative phosphorylation (OXPHOS) using substrates derived from β -oxidation and the tricarboxylic acid cycle, and are also involved in cell signalling via the production of reactive oxygen species (ROS). ROS are a normal by-product of OXPHOS but, when produced in excess, e.g., during disrupted oxygen (O_2) or substrate supply, they can cause oxidative stress and damage DNA, lipids, and proteins [42-45].

Hypoxia is the main cause of foetal growth restriction at high altitudes and is a common feature of sea-level pregnancy complications. Some studies in rodents show that inhalation hypoxia adapts placental morphology and nutrient transport to the foetus depends upon the degree, timing, and length of O_2 restriction by the low oxygen environment and that, even as oxygen becomes available, glycolysis would be preferred to oxidative phosphorylation. Since oxidative phosphorylation has a more significant potential to produce free radicals, supporting glycolysis may act as a protective mechanism in preventing teratogenesis in a tissue that is undergoing

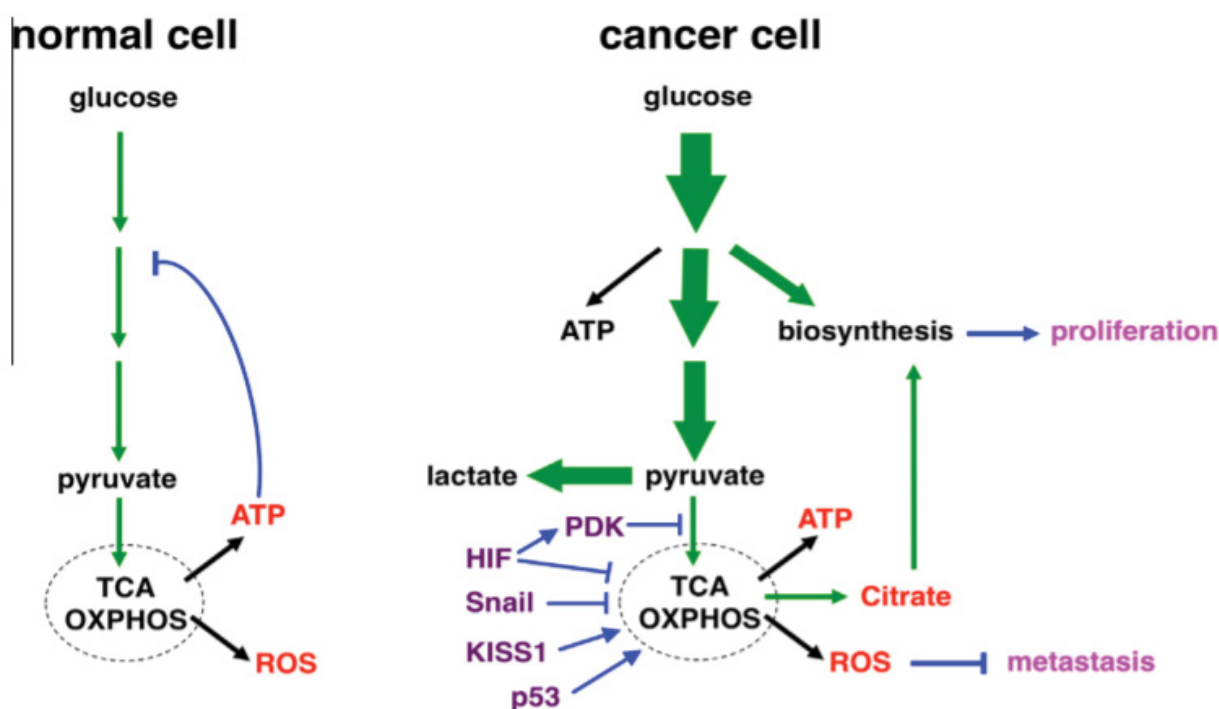


Figure 6: Text was modified by the author of this article. Schematic illustration of glucose metabolism in normal and cancer cells under normoxia. There is a idea that placenta uses the same via to generate ATP. (left) In normal (quiescent) cells, glucose is converted to pyruvate through glycolysis, and most pyruvate enters mitochondrial oxidative metabolism for efficient energy generation (in the form of ATP). Glucose is predominantly used for energy production. High levels of ATP attenuate glycolysis via feedback inhibition. (right) Cancer cells dramatically increase glucose uptake and glycolysis (indicated by bold arrows). A significant portion of glucose carbon is diverted to biosynthetic pathways to fuel cell proliferation. Pyruvate is preferentially shunted to lactate, resulting in increased lactate production. Oxidative metabolism persists, but is uncoupled from increased glycolysis. The respiration byproducts ROS exhibit anti-metastasis activity, which may explain why cancer cells keep glucose oxidation in check. The flux of glucose carbon is indicated by green arrows (The thickness of arrows reflects the relative amount of the flow). Major mitochondrial products are depicted in red; metastatic regulators are in purple; regulatory steps are in blue; and the metabolic effects on cancer are in pink. Source: [42].

rapidly (Figure 6 and Figure 7).

The placenta is compared with tumours and other proliferating or developing cells, the rate of glucose uptake dramatically increases and lactate is produced, even in the presence of oxygen and fully functioning mitochondria [46,47]. This pathway, known as The Warburg Effect (Figure 5 and Figure 6), is the regeneration of NAD⁺ from NADH in the pyruvate to lactate step that completes aerobic glycolysis. In this scenario, NADH produced by glyceraldehyde phosphate dehydrogenase (GAPDH) must be consumed to regenerate NAD⁺ to keep glycolysis active. This high rate of glycolysis allows supply lines to remain open that can, for example, siphon 3-phosphoglycerate (3PG) to serine for one-carbon metabolism-mediated production of NADPH nucleotides. The Warburg Effect might support a metabolic environment that allows for rapid biosynthesis to support growth and proliferation [17,48,49].

Thrombometabolic and immunotolerant syndrome induced by SARS-CoV-2 infection (TMITSy-CoV-2)

A first publication based on observations of COVID-19

patients already indicated to us a possibility that the infection by SARS-CoV-2 is responsible for autoimmune and immunosuppressive events and for causing a tolerant and tumorigenic environment. Time has come to say that this idea is, unfortunately, something real and that COVID-19 also causes dysmetabolism due to the need for oxygen that is almost always, in severe cases, not overcome due to intense hypoxemia and lack of substrates for aerobic respiration to be appropriately performed. Furins, cathepsins, Tryptophan metabolism shifted from the hepatic enzyme TDO to the inflammatory IDO-1 are examples of the multiple pathways that affect inflammation and immunosuppression in COVID-19, pathways that go far beyond the internalisation of ACE-2 and its impact on the Renin-Angiotensin-Aldosterone pathway [30,50].

In general, we are beginning to understand why even asymptomatic or mildly symptomatic patients may present some persistent inflammatory aftermath or symptoms of hypertension and dysglycemia, in addition to psychiatric conditions, after the infection. The virus passed through the human body at some point (with high or low inoculum), and some modification, no

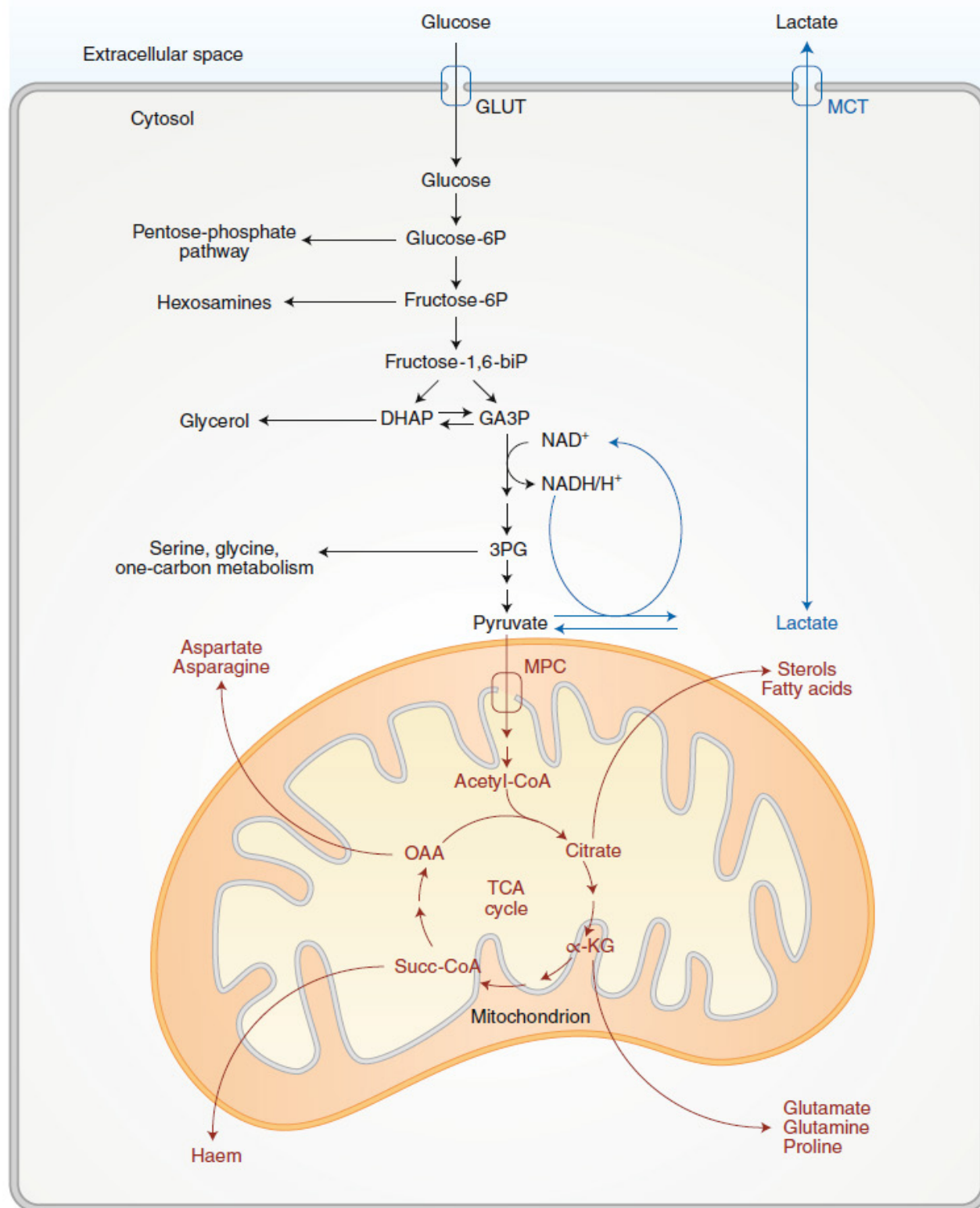


Figure 7: Glycolysis and TCA-cycle metabolism supply anabolic pathways. Activities related to glycolysis are in black, and activities related to pyruvate oxidation and the TCA cycle are in red. Both processes support cell growth by feeding branch pathways required for anabolism. In the Warburg effect, glycolysis terminates with lactate production and secretion despite the presence of oxygen. These latter steps (blue) provide a means of recycling NADH to NAD⁺ but result in loss of carbon from the cell upon lactate release. GLUT, glucose transporter; MCT, monocarboxylate transporter; MPC, mitochondrial pyruvate carrier; glucose-6P, glucose-6-phosphate; fructose-6P, fructose-6-phosphate; fructose-1,6-biP, fructose-1,6-bisphosphate; DHAP, dihydroxyacetone-phosphate; GA3P, glyceraldehyde-3-phosphate; 3PG, 3-phosphoglycerate; acetyl-CoA, acetyl coenzyme-A; α-KG, α-ketoglutarate; Succ-CoA, succinylCoA; OAA, oxaloacetate; NAD⁺, oxidized nicotinamide adenine dinucleotide; NADH, H⁺, reduced nicotinamide adenine dinucleotide. Source: [113].

matter how small, was caused. Multiple pathways are responsible for controlling inflammation, so there are

many possibilities of sequelae after infection by SARS-CoV-2 because it acts on these vias.

The inflammation in COVID-19 is multicausal: Direct tissue injury or metabolic and molecular changes, the parasite-host relationship, viral inoculum, patient comorbidities, time of exposure to hypoxemia (for the most symptomatic cases) and autoimmune events induced by autoantibodies and immune complex formation.

TMITSy-CoV-2 is a viral aetiology syndrome caused by SARS-CoV-2, with variable spectrum due to the multiple pathways influencing its clinical presentation. These factors depend on 1) The specific points of intersection of each patient concerning their genetic factors and their comorbidities, especially those considered to have an inflammatory profile, 2) On viral mutations that can direct the different variants to one or the other route, preferentially and 3) The hypoxemic environment, whose intensity and time of exposure to this environment have a directly proportional impact on the magnitude of the Syndrome.

It is clinically characterised by:

a) Thrombosis due to multiple causes: cathepsins impacting factor VIII, adenosine and platelet activation, changes in the endothelial response due to changes in tryptophan metabolism and the action of IDO-1, vasospasm due to angiotensin and aldosterone, or autoimmune events (Takotsubo Syndrome and Takayasu's Arteritis). Catastrophic events usually occur at multiple sites [51-54].

b) Generalised lymphocytic apoptosis: generalised apoptosis by cathepsins, by the action of hypoxemia and Kynurenin products, inducing cell death of CD4+ cells, CD8+ cells, B cells and mainly natural killer cells (NK cells). This fact justifies the existence of cases with reactivation of latent infectious diseases [55-58].

- Rapid growth of neoplasms: the magnitude of the disease can cause intense lymphopenia; the SARS-CoV-2 infection causes a highly tumorigenic environment.

- Immunoparalysis with the sustained presence of recurrent bacteremias, most of them by dermatological and mainly intestinal translocation (which, as an inflammatory site, is the leading site of bacterial dissemination due to barrier break).

c) Variable eosinophilia dependent on adenosine and tryptophan metabolites, in addition to inflammatory stimulation by IL-6 [30,59,60].

d) Basophilia [61].

e) Neuropsychiatric manifestations due to alterations in tryptophan metabolism, due to the action of Kynurenine by-products and adenosine excess. It includes peripheral pain and difficulty in sedation [13,62,63].

f) Anemia due to the use of pyrrolic rings to build enzymes in the inflammatory pathways, to a decrease in

serotonin in the bone marrow and general consumption of iron used for the metabolism of the intracellular airways [63-66].

Inflammation "*de novo*": Every time there is an increased need for oxygen supply, there is a stimulus for the inflammatory pathways of oxidative stress to be reactivated. This fact is real and reflects the high prevalence of the event "failure to extubate". Patients have worsening neurological and respiratory status, in addition to systemic repercussions with neutrophilia and generalized inflammation, causing bacterial translocation and refractory vasoplegic shock.

The extubation guidelines do not consider COVID-19 as a disease that presents different demands and as long as this disease is seen as an already known disease, we will be doomed to new inflammation and failures.

Discussion

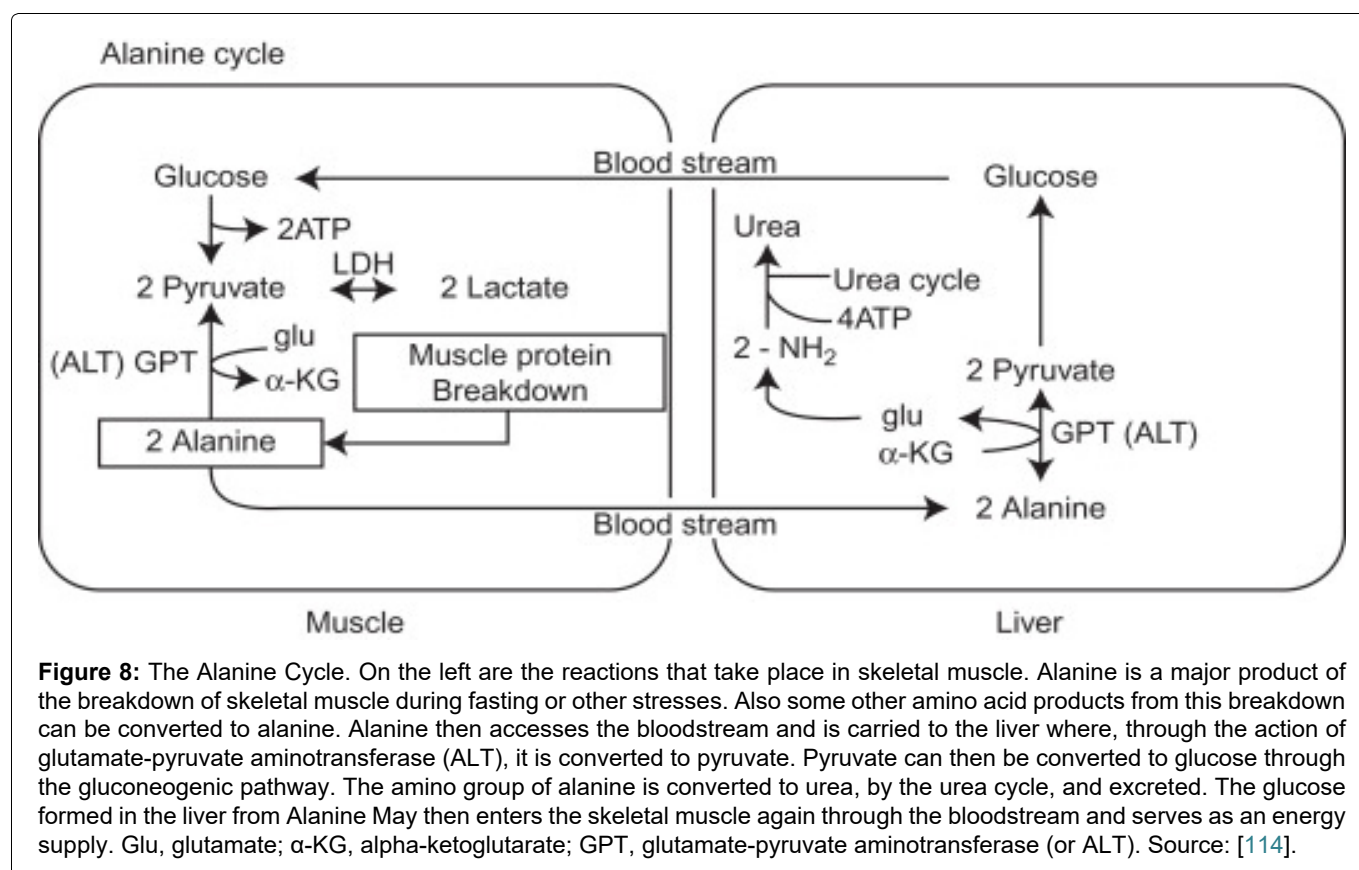
The relationship between SARS-CoV-2 and the pregnant woman deserves essential considerations.

Had it been thought that pregnant and postpartum women should be a risk group for severity, plenty of hospital admissions would happen. However, there were few admissions concerning pregnant women, as they usually present with no symptoms or oligosymptomatic, especially in early pregnancy; however, the embryo/foetus is not necessarily saved from suffering from SARS-CoV-2 infection.

Intriguingly, the closer to term, the more symptomatic the pregnant woman becomes due to coronavirus infection. Perhaps the common thinking has considered that, because the placenta naturally immunosuppresses pregnant women, the usual thing would be to be more susceptible to infections, which can reactivate latent viral diseases. However, COVID-19 has three distinct phases similar to other biphasic diseases such as yellow fever. COVID-19 has a viremic phase, followed by a period of defervescence, which may be the resolution of the disease or proceed to an immune-mediated inflammatory phase which, in the case of COVID-19, starts around 8 days after the patient perceives the first symptoms [2,67].

So far, there is no specific antiviral drug that is effective. Even in the face of many controversies, Corticosteroid is an essential [2,68] option in alleviating the symptoms caused by the cytokine storm, responsible for the period in which many orotracheal intubations occur (OTI), especially in people with predictors of severity (mainly obese, diabetic, and elderly) because they already have an inflammatory profile related to their comorbidities [40,69-71].

This article shows that the placenta plays a similar role to the Corticosteroids immunosuppressing the patient in COVID-19, reducing the magnitude of the inflammatory storm and its consequences. Thus, the treatment for a



disease that progresses with inflammation - and being biphasic (second phase without viral presence) - is to perform immunosuppression. The placenta naturally immunosuppresses pregnant women.

The structural and molecular changes that trigger specific diseases in pregnancy are based on changes in the formation of blood vessels, changes in invasive waves and changes that promote premature placental ageing mediated by multiple pathways, but with oxidative stress being one of the most critical factors and determinants of molecular and biochemical changes leading to structural ones.

SARS-CoV-2 infection promotes alterations based on the magnification of hypoxia and, more directly, aggression to the vascular endothelium. These changes simulate or are superimposed on pre-existing conditions such as diseases such as HELLP Syndrome, preeclampsia and eclampsia [72]. Furthermore, oxidative stress promotes [46,73] an environment of insulin resistance and the internalisation of ACE-2, an environment that allows pregnant women to develop a hypertensive period (Figure 8, Figure 9, Figure 10, Figure 11, Figure 12 and Figure 13) [74-76].

Once the virus infects the human cell, there is a trace of the internalisation of ACE-2 and for each person. The time for this protein to be expressed again is variable and very individual.

The materno-foetal interface presents syncytial cells with many Furins and Cathepsins, molecules that act under acidic pH. SARS-CoV-2 needs these proteins

to be able to perform better during the infection. Extreme hypoxia can lead to syncytium formation in pneumocytes II, as cathepsins and furins are induced by hypoxia. Perhaps this fact justifies the formation of syncytium in the lungs. This hypothesis raises an essential issue in the management of the COVID-19 patient, as there is permissiveness in the face of higher pCO_2 , conduct called permissive hypercapnia, however allowing the acidic and hypoxemic environment causes more cathepsins and furins to be expressed in a way that facilitates viral replication and protein processing. Based on this idea, the behaviour of permissive hypercapnia should be proscribed, and mechanical ventilation should be better managed, including the intravenous administration of 8.4% sodium bicarbonate, despite the current protocols.

COVID-19 provides a deficient cellular environment for aerobiosis. The internalisation of ACE-2 in enterocytes causes fewer amino acids to be absorbed, and among the most important for the proposed pathophysiology, we have Tryptophane (Try) and Phenylalanine (Phe). The Try deficit will cause a deficit of NAD/NADH⁺, of serotonin (5-HT) presenting a shift in metabolism for the production of Kynurenine and its derivatives, many of them toxic to the central nervous system, which explains the difficulty in sedating patients [77-79]. Try during inflammatory processes has been metabolised by IDO-1 [80-82], produced mainly by dendritic cells, macrophages and monocytes, mainly when stimulated by IFN-gamma. In physiological normality, Try is metabolised by the hepatic enzyme TDO. With the

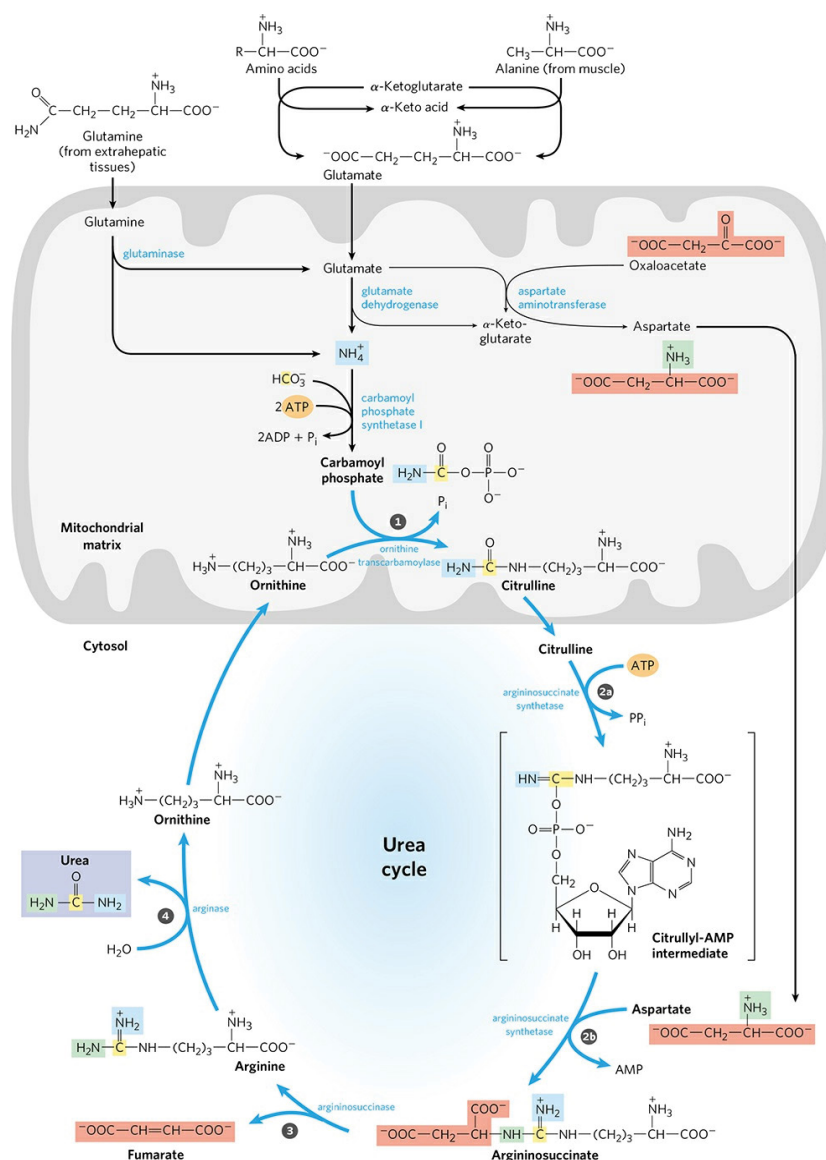


Figure 9: Urea synthesis is a five-step cyclic process with five distinct enzymes. The first two enzymes are present in mitochondria, while the others are located in the cytosol. Consequently, the urea cycle begins within the liver's mitochondria, but three of the subsequent steps take place in the cytosol; the cycle therefore encompasses two cell compartments. Urea has two amino groups ($-\text{NH}_2$), one derived from NH_3 in the mitochondrial matrix and the other from aspartate (generated in the mitochondria by transamination and transported to the cytosol). The carbon atom in urea is obtained from CO_2 (as HCO_3^-) produced by mitochondrial respiration. A) Synthesis of carbamoyl phosphate: NH_4^+ generated in liver mitochondria is used, along with CO_2 (as HCO_3^-) produced by cellular respiration, to form carbamoyl phosphate in the matrix. This ATP-dependent condensation reaction consumes two ATP and is irreversible and rate-limiting. It is catalyzed by a regulatory enzyme, carbamoyl phosphate synthetase I (CPS I), which requires N-acetyl glutamate for its activity. The mitochondrial form of CPS I is distinct from the cytosolic form (CPS II), which has a separate function in pyrimidine biosynthesis. CPS II accepts the amino group of glutamine and does not require N-acetyl glutamate for its activity. Carbamoyl phosphate, which functions as an activated carbamoyl group donor, now enters the urea cycle. B) Citrulline Formation: Carbamoyl phosphate donates its carbamoyl group to ornithine to form citrulline catalyzed by ornithine transcarbamoylase. Ornithine plays a role similar to that of oxaloacetate in the citric acid cycle. Ornithine and citrulline are basic amino acids. They are never found in the protein structure due to the lack of codons. The citrulline produced in this reaction is transported from the mitochondrial matrix to the cytosol by a transport system. C) Synthesis of Argininosuccinate: The second amino group of urea is incorporated in this reaction. Argininosuccinate synthetase condenses citrulline with aspartate to produce argininosuccinate. The condensation reaction takes place between the amino group of aspartate and the ureido (carbonyl) group of citrulline. D) A citrullinyl-AMP intermediate is formed. This step requires ATP and it is cleaved into AMP and pyrophosphate (PP_i). The latter is immediately decomposed to inorganic phosphate (P_i). E) Argininosuccinate Cleavage: Argininosuccinate is cleaved by argininosuccinase to give free Arginine and Fumarate, which is the only reversible step in the urea cycle. Arginine is the immediate precursor to urea. The fumarate thus formed enters the mitochondria to join the pool of TCA cycle intermediates that connect the TCA cycle, gluconeogenesis. Urea formation: In the last reaction of the urea cycle, the cytosolic enzyme arginase cleaves arginine to produce urea and ornithine. Arginase is activated by Co^{2+} and Mn^{2+} . Ornithine, thus regenerated, is transported to the mitochondria to initiate another round of the urea cycle. The urea thus formed passes into the bloodstream and kidneys and is excreted in the urine. Ornithine and lysine compete with arginine (competitive inhibition). Arginase is found mainly in the liver, while the rest of the urea cycle enzymes are also present in other tissues. For this reason, arginine synthesis can occur to varying degrees in many tissues, but only the liver can produce urea. Source: [115].

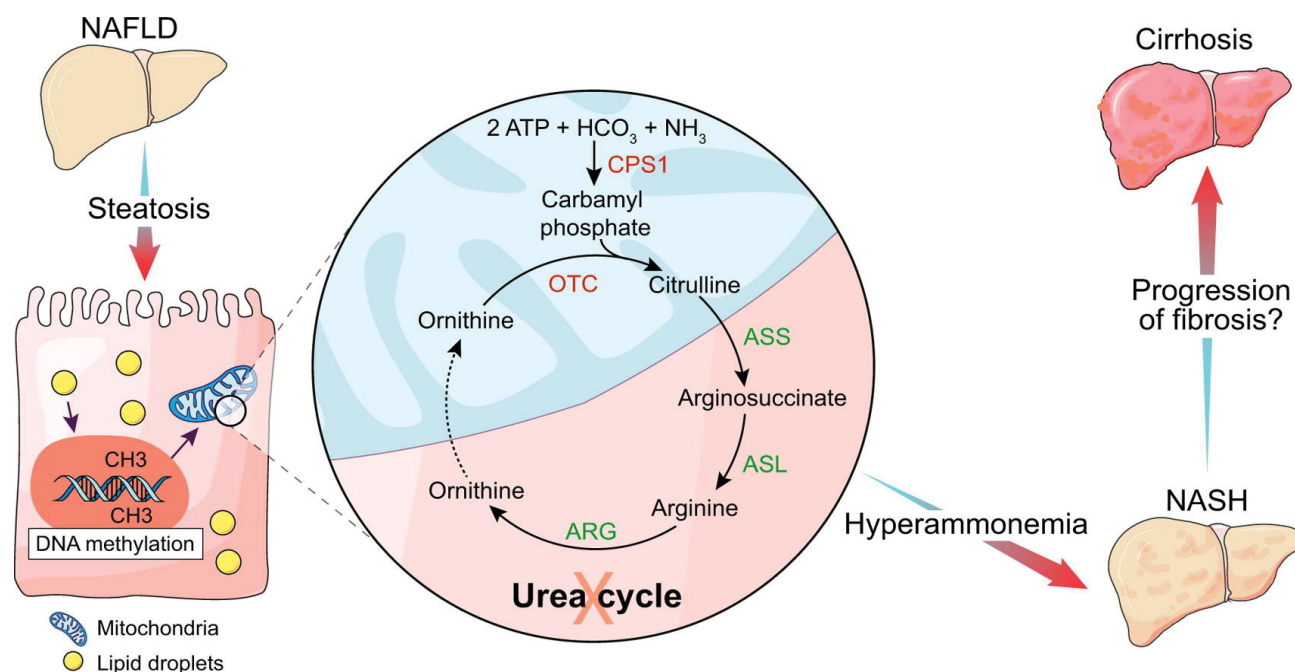


Figure 10: Experimental and human NASH is associated with reduced urea cycle enzyme expression. Hypermethylation of urea cycle enzymes is a potential underlying mechanism. The functional changes of urea synthesis in NASH are associated with hyperammonemia. Hyperammonemia can cause progression of liver injury and fibrosis. Ammonia is a potential novel target for prevention of progression of NASH. Severe disease in COVID-19 patients is prevalent in T2DM and obese ones. They show high azotemia due to Urea. It is important assessment of the seric ammonium facing neurologic phenomena. Source: [116].

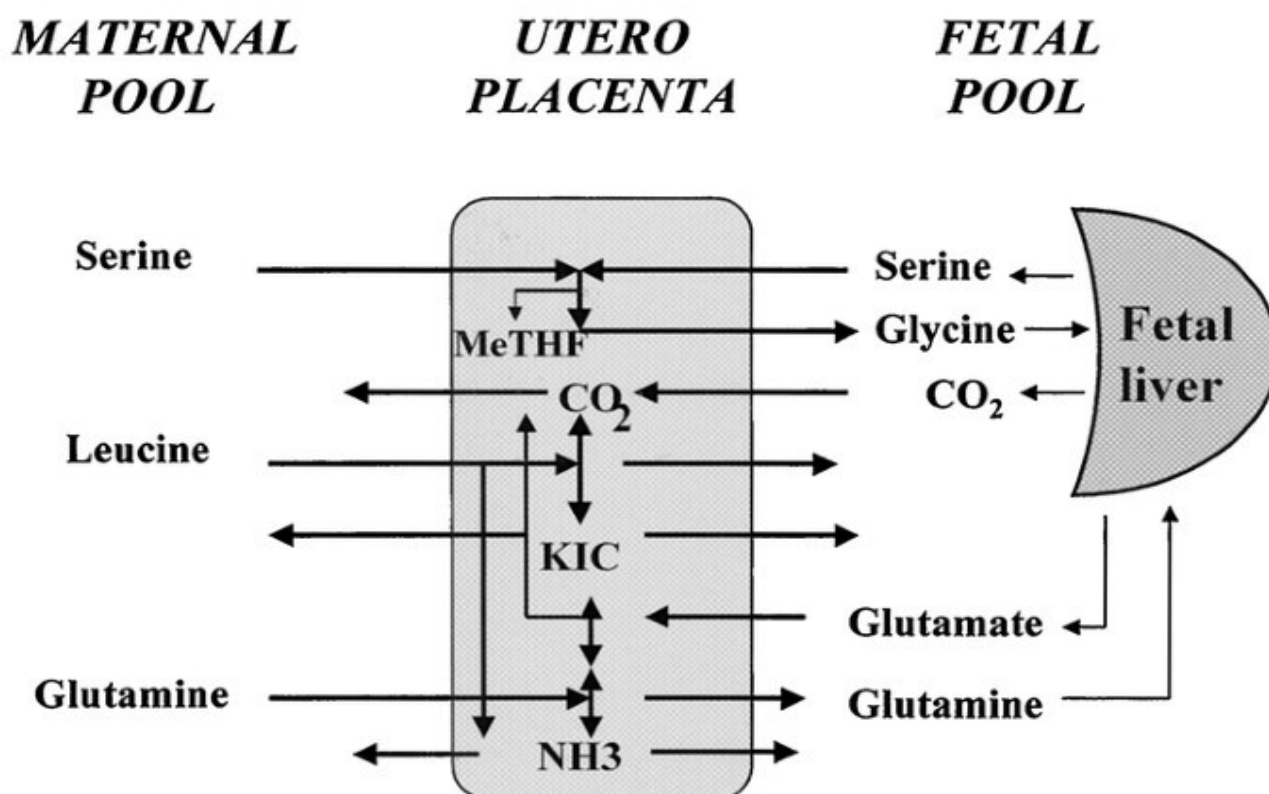


Figure 11: Diagram of amino acid placental exchanges between maternal and fetal plasma pools in chronically catheterized pregnant sheep. Serine is taken up by the placenta from both maternal and fetal circulations: Glycine is produced and released in the fetal circulation, and then taken up by fetal liver and partly converted to serine and CO₂. Glutamine is taken up by the maternal circulation but also produced from glutamate within the placenta, released into the fetal circulation, and significantly converted to glutamate within the fetal liver. Leucine is also taken up by the maternal circulation, deaminated to KIC within the placenta, and then released into the fetal circulation together with KIC. Placental amino acid utilization leads to ammonia production.

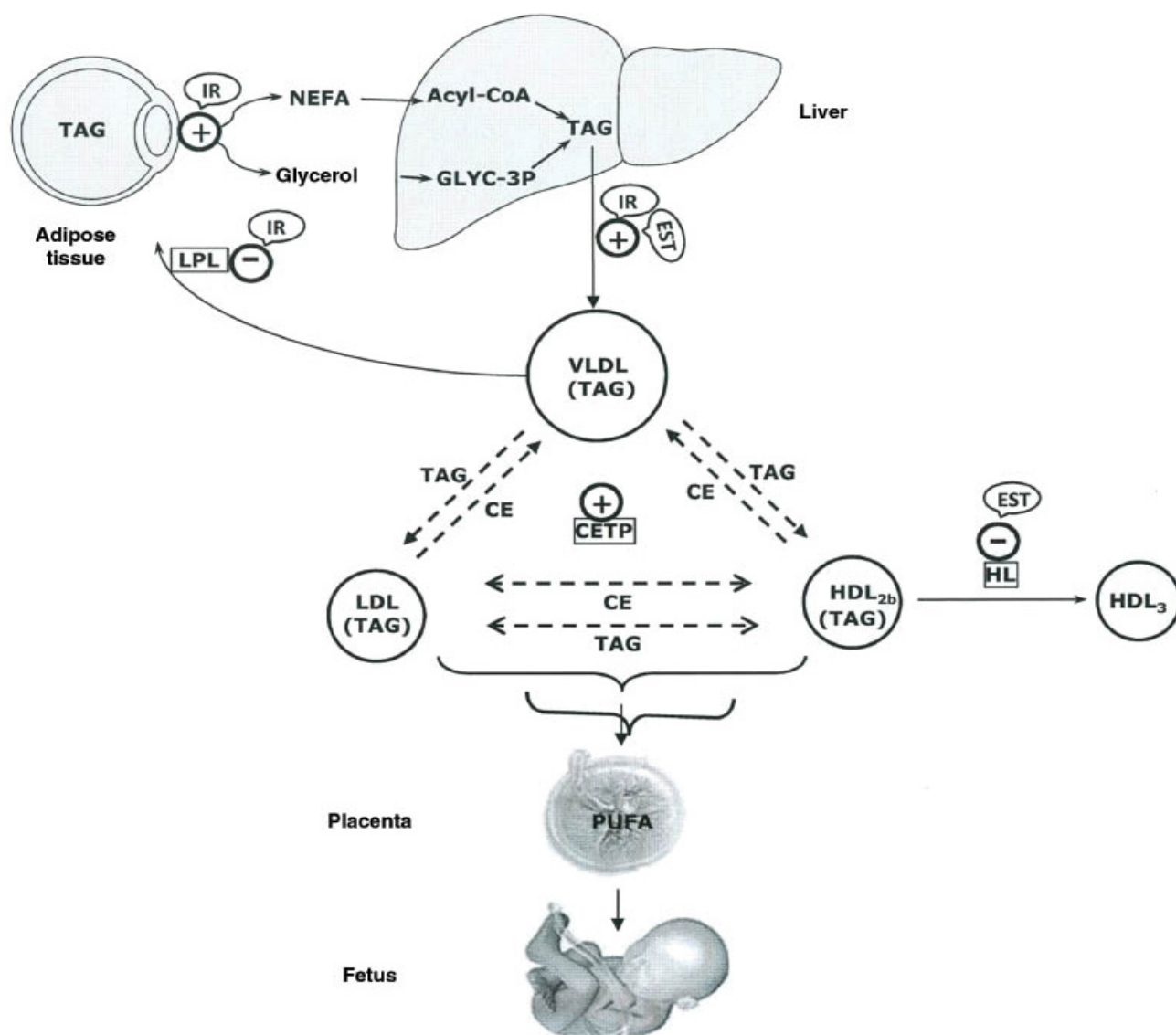
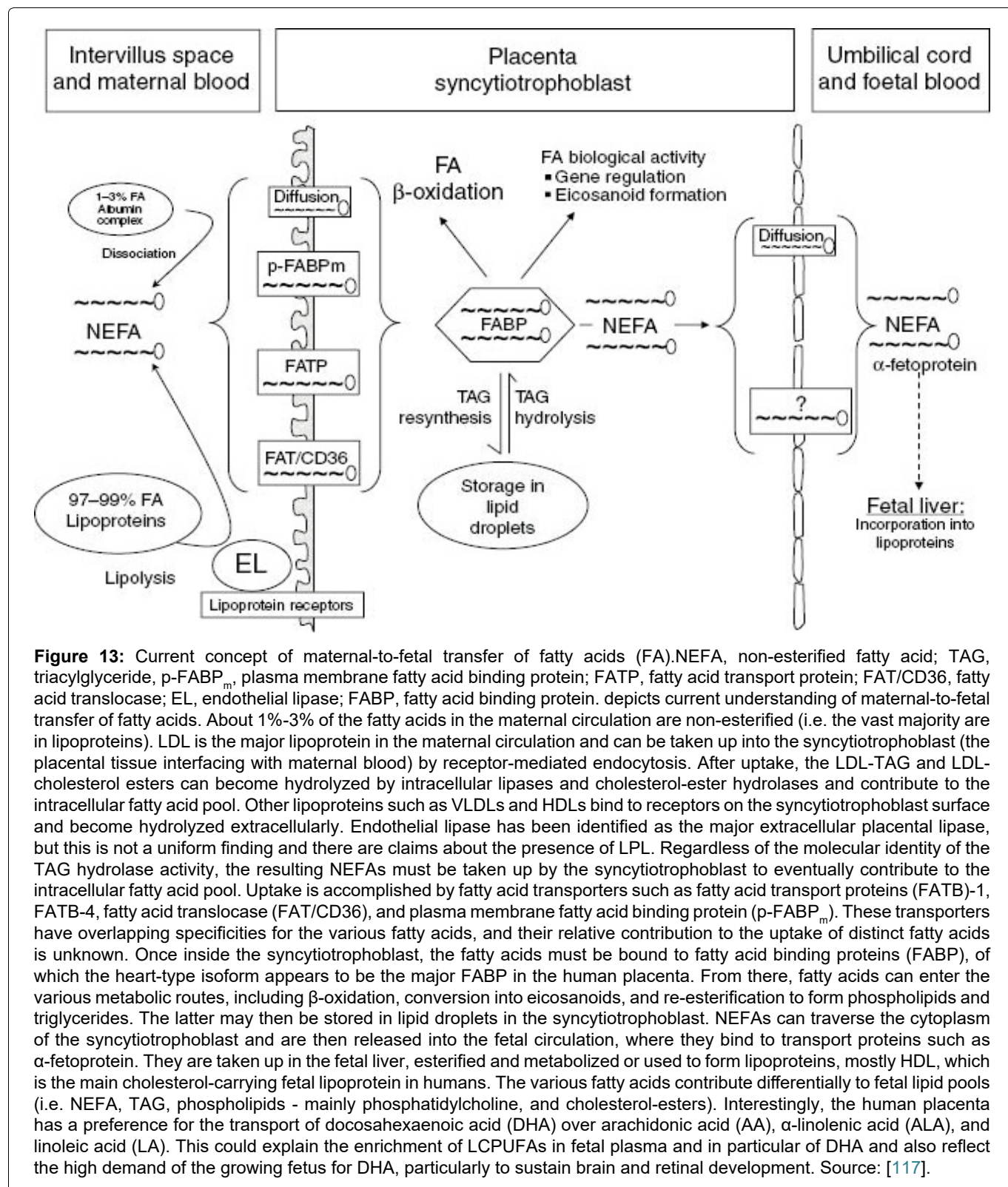


Figure 12: Major lipid metabolic interactions during late pregnancy, showing control by the insulin-resistant condition (IR) and enhanced estrogen levels (EST) in specific steps: +, activated steps; -, inhibited steps; NEFA, non-esterified fatty acid; Glyc-3P, glycerol-3P; TAG, triacylglyceride; CE, cholesterol ester; LPL, lipoprotein lipase; HL, hepatic lipase; PUFA, polyunsaturated fatty acid; CETP, cholesterol ester transfer protein. During late pregnancy, the net catabolic condition of maternal adipose tissue is associated with hyperlipidemia, which mainly corresponds to increases in TAG levels with smaller rises in phospholipids and cholesterol. The greatest increase in plasma TAGs corresponds to VLDLs as result of their increased production by the liver and decreased removal from the circulation as a result of decreased LPL activity in adipose tissue. Plasma lipoproteins of higher density than VLDLs, such as LDLs and HDLs that normally do not carry TAGs, also become enriched in TAGs during late pregnancy as result of an increase in cholesteryl ester transfer protein (CETP) activity and a decrease in hepatic lipase activity. This latter change also seems to be responsible for the proportional accumulation of TAGs in buoyant TAG-rich HDL_{2b} subfractions at the expense of cholesterol-rich and TAG-poor HDL₃. The increase in plasma estrogen levels during pregnancy probably contributes to these changes, because estrogens are known to stimulate hepatic VLDL production in pregnancy and to decrease hepatic lipase activity. It is proposed that the two main hormonal factors responsible for the metabolic interactions that result in the development of maternal hypertriglyceridemia during late pregnancy are the high lipolytic activity and low LPL activity in adipose tissue caused by the insulin-resistant condition and the increased liver secretion of VLDLs and decreased hepatic lipase activity caused by oestrogen. Source: [117].



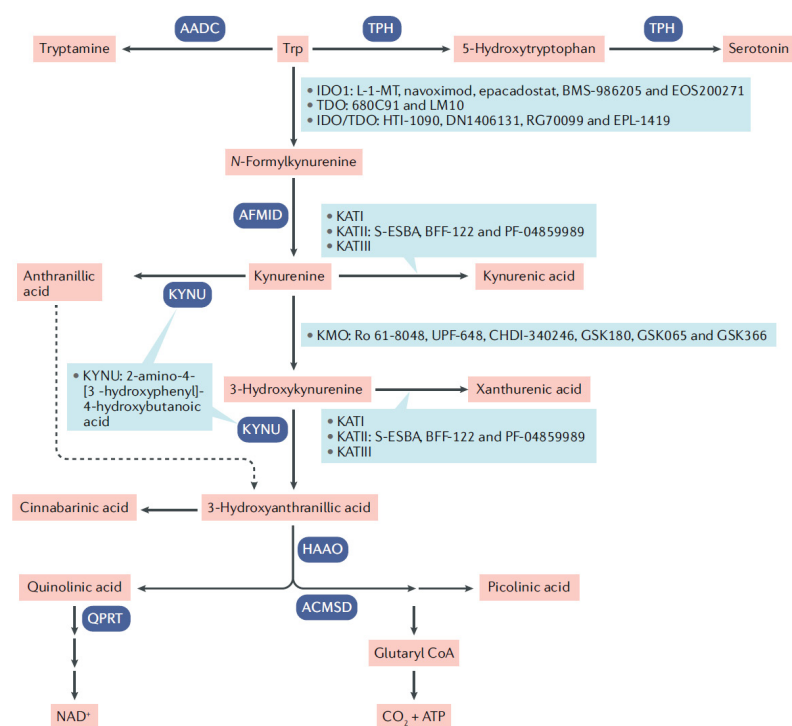
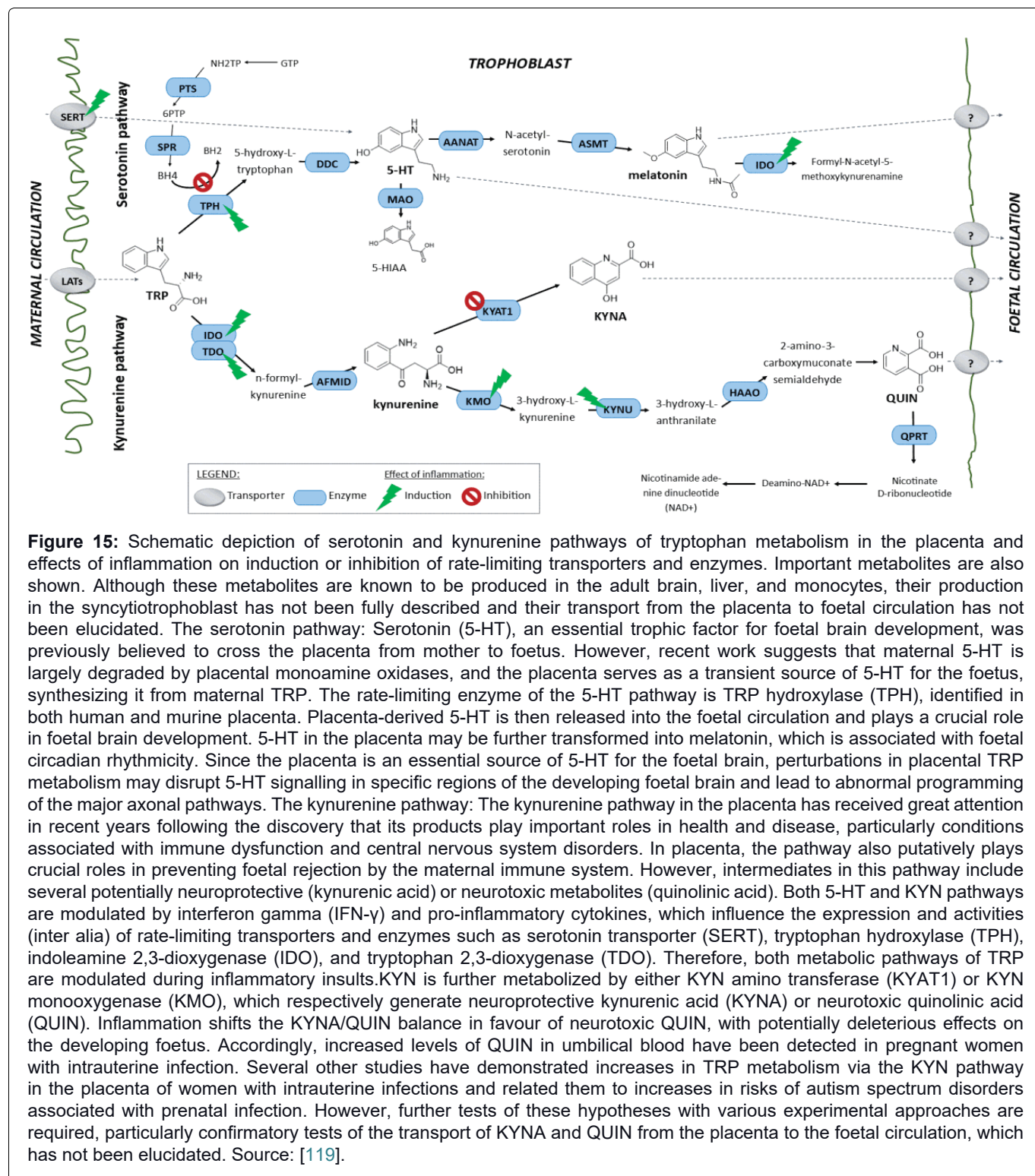


Figure 14: Tryptophan catabolism, key therapeutic targets and drugs in development. A small fraction of free L-tryptophan (Trp) is used for protein synthesis and the production of neurotransmitters such as serotonin and neuromodulators such as tryptamine. However, over 95% of free Trp is a substrate for the kynurenine (Kyn) pathway (KP) of Trp degradation, which generates several metabolites. Drugs in development and their therapeutic targets within the KP are shown in blue boxes. The tissue-specific expression of enzymes in the kynurenine (Kyn) pathway (KP) is best studied for tryptophan-2,3-dioxygenase (TDO) and indoleamine-2,3-dioxygenase 1 (IDO1). In humans, TDO and IDO1 are localized in different cells and tissues and are used in different physiological processes. TDO. The TDO enzyme is expressed in liver, bone marrow, the immune system, muscle, gastrointestinal tract, kidney and urinary bladder and brain²⁵⁸, and expression levels are regulated by systemic levels of L-tryptophan (Trp) and corticosteroids, which change in response to stress or food; for example, in mice, starvation results in a dramatic decrease in TDO expression. In addition, TDO is induced in glioma cells and in neurons by prostaglandins. TDO activity balances the total amount of Trp in the body and is thought to regulate a behavioural response to food availability by initiating the production of bioactive KP metabolites. Such behavioural regulation by the KP has been demonstrated in *Caenorhabditis elegans*, in which the availability of food, as measured by trp, increases the levels of kynurenic acid (Ka). Ka then increases the foraging behaviour via evolutionary conserved neuronal N-methyl-D-aspartate (NMDa) receptors until the trp balance is restored. Fluctuations in levels of KP metabolites in the human brain may similarly regulate behavioural responses, which may be impaired under pathological conditions and lead to behavioural alterations. IDO1. The IDO1 enzyme is expressed in most tissues at low levels, including cells of the central nervous system (CNS) and macrophages, but not in the liver. The expression and activity of IDO1 in the immune compartment is tightly regulated. It is highly expressed in inflamed tissues, with its expression induced (mainly in myeloid cells) by the pro-inflammatory cytokine IFN γ , interleukin-6 (IL-6) and toll-like receptor (TLR) ligands. IDO1 expression can also be induced through interaction with T cells. The immune checkpoint cytotoxic T lymphocyte-associated protein 4 (CTLA4), which is expressed on regulatory T cell (Treg) cells, stimulates IDO1 expression in dendritic cells (DCs) through outside-in signalling of the co-stimulatory molecules CD80 and CD86. This activation is tightly controlled by suppressor of cytokine signalling 3 (SOCS3), which targets IDO1 for proteasomal degradation. Thus, the degradation of IDO1 appears to represent a default programme to ensure full stimulation of an antigen specific T cell response¹⁹⁷. IDO1 is thus an integral part of an immunoregulatory network controlling T cell activation. Here, Treg cells play an important role as both inducers and targets of IDO1-mediated Trp metabolism¹³⁴. IDO1 is also constitutively expressed in the placenta and epididymis, where it has been shown to maintain immune privilege by suppressing T cell responses. Particularly in the lung, elevated levels of IDO1 are thought to prevent the growth of Trp-dependent intracellular pathogens by depleting local Trp. Endothelial IDO1 expression in response to pro-inflammatory stimuli is thought to be involved in the regulation of vascular tone. IDO2. the IDO2 gene is located immediately downstream of the IDO1 gene and is believed to possess a more ancestral function. IDO2 mRNA expression is more restricted than IDO1; it is constitutively expressed in human liver, brain, thyroid, placenta, endometrium and testis but can be induced in antigen-presenting cells (APCs) and B cells¹⁴. IDO2 expression is regulated in APCs and B cells by Kyn binding to the aryl hydrocarbon receptor (AHR). This observation suggests that IDO2 may be part of a cellular restricted feed forward loop of Trp metabolism induced by IDO1. Downstream enzymes. The other enzymes in the KP have been mostly studied in the CNS. Kynurenine monooxygenase (KMO) and kynurenine aminotransferases (KATI-KATIII) are expressed in the brain and induced in several pathological conditions, including traumatic injury²⁶⁷, viral infection²⁶⁸ and neurodegeneration². L-1-MT, 1-methyl-L-Trp; AADC, aromatic-L-amino acid decarboxylase; ACMSD, α -amino- β -carboxymuconate- ϵ -semialdehyde decarboxylase; AFMID, kynurenine formamidase; HAAO, 3-hydroxyanthranilate 3,4-dioxygenase; IDO, indoleamine-2,3-dioxygenase; KATs, kynurenine amino transferases I-III; KMO, kynurenine 3-monooxygenase; KYNU, kynureninase; QPRT, quinolinic acid phosphoribosyl transferase; TDO, tryptophan-2,3-dioxygenase; TPH, tryptophan hydroxylase. Source: [118].



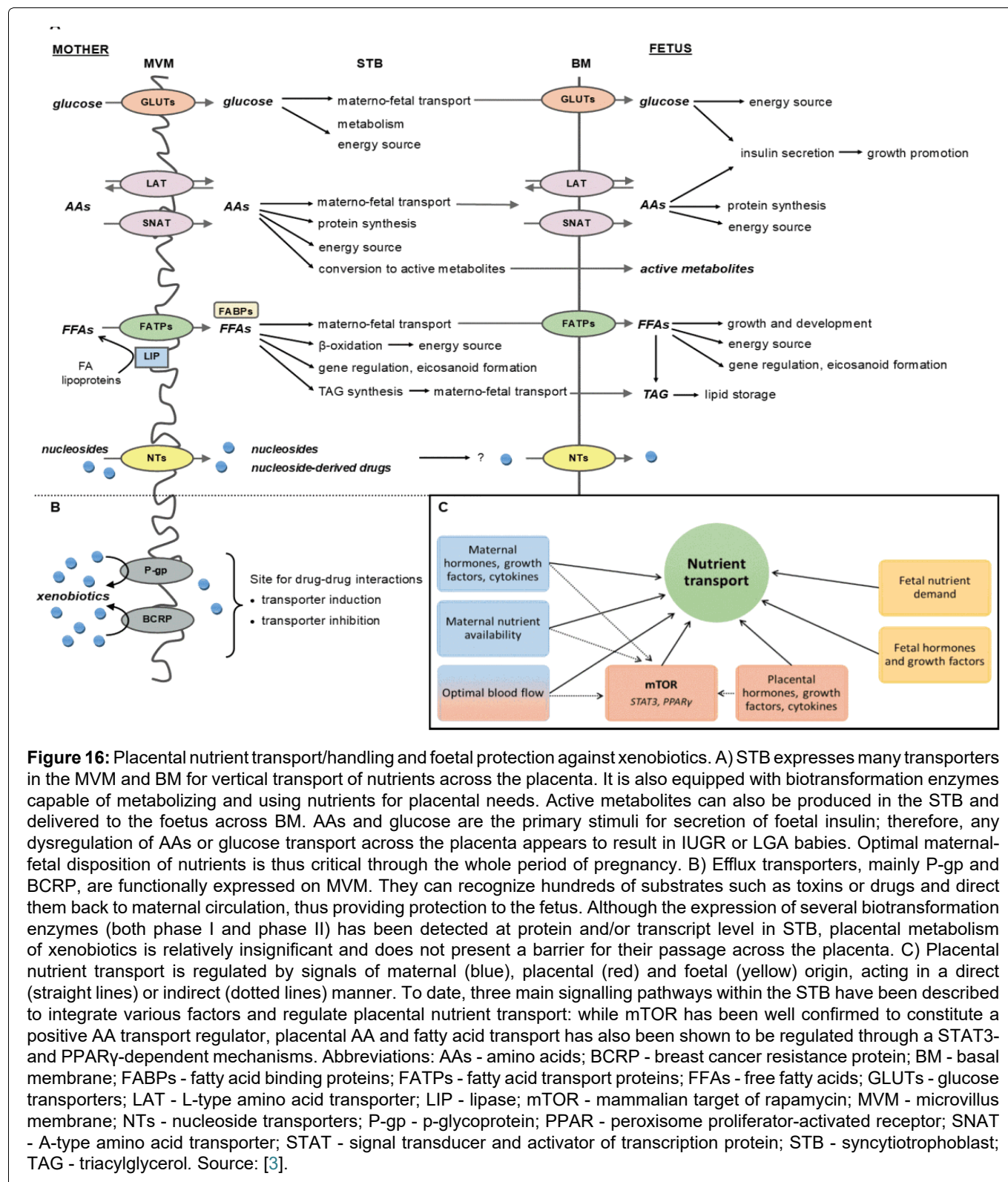
switch to IDO-1, the Kynurenine pathway is prioritised (Figure 14, Figure 15, Figure 16 and Figure 17).

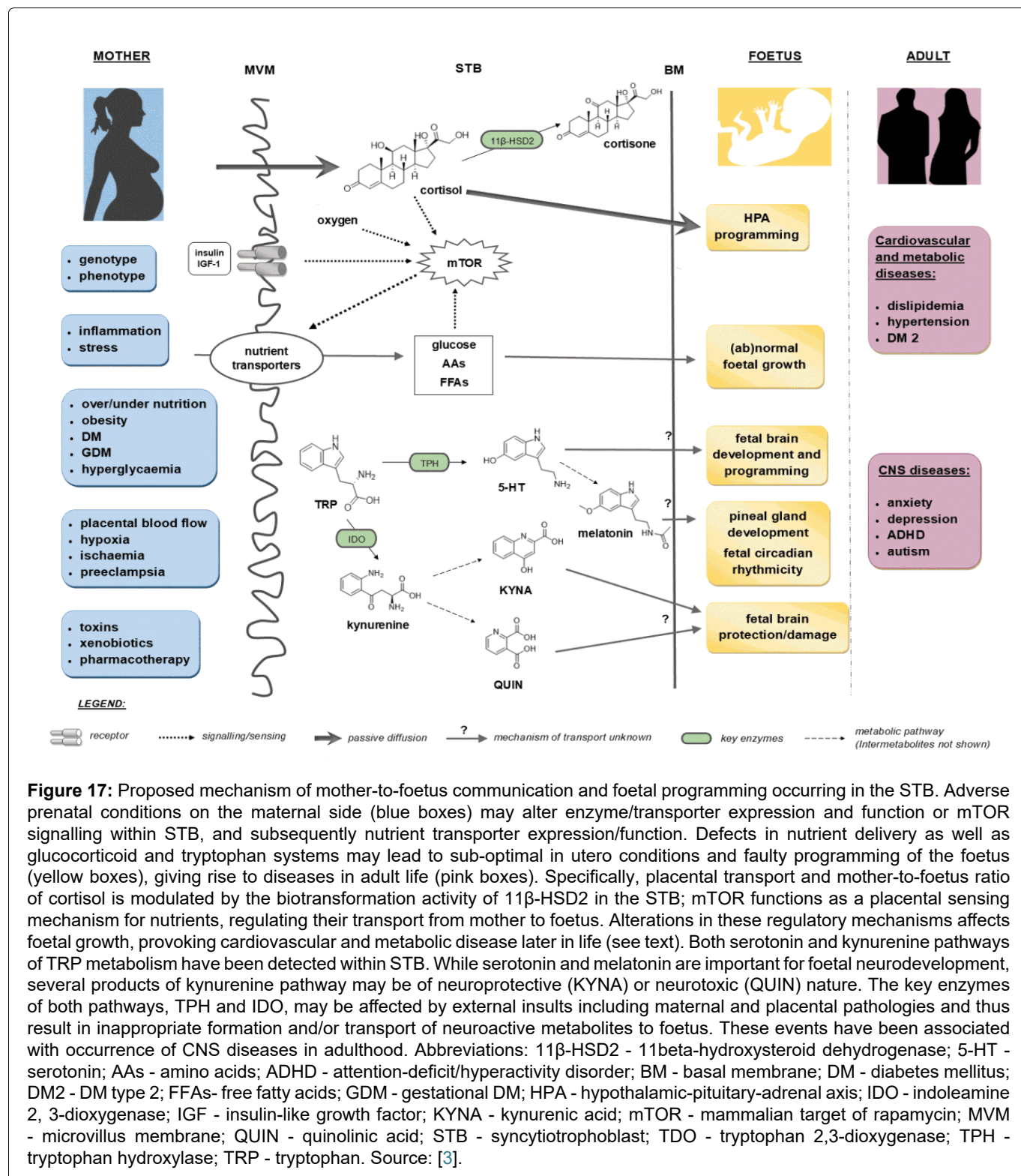
Kynurenine has an immunosuppressive [83-85] role by acting on AhR receptors, promoting a tendency for lymphocytes to differentiate into Treg. Cathepsins and Furins also induce the tolerance pathway as well as promote apoptosis of lymphocytes. These facts explain much of what we see in patients who exhibit intense lymphopenia associated with the severity of hypoxia (Figure 18 and Figure 19).

Phe is a substrate for the formation of catecholamines; when Phe is in deficit, the chronic stress of COVID-19

can deplete catecholamine reserves and justify the difficulty in suspending the intravenous administration of norepinephrine in patients.

The production of Kynurenine and IDO-1 is altered so that in the first trimester, there is a tendency towards the formation of 5-HT involved in fetal development and blood vessels. By the action of IDO-1, the Trp metabolism tends towards the KYN pathway, generating both protective and toxic metabolites to the Central Nervous System. During inflammatory processes, the preference for the KYN pathway is orchestrated to decrease inflammation, as KYN binds to AhR receptors,





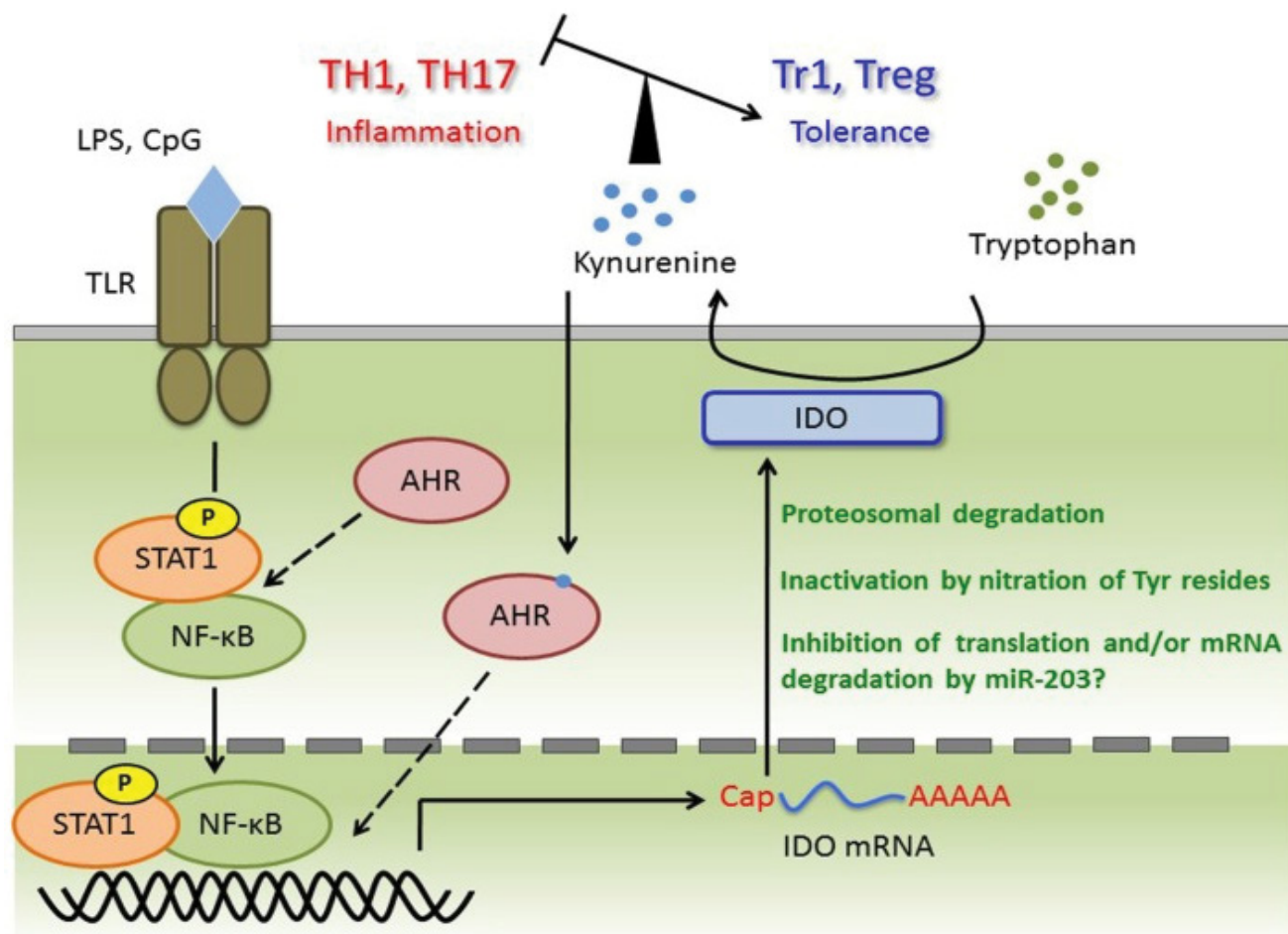


Figure 18: TLR ligands trigger transcriptional activation of STAT-1 and NF-κB and then induce IDO mRNA. Although AhR forms complex with STAT-1 and NF-κB in macrophages under pro-inflammatory cytokines production, this complex appears in DC or required for IDO expression is not known. Induced IDO mRNA may be controlled by miR-203 (not investigated), and the activity or amount of IDO protein is regulated at post-translational modification, such as nitration of Tyr and ubiquitin ligation. Kynurenine catalysed by IDO induces tolerances via regulating TH1, TH17, Tr1, and Treg balance. Kynurenine may activate the AhR for IDO induction in an autocrine manner and form AHR/Kynurenine positive-feedback loop. Source: [78].

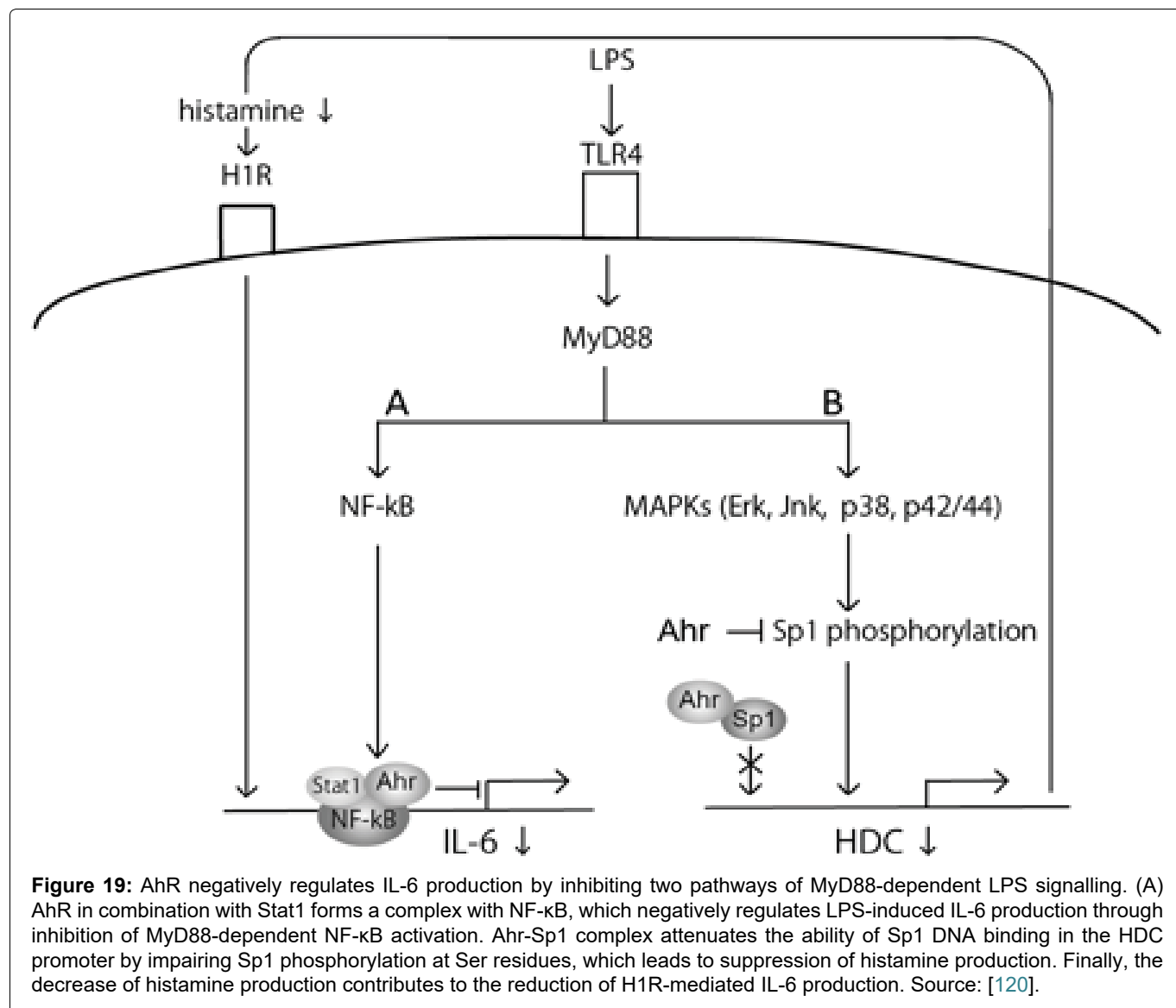
down-regulating IL-6 production by inhibiting two MyD88-dependent LPS signalling pathways (Figure 19 and Figure 20) [86-88].

As pregnancy progresses, the placenta loses its immunosuppressive strength and perhaps the increase in oxygen tension is an explanation for this phenomenon since hypoxia makes the environment more tolerant. Furthermore, the ageing process of the placenta tends to a natural increase in oxidative stress indicating that the pathways that activate inflammation are gradually increased as the placenta ages. Thus, in the third trimester and after 34 weeks, the pregnant woman is more symptomatic when the SARS-CoV-2 infection occurs during this period [88,89].

There are many cases of acute COVID-19 that start with psychiatric manifestations, especially depression. The deficit of 5-HT and dopamine can explain these changes due to low intestinal absorption, which can have repercussions in more intense puerperal melancholia [87,90,91].

Added to the 5-HT and dopamine deficits, cell damage due to intense hypoxia generates Adenosine as a product whose function is initially cellular protection, acting in an immunosuppressive way.

Hypoxia induces ATP release via ATP-binding cassette (ABC) transporters, pannexin 1 or connexins. Accumulated ATP can stimulate purinergic P2 receptors (P2XRs and P2YRs) or be further degraded to Adenosine by the sequential action of CD39 and CD73 ectonucleotidases. In situations of great metabolic stress, in this case, the magnitude of hypoxia produced in SARS-CoV-2 infection in a cellular medium depleted of NAD/NADH+ [58,92-94], requiring tissue lysis to guarantee amino acids for gluconeogenesis, Adenosine is produced in large quantities. It may reflect metabolic exhaustion in the face of cell damage. This article theorises that Adenosine [95-97] promotes bradycardia even in a febrile state, a fact known as the Faget's Sign (Figure 21 and Appendix). This phenomenon is also a known sign of other illnesses, for example, yellow fever. The tendency towards bradycardia is related to



tissue hypoxia with implications for aerobic metabolism [98-101]. An electrocardiogram must be performed whenever a pregnant woman (or any patient) is admitted to the hospital. A baseline comparison is necessary to have a better assessment of the possible causes of bradycardia. Another essential role of Adenosine is to cause peripheral vasodilation, adding points for refractory shock COVID-19.

This article shows that exposure to hypoxia is linked to the magnitude of the patients' phenomena since cell responses tend towards tolerance. Patients with predictors of severity (T2DM, obese, elderly, heart diseases) gets immunosuppressed by SARS-CoV-2 and can rapidly induce tumour growth due to apoptosis of all lineages of lymphocytes. The activation of latent diseases of any infectious etiologies [102-104], which can, in pregnant women, cause secondary damage to the foetus, is a fact. Publications showing activation of the virus of the *Herpesviridae* family [105-107] in the face of lymphopenia in COVID-19 has not been rare [108-110]. Considering the role of neutrophils and the formation of immune complexes in COVID-19, tolerance also allows for autoimmune diseases.

In pregnant women, the placenta acts as a buffer by immunosuppressing the pregnant woman, preventing her from progressing to an inflammatory phase with intense symptoms. At the same time, pregnant women with T2DM and obesity are more symptomatic because they present placental changes that prevent them from performing adequate immunosuppression.

Soon after placental separation, postpartum women rapidly progress to respiratory failure (depending on comorbidities and the extent of pulmonary involvement). This phenomenon may occur because, without the placenta, the postpartum woman's homeostasis returns to the basal level. Inflammation occurs quickly and generates the cytokine storm that drives them to Acute Respiratory Distress Syndrome (ARDS). For this reason, it is necessary to perform a chest tomography immediately after placental separation (see guide in the Appendix).

Due to COVID-19 has a viral phase and another one almost (most cases) inflammatory exclusively, immunosuppression by the placenta is the natural treatment against cytokine storm.

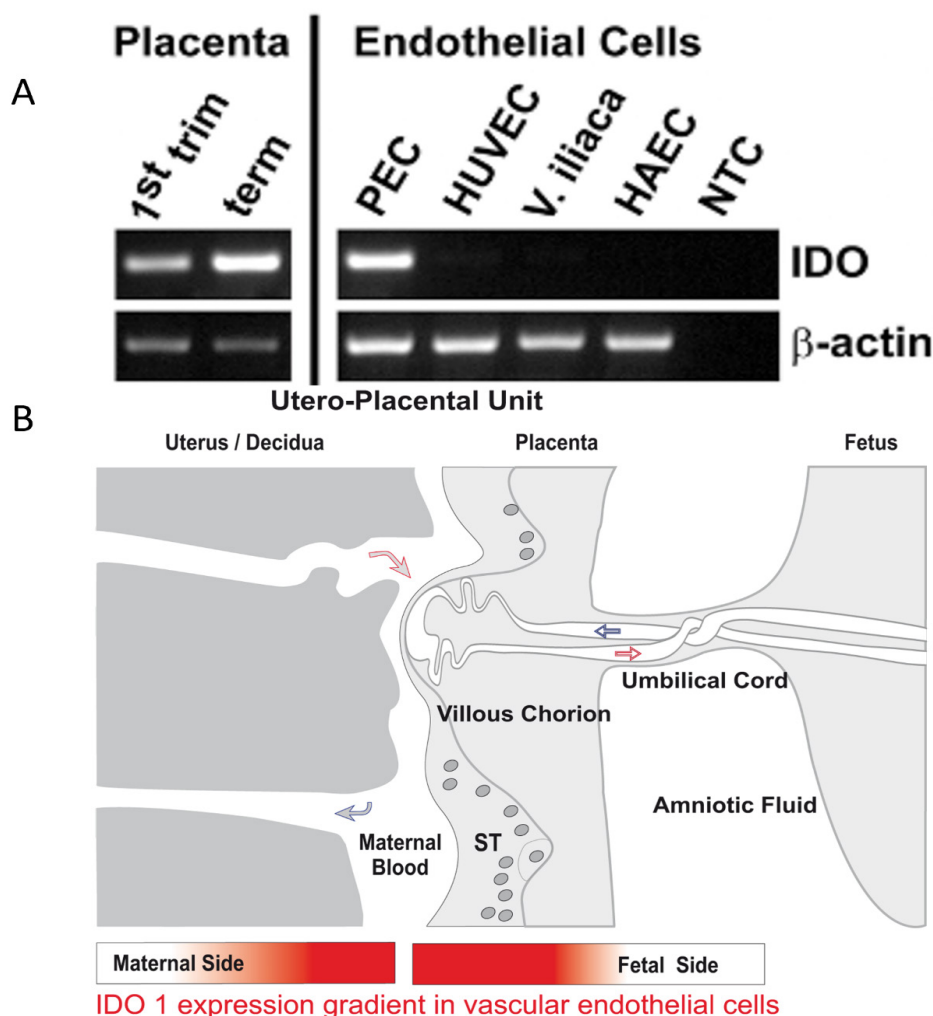


Figure 20: A. Semi-quantitative RT-PCR comparing IDO1 mRNA expression in first trimester and term placenta tissues with endothelial cells isolated from term placenta chorionic plate (PEC), a human umbilical vein endothelial cell line (HUVEC), endothelial cells isolated from the iliac vein (*V. iliaca*) and a cell line from human aortic endothelium (HAEC). The expression of beta-actin was used as internal reference and water instead of total RNA served as non template control (NTC). The upregulation of IDO1 is confirmed from first trimester to term placenta by measuring the levels of tryptophan and kynurenine and the Kyn/trp ratio in lysed tissues. In parallel to immunohistochemical and RT-PCR results, tryptophan concentration measured in the tissue decreased ($p < 0.001$) from first trimester villi ($57.4 \pm 31.13 \mu\text{mol/mg}$, mean + standard deviation) to term villi ($7.2 \pm 8.14 \mu\text{mol/mg}$), the concentration of kynurenine increased ($p < 0.001$) from first trimester ($5.3 \pm 8.94 \mu\text{mol/mg}$) to term villi ($38.0 \pm 11.97 \mu\text{mol/mg}$). So the mean kynurenine/tryptophan ratio, allowing for an estimation of antecedent IDO activity of placental tissue increases about thousand-fold ($p < 0.001$) from first trimester (0.076 ± 0.072) to term placenta (74.419 ± 126.291). B. Illustration of the IDO1 expression gradient in vascular endothelial cells of fetal and maternal blood circulations at the utero-placental maternofoetal interface. Source: [121].

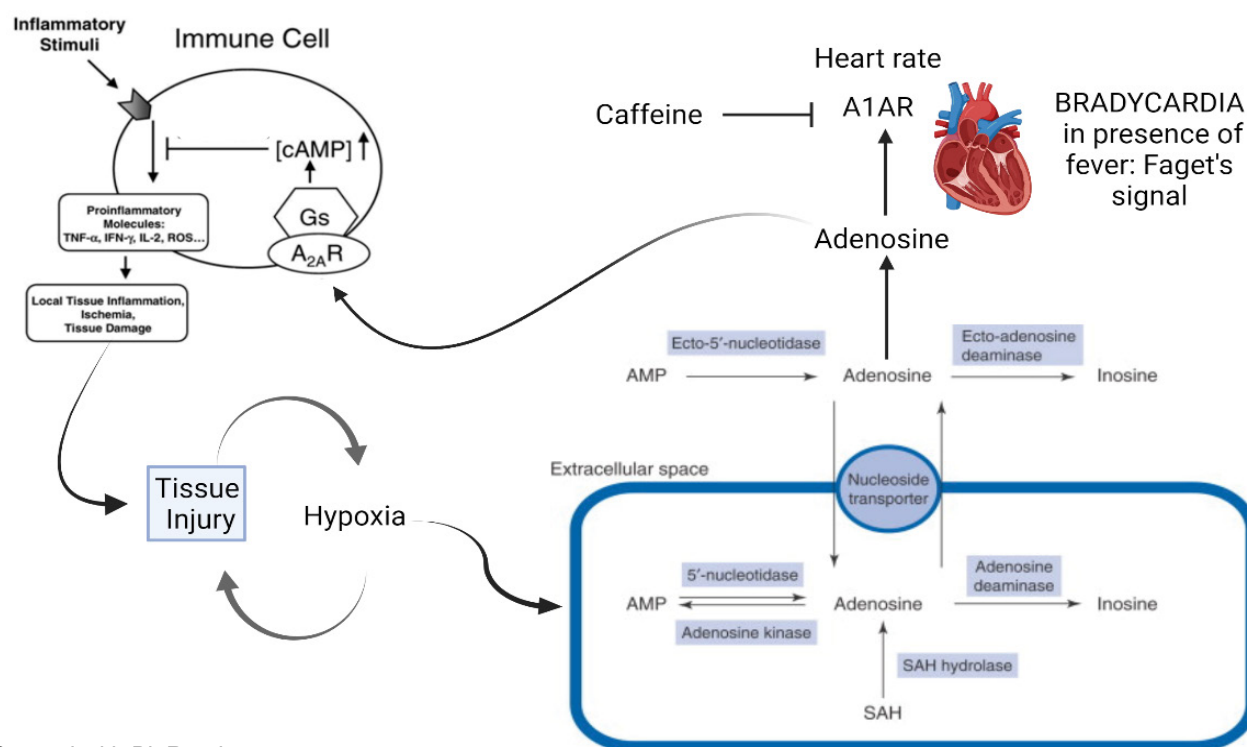
T2DM or obese patients have a high chance of progressing to severe or critical forms of COVID-19, as they already have a comorbidity profile that stimulates inflammation. Even in early pregnancy, pregnant women with diabetes or obesity will be more symptomatic, as the metabolic pathways of the placenta are already altered, tending to premature ageing and more significant oxidative stress (Figure 22).

The placenta acts as a buffer against SARS-CoV-2 infection: 1) Immunosuppression prevents the pregnant woman from presenting symptoms resulting from an inflammatory storm, 2) The placenta is initially supported in an oxygen-poor environment, and its energy metabolism prioritises via an anaerobic route, a fact that can mitigate the effects of hypoxia caused by SARS-CoV-2, 3) The materno-foetal interface is a

syncytium, a site that can be tropic for the coronavirus since this environment has high expression of cathepsins and furins; however, it is the place where maternal macrophages and neutrophils are stimulated to contain the infection. In this case, syncytium would have a protective role against SARS-CoV-2 infection, functioning as a trap.

Final Considerations

Given the pandemic and, in the case of something that I had never seen before, a virus for which we do not have adequate treatment, the only solution was to study the virus-host relationships to establish better medical practices on an understanding of the pathophysiology involved in infection.



Created with BioRender.com

Figure 21: Faget's sign. Faget's sign is bradycardia concerning fever when the usual thing is tachycardia due to temperature elevations. It so happens that the pathophysiology behind this phenomenon is still controversial. Given the studies in COVID-19, the possibility arises that this phenomenon is related to the production of Adenosine (ADA) in the face of severe hypoxia that occurs in SARS-CoV-2 infection. Adenosine plays an essential role against cell damage, has an anti-inflammatory/immunosuppressive role in addition to causing psychiatric phenomena that are very prevalent in COVID-19. However, this adaptation to cellular damage can become a sign of physical and metabolic exhaustion in the face of such intense inflammation resulting in Bradycardia with a risk of cardiorespiratory arrest due to the amount of serum adenosine and hypoxemia resulting from COVID-19. This situation also appears in other diseases that progress with severity and tissue hypoxia due to disseminated intravascular coagulation, causing cell damage due to lack of tissue oxygen.

I am aware that all of these are hypotheses, but hypotheses based on observation of almost two years dealing with the clinical management of COVID-19 patients. I am fully convinced that tomorrow all this can change, as we are talking about science. The important thing is that we are not static in the face of the new. Our knowledge is limited, and we need to expand it to understand acute SARS-CoV-2 infection and the consequences of chronic inflammation that has a terrible impact on people's quality of life, a situation called "Long COVID-19". So far, the main approaches have a more palliative than curative bias. We are acting on the symptoms and not on the essence that causes the presented clinical phenomena. With that, we have a polymedication that often causes more problems in the patient's life than benefits.

Understanding the disease is the best way to know how to treat it.

Acknowledgments

-To Syomara Regina de Almeida, an Obstetrician with whom I have the pleasure of sharing plenty of doubts facing the pregnant women that Syomara trusted me to follow-up considering each patient as unique in their individualities. I had the obligation (with a grateful

satisfaction) of studying deeply each pregnant woman to find options to offer facing the real life, considering my professional and human ethics.

-To Maria Luiza Benício. An Obstetrician and a friend of mine who believed in my opinion when I explained by phone, what I was thinking about COVID-19 and pregnancy relationship. It happened about 1 year ago.

-To All patients that allow me to grow up as a human being, as a physician, as a researcher. All this work has been developed to offer better choices when no other option has already been available.

-To the hospital do servidor público (public servants) in the state of São Paulo (HSPE). My eternal gratitude.

-To my friends, parents and family who supported me to continue, even in the face of storms: Be they cytokine storms or human storms.

-And to Andrea Lúcia Silva Ladeira de Almeida, clinical manager of the HSPE, for understanding that these studies have value not only for me, who grows with the doubts and with the search for solutions in the face of doubts, but that the most significant value is the outcome we can achieve for the COVID-19 patients when we understand that SARS-CoV-2 does not behave like a known virus.

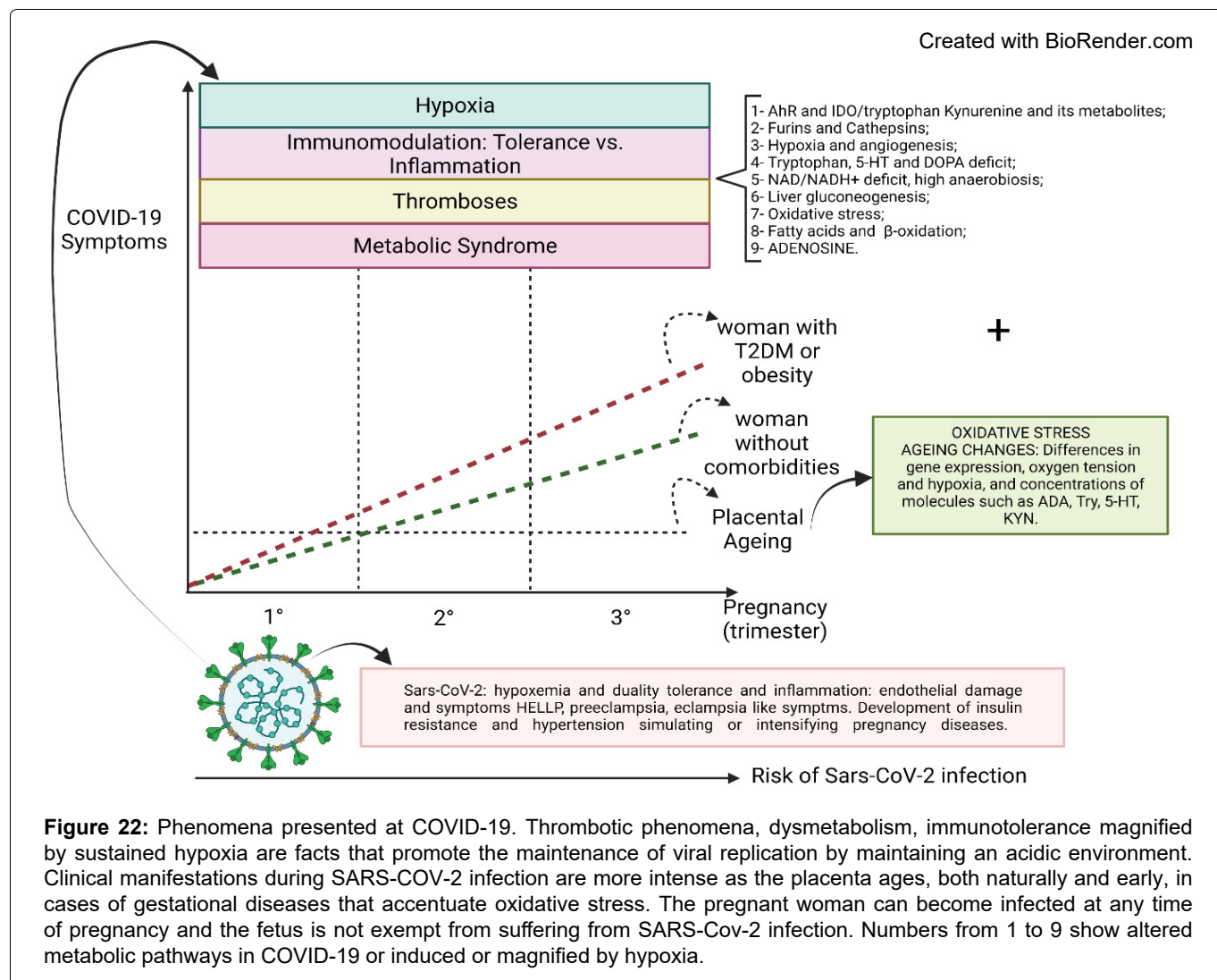


Figure 22: Phenomena presented at COVID-19. Thrombotic phenomena, dysmetabolism, immunotolerance magnified by sustained hypoxia are facts that promote the maintenance of viral replication by maintaining an acidic environment. Clinical manifestations during SARS-COV-2 infection are more intense as the placenta ages, both naturally and early, in cases of gestational diseases that accentuate oxidative stress. The pregnant woman can become infected at any time of pregnancy and the fetus is not exempt from suffering from SARS-Cov-2 infection. Numbers from 1 to 9 show altered metabolic pathways in COVID-19 or induced or magnified by hypoxia.

Author Contributions

Luiz Zanella: I wrote this article based on my nearly two years of clinical experience and studies focused on the management of the patient COVID-19. The experience and existing doubts in the management of pregnant patients originated both from consultations carried out at the HSPE and from outpatients for which I was appointed a specialist in infectious diseases to perform care in conjunction with the Obstetricians.

Miriane Marques: My friend and an Obstetrician who helped me searching for articles about pregnant women's pathophysiology.

Consent to Publish

This work does not require authorization and there is no identification of patients. There was no need for a consent form to this review according to the National Ethics Committee.

Availability of Data and Materials

All data are available in the electronic medical record system of Hospital do Servidor Estadual (Sao Paulo-Brazil) and in the authors' research files.

Conflict of Interest

The authors report on conflict of interest.

Luiz Gonzaga Francisco de Assis 'Barros D'Elia Zanella is a physician specialised in Infectious Diseases. I work fully in Public Health (SUS-Sistema Único de Saúde) in Brazil, providing private care in my own clinic. Also, I conduct clinical research at the "Hospital do Servidor Público do Estado de São Paulo (HSPE)". I have been dealing with COVID-19 patients in COVID-19 wards, Intensive Care Units, and I work with the training of medical residents. I have no conflicts of interest and I do not have founds that.

Miriane Marques Borges is a Gynecologist and Obstetrician. She provides private care and to the Public Health System. She does not receive any funding that conflicts with the article's proposal.

Financial Support for the Research

This article did not receive funding from any kind of sources to be written.

Key Points

The recent publication by Nóbrega-Cruz, et al. [74], favouring the idea that COVID-19 needs a different

understanding of its pathophysiology, addresses the molecular relationships that lead pregnant women to be more symptomatic in the final stages of pregnancy. Adding to the ideas proposed in Nóbrega-Cruz, et al. this article shows changes in metabolic pathways by the action of SARS-CoV-2. Changes related to ACE-2 internalization associated with the cellular injury caused by SARS-CoV-2 triggering intense hypoxia indicate that the pathophysiology of COVID-19 needs reconsiderations every moment. COVID-19 is a new disease, and hypoxia has differences that make it something serious, whose management requires a different view concerning other diseases that course with respiratory severity. Together, the two articles highlight the need for clinical approaches to be modified for all COVID-19 patients. However, this article focuses on pregnant and postpartum women.

It is important to emphasize that the conduct of pregnant and postpartum women is necessarily Obstetric, a speciality focused on improvements in this area. My role, as an Infectious Diseases specialist, is to expose situations where I was involved by jointly conducting obstetric cases, which supplied me moments of learning and study.

It is essential to consider that pregnant and postpartum women need improvement in Clinical, Obstetrical, and Intensive Care management, which a joint inter-clinical specialties discussion is essential, adding ideas and knowledge facing a new disease makes possible to achieve better and targeted approaches for each patient.

From the contact with specialists in obstetrics, conducting patients at the Hospital do Servidor Público do Estado de São Paulo (HSPE), where I work as an Infectious disease specialist/emergency physician and intensive care physician helping in the care in COVID-19, I expose the result after studies triggered by the necessity of better management of COVID-19 pregnant women.

Due to this confidence in joint management, I nurtured an essential desire for a study to improve conduct based on understanding the virus-pregnant woman relationship.

The following key points summarize what I consider essential given the conditions that make the placenta the exceptional protection for pregnancy to come close to term (about 280 days or 40 weeks) during SARS-CoV-2 infection.

1. The placenta is an organ that provides the woman with immunosuppression due to vasculogenesis, which tends the microenvironment to tolerance so that the embryo is not recognised as not proper by the maternal immune system ([Figure 1](#), [Figure 2](#), [Figure 3](#), [Figure 4](#) and [Appendix](#)).
2. The tolerant microenvironment occurred by the action of cytokines that act systemically, providing the pregnant woman with a status of physiological immunosuppression. However, SARS-CoV-2 infection has handled saving women from symptoms in the early stages of pregnancy (until the end of the second trimester).
3. When the placenta is still a highly active organ, from the third trimester onwards, the placenta shows more intense and rapid ageing, the mechanisms that maintain immunosuppression are less and less intense, allowing the standard tools of inflammation to come back. The pregnant woman becomes more symptomatic in diseases that progress with inflammatory processes such as COVID-19. For this reason, the placenta is an organ that protects the pregnant woman during COVID-19, allowing a normal pregnancy when thrombosis in placental vessels does not occur during SARS-CoV-2 infection in the first trimester of pregnancy.
4. The placenta allows the woman to be a safe environment for the embryo and foetus, but the woman is more symptomatic in the third trimester and manifests symptoms linked to endothelial damage by SARS-CoV-2.
5. Symptoms related to endothelial damage caused by the coronavirus simulate classic diseases of pregnant women such as HELLP syndrome, preeclampsia, and eclampsia. The internalization of ACE-2 by the virus causes an increase in systemic blood pressure, simulating Gestational Diabetes mellitus (GDM). At the same time, the general metabolism has a hyperglycaemic environment, affecting GDM, in oxidative stress ([Figure 1](#), [Figure 2](#) and [Figure 3](#)) and aldosterone elevation. Placenta has mechanisms that can compensate the oxidative stress under normal hypoxia ([Figure 8](#), [Figure 9](#), [Figure 10](#), [Figure 11](#), [Figure 12](#), [Figure 13](#) and [Figure 18](#)) via The Warburg effect ([Appendix](#)).
6. Deficient tryptophan can generate significant symptoms of puerperal blues. Try replacement associated with Bupropion or Citalopram can bring good results to be studied in clinical protocols of specific and necessary clinical studies. So far, I only present hypotheses and experiences ([Figure 2](#) and [Figure 3](#)).
7. The placenta produces tryptophan, an amino acid deficient in patients with SARS-CoV-2 infection of the gastrointestinal system, as ACE-2 absorbs it in enterocytes. Phenylalanine is also absorbed by ACE-2 in the intestines and becomes deficient in COVID-19. The lack of tryptophan promotes a more tolerant environment due to

immunosuppression by lymphocyte apoptosis (via caspase, CD4+, CD8+, NK and B cells). Some latent infections can be reactivated due to lymphopenia, such as Herpes zoster, other viral diseases, in addition to mycobacteriosis, fungal diseases.

8. Lack of tryptophan (Try) and phenylalanine (Phe) has caused acute psychiatric symptoms and catecholamine deficiency.
9. The lack of vitamin B3 due to the shift to Kynurenine (via IDO1) promotes deficient cellular respiration, generating hypoxemia and adenosine in response to this environment of cellular aggression. However, all this pathophysiology is alleviated in pregnant women with the intraplacental production of Try and a hypoxemic buffering (Figure 5, Figure 6, Figure 7, Figure 8, Figure 13, Figure 14, Figure 15, Figure 16, Figure 17, Figure 18 and Figure 19).
10. When it is necessary to induce the delivery due to signs and symptoms of gestational diseases mimicked by SARS-CoV-2, the woman loses the organ that supported her as a marvellous shield to the foetus. There is, at this time, a considerable acute hormonal variation, in addition to the temporary organ loss that allows an infection in the third trimester to be sustained until the symptoms of gestational diseases reach the criteria for resolution of childbirth.
11. With the loss of the placenta, the woman progressively becomes symptomatic, and, in about 10 to 12 hours after the delivery, she can progress to respiratory failure with orotracheal intubation (in cases where infection occurred near this period).
12. Symptoms related to endothelial damage caused by the coronavirus mimic classical diseases of pregnant women such as HELLP syndrome, preeclampsia, and eclampsia. ACE-2 internalization by the virus causes an increase in systemic blood pressure, simulating GHD, and metabolic syndrome.
13. Furins and Cathepsins are present in large quantities in syncytiotrophoblast and act in the process of placental implantation (Figure 5). Usually, the expressions of these proteins are related to hypoxia in the environment. Thus, the hypoxia developed in COVID-19 can promote important changes in the invasive waves of the placenta, impacting the development of diseased pregnancies and foetal/embryo death. Perhaps the high expression of furins and cathepsins contribute to the process of "symptom buffering" of COVID-19 in pregnant women, associated with the fact that the placenta can meet metabolic needs due to the lack of tryptophan.
14. The uteroplacental location of Ang-(1-7) and ACE2 in pregnancy suggests an autocrine function of Ang-(1-7) in the vasoactive regulation that characterizes placentation and established pregnancy. ACE2 at the maternal-foetal interface a prerequisite for transplacental transmission. Strong and diffuse membranous staining of cytotrophoblast and syncytiotrophoblast (ST) cells of placental villi, as well as a membranous expression in extra villous trophoblast. ACE2 expression was detected in villous stroma, Hofbauer cells, or endothelial cells. TMPRSS2 expression was only present weakly in the villous endothelium and rarely in the ST.
15. In COVID-19 patients, endothelial activation has been shown to be associated with elevated circulating markers of coagulation (e.g., D-dimers) and inflammation (e.g., TNF- α , IL-6, IL-2, and MCP-1). COVID-19 patients usually present with elevated platelet numbers, highly increased fibrinogen and slightly prolonged prothrombin and activated partial thromboplastin time.
16. Placentas from pregnancies complicated with chorioamnionitis (ChA), exhibited increased expression of ACE2 mRNA. Placental ACE2 protein localized to syncytiotrophoblast, in foetal blood vessels and M1/M2 macrophage and neutrophils within the villous stroma. Increased numbers of M1 macrophage and neutrophils were present in the placenta of ChA pregnancies. Placentas from pregnant women with COVID-19 and uninfected neonates show significant variability in the spectrum of pathology findings. Placentas from infected maternal-neonatal dyads are characterized by the finding of mononuclear cell inflammation of the intervillous space, termed chronic histiocytic intervillitis, together with syncytiotrophoblast necrosis.
17. Perhaps because the infection induces greater expression of ACE-2, attenuating the effects of internalization of ACE-2 itself. The virus finds an environment rich in cathepsins and furins, and with syncytial cells ready, the placenta acts as a buffer for the adverse effects of SARS-CoV-2 infection. However, both the pregnant woman and the placenta are not exempt from suffering thrombotic events, or even the foetus is exempt from suffering an infection.
18. The fact that M1 macrophages express more ACE-2 and mediate an inflammatory response offers a break in the immunosuppression offered by the placenta, which can be harmful to the foetus, but which can be located in the ST region, allowing viral containment to this site.

19. Never belittle the unknown opponent. We don't know of his strength. For outpatient management, consider that any symptom with pain in the hypochondria and epigastrium should be considered an urgency, and obstetric ultrasonography is necessary. We had a patient with acute loss of amniotic fluid, which could be signs of low (lung base) pneumonia with referred ipsilateral abdominal pain. The guidance to go to the hospital in the face of signs and symptoms caused by a virus, whose pathophysiology is unknown, was crucial for the excellent evolution of the pregnant woman and the foetus ([Figure 19](#), [Figure 20](#), [Figure 21](#) and [Figure 22](#)).

20. In summary, SARS-CoV-2 has a high performance to infect individuals of *Homo sapiens*, of any population, due to the presence of receptors that allow the infection to occur in different tissues. At the same time, the placenta offers specific mechanisms that favour protection for most pregnancies to generate viable fetuses.

The placenta buffers the effects of SARS-CoV-2 infection by:

- a) Immunosuppression - acting as corticosteroids, inhibiting the exacerbated inflammatory phase.
- b) Syncytiotrophoblast and trophoblast that "trap" the virus in an optimal environment, but that allows the action of macrophages and neutrophils that will act to eliminate the virus.
- c) The anaerobic glycolytic pathway very preserved in the first months of pregnancy.

Perhaps due to the exchange of deficient substances resulting from the internalization of ACE-2, but which the placenta produces, attenuating the nutritional demands related to Tryptophan and Phenylalanine.

References

1. (2021) Brasil ganha registro internacional de ensaios clínicos. ICICT.
2. Villar J, Ariff S, Gunier RB, Thiruvengadam R, Rauch S, et al. (2021) Maternal and neonatal morbidity and mortality among pregnant women with and without COVID-19 Infection: The intercovid multinational cohort study. *JAMA Pediatr* 175: 817-126.
3. Staud F, Karahoda R (2018) Trophoblast: The central unit of fetal growth, protection and programming. *Int J Biochem Cell Biol* 105: 35-40.
4. Xu C, Li X, Guo P, Wang J (2021) Hypoxia-induced activation of JAK/STAT3 signaling pathway promotes trophoblast cell viability and angiogenesis in Preeclampsia. *Med Sci Monit* 23: 4909-4917.
5. Karahoda R, Abad C, Horackova H, Kastner P, Zaugg J, et al. (2020) Dynamics of tryptophan metabolic pathways in human placenta and placental-derived cells: Effect of gestation age and trophoblast differentiation. *Front Cell Dev Biol* 8: 574034.
6. Pereira RD, de Long NE, Wang RC, Yazdi FT, Holloway AC, et al. (2015) Angiogenesis in the placenta: The role of reactive oxygen species signaling. *Biomed Res Int* 2015: 814543.
7. (2021) Anapath-UNICAMP.
8. (2021) Aprendendo Embriologia.
9. Sun T, Jiang D, Zhang L, Su Q, Mao W, et al. (2016) Expression profile of cathepsins indicates the potential of cathepsins B and D as prognostic factors in breast cancer patients. *Oncol Lett* 11: 575-583.
10. Turk V, Stoka V, Vasiljeva O, Renko M, Sun T, et al. (2012) Cysteine cathepsins: From structure, function and regulation to new frontiers. *Biochim Biophys Acta* 1824: 68-88.
11. Patel S, Homaei A, El-Seedi HR, Akhtar N (2018) Cathepsins: Proteases that are vital for survival but can also be fatal. *Biomed Pharmacother* 105: 526-532.
12. Faiz A, Tjin G, Harkness L, Weckmann M, Bao S, et al. (2013) The expression and activity of cathepsins D, H and K in asthmatic airways. *PLoS One* 8: e57245.
13. Niemeyer C, Matosin N, Kaul D, Philipsen A, Gassen NC (2020) The role of cathepsins in memory functions and the pathophysiology of psychiatric disorders. *Front Psychiatry* 11: 718.
14. Cao J, Pavlaki M, Zucker S, Dufour A, Calabrese N, et al. (2011) Furin functions as a nonproteolytic chaperone for matrix metalloproteinase-28: MMP-28 propeptide sequence requirement. *Biochem Res Int* 2011: 630319.
15. Anderson ED, VanSlyke JK, Thulin CD, Jean F, Thomas G (1997) Activation of the furin endoprotease is a multiple-step process: requirements for acidification and internal propeptide cleavage. *EMBO J* 16: 1508-1518.
16. Peacock TP, Goldhill DH, Zhou J, Baillon L, Frise R, et al. (2021) The furin cleavage site in the SARS-CoV-2 spike protein is required for transmission in ferrets. *Nature Microbiology* 6: 899-909.
17. Divya, Chhikara P, Mahajan VS, Gupta SD, Chauhan SS (2002) Differential activity of cathepsin L in human placenta at two different stages of gestation. *Placenta* 23: 59-64.
18. Liu T, Luo S, Libby P, Shi G-P (2020) Cathepsin L-selective inhibitors: A potentially promising treatment for COVID-19 patients. *Pharmacol Ther* 213: 107587.
19. (2021) Cathepsin - an overview.
20. Hassanein M, Bojja AS, Glazewski L, Lu G, Mason RW (2009) Protein processing by the placental protease, cathepsin P. *Mol Hum Reprod* 15: 433-442.
21. Yamamoto K, Kamata O, Kato Y (1984) Differential effects of anti-inflammatory agents on lysosomal cysteine proteinases cathepsins B and H from rat spleen. *Jpn J Pharmacol* 35: 253-258.
22. Buja LM, Wolf D, Zhao B, Akkanti B, McDonald M, et al. (2020) The emerging spectrum of cardiopulmonary pathology of the coronavirus disease 2019 (COVID-19): Report of 3 autopsies from Houston, Texas, and review of autopsy findings from other United States cities. *Cardiovas Pathol* 48: 107233.
23. Nienhold R, Ciani Y, Koelzer VH, Tzankov A, Haslbauer JD, et al. (2020) Two distinct immunopathological profiles in autopsy lungs of COVID-19. *Nat Commun* 11: 5086.
24. Evert K, Dienemann T, Brochhausen C, Lunz D, Lubnow M, et al. (2021) Autopsy findings after long-term treatment

- of COVID-19 patients with microbiological correlation. *Virchows Arch* 479: 97-108.
25. Valli A, Ranta N, Grönholm A, Silvennoinen O, Pesu M, et al. (2019) Increased expression of proprotein convertase enzyme *FURIN* in rheumatoid arthritis. *Scand J Rheumatol* 48: 173-177.
 26. Najjar FE, Lampe L, Baker ML, Wang L-F, Dutch RE (2021) Analysis of cathepsin and furin proteolytic enzymes involved in viral fusion protein activation in cells of the bat reservoir host. *PLoS One* 10: e0115736.
 27. Langnau C, Rohlfing A-K, Gekeler S, Günter M, Pöschel S, et al. (2021) Platelet activation and plasma levels of furin are associated with prognosis of patients with coronary artery disease and COVID-19. *Arterioscler, Thromb Vasc Biol* 41: 2080-2096.
 28. Olson OC, Joyce JA (2015) Cysteine cathepsin proteases: Regulators of cancer progression and therapeutic response. *Nat Rev Cancer* 15: 712-729.
 29. Facciabene A, Peng X, Hagemann IS, Balint K, Barchetti A, et al. (2011) Tumour hypoxia promotes tolerance and angiogenesis via CCL28 and T reg cells. *Nature* 475: 226-230.
 30. de Assis Barros D'Elia ZLGF, de Lima GL (2021) The COVID-19 burden or tryptophan syndrome: Autoimmunity, Immunoparalysis and tolerance in a tumorigenic environment. *J Infect Dis Epidemiol* 7: 195.
 31. Pišlar A, Mitrović A, Sabotić J, PečarFonović U, Perišić Nanut M, et al. (2020) The role of cysteine peptidases in coronavirus cell entry and replication: The therapeutic potential of cathepsin inhibitors. *PLoS Pathog* 16: e1009013.
 32. Xia S, Lan Q, Su S, Wang X, Xu W, et al. (2020) The role of furin cleavage site in SARS-CoV-2 spike protein-mediated membrane fusion in the presence or absence of trypsin. *Signal Transduction and Targeted Therapy* 5: 92.
 33. Peacock TP, Goldhill DH, Zhou J, Baillon L, Frise R, et al. (2021) The furin cleavage site of SARS-CoV-2 spike protein is a key determinant for transmission due to enhanced replication in airway cells.
 34. Banik NL, Matzelle D, Terry E, Hogan EL (1997) A new mechanism of methylprednisolone and other corticosteroids action demonstrated in vitro: Inhibition of a proteinase (calpain) prevents myelin and cytoskeletal protein degradation. *Brain Res* 748: 205-210.
 35. Burnett D, Stockley RA (1985) Cathepsin B-like cysteine proteinase activity in sputum and bronchoalveolar lavage samples: Relationship to inflammatory cells and effects of corticosteroids and antibiotic treatment. *Clin Sci* 68: 469-474.
 36. Saad AF, Chappell L, Saade GR, Pacheco LD (2020) Corticosteroids in the management of pregnant patients with coronavirus disease (COVID-19). *Obstet Gynecol* 136: 823-826.
 37. Shook LL, Bordt EA, Meinsohn M-C, Pepin D, De Guzman RM, et al. (2021) Placental expression of ACE2 and TMPRSS2 in maternal SARS-CoV-2 infection: Are placental defenses mediated by fetal sex? *J Infect Dis*.
 38. Gengler C, Dubruc E, Favre G, Greub G, Leval L de, et al. (2021) SARS-CoV-2 ACE-receptor detection in the placenta throughout pregnancy. *Clin Microbiol Infect* 27: 489-490.
 39. Decher RS, Poole AR, Dingle JT, Wildenthal K (1978) Influence of methylprednisolone of the sequential redistribution of cathepsin D and other lysosomal enzymes during myocardial ischemia in rabbits. *J Clin Invest* 62: 797-804.
 40. Zanella LGF de ABD, Paraskevopoulos DK de S, Galvao L de L, Yamaguti A (2021) Methylprednisolone pulse therapy in COVID-19 as the first choice for public health: When right timing breaks controversies-emergency guide. *Open Journal of Emergency Medicine* 9: 84-114.
 41. Edalatfard M, Akhtari M, Salehi M, Naderi Z, Jamshidi A, et al. (2020) Intravenous methylprednisolone pulse as a treatment for hospitalised severe COVID-19 patients: Results from a randomised controlled clinical trial. *Eur Respir J* 56: 2002808.
 42. Lu J, Tan M, Cai Q (2015) The Warburg effect in tumor progression: Mitochondrial oxidative metabolism as an anti-metastasis mechanism. *Cancer Lett* 356: 156-164.
 43. Fox H (1997) Aging of the placenta. *ADC - Fetal and Neonatal Edition* 77: 171-175.
 44. Wang Y, Zhao S (2010) Vasculogenesis and angiogenesis of human placenta.
 45. Bartho LA, Fisher JJ, Cuffe JSM, Perkins AV (2020) Mitochondrial transformations in the aging human placenta. *Am J Physiol Endocrinol Metab* 319: E981-E994.
 46. Sultana Z, Maiti K, Aitken J, Morris J, Dedman L, et al. (2017) Oxidative stress, placental ageing-related pathologies and adverse pregnancy outcomes. *Am J Reprod Immunol* 77: e12653.
 47. Aye ILMH, Aiken CE, Charnock-Jones DS, Smith GCS (2020) Placental energy metabolism in health and disease-significance of development and implications for preeclampsia. *Am J Obstet Gynecol*.
 48. Fogarty NME, Ferguson-Smith AC, Burton GJ (2013) Syncytial knots (Tenney-parker changes) in the human placenta: Evidence of loss of transcriptional activity and oxidative damage. *Am J Pathol* 183: 144-152.
 49. Morosin SK, Delforce SJ, Corbisier de Meaultsart C, Lumbers ER, Pringle KG (2021) *FURIN* and placental syncytialisation: A cautionary tale. *Cell Death & Disease* 12: 635.
 50. Manzoli TF, Delgado AF, Troster EJ, de Carvalho WB, Antunes ACB, et al. (2016) Lymphocyte count as a sign of immunoparalysis and its correlation with nutritional status in pediatric intensive care patients with sepsis: A pilot study. *Clinics* 71: 644-649.
 51. Miao D, Li DY, Chen M, Zhao MH (2017) Platelets are activated in ANCA-associated vasculitis via thrombin-PARs pathway and can activate the alternative complement pathway. *Arthritis Res Ther* 19: 252.
 52. Cate HT, Brandjes DPM, Smits PHM, van Mourik JA (2003) The role of platelets in venous thrombosis: A patient with Glanzmann's thrombasthenia and a factor V leiden mutation suffering from deep venous thrombosis. *J Thromb Haemost* 1: 394-395.
 53. Bozzani A, Arici V, Tavazzi G, Franciscone MM, Danesino V, et al. (2020) Acute arterial and deep venous thromboembolism in COVID-19 patients: Risk factors and personalized therapy. *Surgery* 168: 987-992.
 54. Cheruiyot I, Kipkorir V, Ngure B, Misiani M, Munguti J, et al. (2020) Arterial thrombosis in coronavirus disease 2019 patients: A rapid systematic review. *Annals of Vascular Surgery* 70: 273-281.

55. Azkur AK, Akdis M, Azkur D, Sokolowska M, van de Veen W, et al. (2020) Immune response to SARS-CoV-2 and mechanisms of immunopathological changes in COVID-19. *Allergy* 75: 1564-1581.
56. Boros FA, Vécsei L (2019) Immunomodulatory effects of genetic alterations affecting the kynurenine pathway. *Front Immunol* 10: 2570.
57. Frieman M, Baric R (2008) Mechanisms of severe acute respiratory syndrome pathogenesis and innate immunomodulation. *Microbiol Mol Biol Rev* 72: 672-685.
58. Omran HM, Almaliki MS (2020) Influence of NAD⁺ as an ageing-related immunomodulator on COVID 19 infection: A hypothesis. *Journal of Infection and Public Health* 13: 1196-1201.
59. Kimura A, Kishimoto T (2021) IL-6: Regulator of Treg/Th17 balance. *Eur J Immunol* 40: 1830-1835.
60. Kitamura H, Kamon H, Sawa S-I, Park S-J, Katunuma N, et al. (2005) IL-6-STAT3 controls intracellular MHC class II alphabeta dimer level through cathepsin S activity in dendritic cells. *Immunity* 23: 491-502.
61. Leandro CG, Silva WTEF, Lima-Silva C AE (2020) Covid-19 and exercise-induced immunomodulation 27: 75-78.
62. Attademo L, Bernardini F (2021) Are dopamine and serotonin involved in COVID-19 pathophysiology? *Eur J Psychiatry* 35: 62-63.
63. Zanella LGF de ABD (2021) NEUROCOV/PSYCCOV: Neuropsychiatric phenomena in COVID-19 - exposing their hidden essence and warning against iatrogenesis. *J Infect Dis Epidemiol* 7: 222.
64. Favre D, Mold J, Hunt PW, Kanwar B, Loke P, et al. (2010) Tryptophan catabolism by indoleamine 2, 3-dioxygenase 1 alters the balance of TH17 to regulatory T cells in HIV disease. *Sci Transl Med* 2: 32-36.
65. Jenkins TA, Nguyen JCD, Polglaze KE, Bertrand PP (2016) Influence of tryptophan and serotonin on mood and cognition with a possible role of the gut-brain axis. *Nutrients* 8: 56.
66. Anderson G, Carbone A, Mazzocchi G (2021) Tryptophan metabolites and aryl hydrocarbon receptor in severe acute respiratory syndrome, coronavirus-2 (SARS-CoV-2) pathophysiology. *Int J Mol Sci* 22: 1597.
67. Souza ASR, Amorim MMR (2021) Maternal mortality by COVID-19 in Brazil. *Rev Bras de Saúde Mater Infant* 21: 253-256.
68. Gurzenda S, Castro MC (2021) COVID-19 poses alarming pregnancy and postpartum mortality risk in Brazil. *EClinicalMedicine* 36: 100917.
69. Zaitsev AA, Golukhova EZ, Mamalyga ML, Chernov SA, Rybka MM, et al. (2020) Efficacy of methylprednisolone pulse therapy in patients with COVID-19. *Clinical Microbiology and Antimicrobial Chemotherapy* 22: 88-91.
70. Ho JC, Ooi GC, Mok TY, Chan JW, Hung I, et al. (2003) High-dose pulse versus nonpulse corticosteroid regimens in severe acute respiratory syndrome. *Am J Respir Crit Care Med* 168: 1449-1456.
71. Ruiz-Irastorza G, Pijoan J-I, Bereciartua E, Dunder S, Dominguez J, et al. (2020) Second week methylprednisolone pulses improve prognosis in patients with severe coronavirus disease 2019 pneumonia: An observational comparative study using routine care data. *PLoS One* 15: e0239401.
72. Martin JN, Morris RF (2019) Preeclampsia-spectrum hypertensive disorders of pregnancy: Gestational hypertension, preeclampsia, eclampsia, chronic hypertension, and HELLP syndrome. In: *Sex Differences in Cardiovascular Physiology and Pathophysiology*, Elsevier, 121-136.
73. Steven S, Daiber A, Dopheide JF, Münzel T, Espinola-Klein C (2017) Peripheral artery disease, redox signaling, oxidative stress - Basic and clinical aspects. *Redox Biol* 12: 787-797.
74. Azinheira Nobrega Cruz N, Stoll D, Casarini DE, Bertagnoli M (2021) Role of ACE2 in pregnancy and potential implications for COVID-19 susceptibility. *Clin Sci* 135: 1805-1824.
75. Singer D, Camargo SMR (2011) Channels Collectrin and ACE2 in renal and intestinal amino acid transport. *Channels* 5: 410-423.
76. Yan R, Zhang Y, Li Y, Xia L, Guo Y, et al. (2020) Structural basis for the recognition of SARS-CoV-2 by full-length human ACE2. *Science* 367: 1444-1448.
77. Dézsi L, Tuka B, Martos D, Vécsei L (2015) Alzheimer's disease, astrocytes and kynurenines. *Curr Alzheimer Res* 12: 462-480.
78. Nguyen NT, Nakahama T, Le DH, Son L van, Chu HH, et al. (2014) Aryl hydrocarbon receptor and kynurenine: Recent advances in autoimmune disease research. *Front Immunol* 5: 551.
79. Favennec M, Hennart B, Caiazzo R, Leloire A, Yengo L, et al. (2015) The kynurenine pathway is activated in human obesity and shifted toward kynurenine monooxygenase activation. *Obesity* 23: 2066-2074.
80. Wang Y, Yao R, Zhang L, Xie X, Chen R, et al. (2019) IDO and intra-tumoral neutrophils were independent prognostic factors for overall survival for hepatocellular carcinoma. *J Clin Lab Anal* 33: e22872.
81. Sorgdrager FJH, Naudé PJW, Kema IP, Nollen EA, Deyn PP de (2019) Tryptophan metabolism in inflammaging: From biomarker to therapeutic target. *Front Immunol* 10: 2565.
82. Peters MAM, Walenkamp AME, Kema IP, Meijer C, de Vries EGE, et al. (2014) Dopamine and serotonin regulate tumor behavior by affecting angiogenesis. *Drug Resist Updat* 17: 96-104.
83. Amobi A, Qian F, Lugade AA, Odunsi K (2017) Tryptophan catabolism and cancer immunotherapy targeting IDO mediated immune suppression. *Adv Exp Med Biol* 1036: 129-144.
84. Moffett JR, Namboodiri MA (2003) Tryptophan and the immune response. *Immunol Cell Biol* 81: 247-265.
85. Badawy AAB (2017) Kynurenine pathway of tryptophan metabolism: Regulatory and functional aspects. *Int Journal Tryptophan Res* 10: 1178646917691938.
86. Goeden N, Velasquez JC, Bonnin A (2013) Placental tryptophan metabolism as a potential novel pathway for the developmental origins of mental diseases. *Translational Developmental Psychiatry* 1: 20593.
87. Broekhuizen M, Klein T, Hitzerd E, de Rijke YB, Schoenmakers S, et al. (2020) L-tryptophan-induced vasodilation is enhanced in preeclampsia: Studies on its uptake and metabolism in the human placenta. *Hypertension* 76: 184-194.
88. Mao Q, Chu S, Shapiro S, Bliss JM, Paepe MED (2021)

- Increased placental expression of angiotensin-converting enzyme 2, the receptor of SARS-CoV-2, associated with hypoxia in twin anemia-polycythemia sequence (TAPS). *Placenta* 105: 7-13.
89. Aljaser FS, Ghneim HK, ALshubaily MM, Abudawood M, Almajed F, et al. (2021) Glutathione and oxidized nicotinamide adenine dinucleotide (NAD⁺) redox status in plasma and placental tissue of Saudi patients with intrauterine growth restriction. *Saudi Med J* 42: 491-498.
 90. Abuelezz SA, Hendawy N, Magdy Y (2017) Targeting oxidative stress, cytokines and serotonin interactions via indoleamine 2, 3 dioxygenase by coenzyme Q10: Role in suppressing depressive like behavior in rats. *J Neuroimmune Pharmacol* 12: 277-291.
 91. Fu L, Zhang L (2019) Serotonylation: A novel histone H3 marker. *Signal Transduction and Targeted Therapy* 4: 1-2.
 92. Sauve AA (2008) NAD⁺ and vitamin B3: From metabolism to therapies. *J Pharmacol Exp Ther* 324: 883-893.
 93. Moffett JR, Arun P, Puthillathu N, Vengilote R, Ives JA, et al. (2020) Quinolinic acid as a marker for kynurenine metabolite formation and the unresolved question of NAD⁺ synthesis during inflammation and infection. *Front Immunol* 11: 31.
 94. Miller R, Wentzel AR, Richards GA (2020) COVID-19: NAD⁺ deficiency may predispose the aged, obese and type2 diabetics to mortality through its effect on SIRT1 activity. *Med Hypotheses* 144: 110044.
 95. Kurlak LO, Williams PJ, Bulmer JN, Pipkin FB, Mistry HD (2015) Placental expression of adenosine A_{2A} receptor and hypoxia inducible factor-1 alpha in early pregnancy, term and pre-eclamptic pregnancies: Interactions with placental renin-angiotensin system. *Placenta* 36: 611-613.
 96. Escudero C, Roberts JM, Myatt L, Feoktistov I (2014) Impaired adenosine-mediated angiogenesis in preeclampsia: Potential implications for fetal programming. *Front Pharmacol* 5: 134.
 97. Allard B, Allard D, Buisseret L, Stagg J (2020) The adenosine pathway in immuno-oncology. *Nat Rev Clin Oncol* 17: 611-629.
 98. Borea PA, Gessi S, Merighi S, Vincenzi F, Varani K (2018) Pharmacology of adenosine receptors: The state of the art. *Physiol Rev* 98: 1591-1625.
 99. Colgan SP, Eltzschig HK (2012) Adenosine and hypoxia-inducible factor signaling in intestinal injury and recovery. *Annu Rev Physiol* 74: 153-175.
 100. Liu Z, Yan S, Wang J, Xu Y, Wang Y, et al. (2017) Endothelial adenosine A_{2A} receptor-mediated glycolysis is essential for pathological retinal angiogenesis. *Nature Communications* 8: 1-18.
 101. Acurio J, Troncoso F, Bertoglia P, Salomon C, Aguayo C, et al. (2014) Potential role of A_{2B} adenosine receptors on proliferation/migration of fetal endothelium derived from preeclamptic pregnancies. *Biomed Res Int* 2014: 274507.
 102. Kula BE, Clancy CJ, Nguyen MH, Schwartz IS (2021) Invasive mould disease in fatal COVID-19: A systematic review of autopsies. *The Lancet Microbe* 2: e405-e414.
 103. Nucci M, Barreiros G, Guimarães LF, Deriquehem VAS, Castiñeiras AC, et al. (2021) Increased incidence of candidemia in a tertiary care hospital with the COVID-19 pandemic. *Mycoses* 64: 152-156.
 104. Gold JE, Okyay RA, Licht WE, Hurley DJ (2021) Investigation of long COVID prevalence and its relationship to epstein-barr virus reactivation. *Pathogens* 10: 763.
 105. Hernandez JM, Singam H, Babu A, Aslam S, Lakshmi S (2021) SARS-CoV-2 infection (COVID-19) and herpes simplex virus-1 conjunctivitis: Concurrent viral infections or a cause-effect result? *Cureus* 13: e12592.
 106. Seeßle J, Hippchen T, Schnitzler P, Gsenger J, Giese T, et al. (2021) High rate of HSV-1 reactivation in invasively ventilated COVID-19 patients: Immunological findings. *PLoS One* 16: e0254129.
 107. Kamal YM, Abdelmajid Y, Madani AAR, et al. (2020) Case report: Cerebrospinal fluid confirmed COVID-19-associated encephalitis treated successfully. *BMJ Case Rep* 13: 237378.
 108. Amiya S, Hirata H, Shiroyama T, Adachi Y, Niitsu T, et al. (2021) Fatal cytomegalovirus pneumonia in a critically ill patient with COVID-19. *Respirology Case Rep* 9: e00801.
 109. Shanshal M, Ahmed HS (2021) COVID-19 and herpes simplex virus infection: A cross-sectional study. *medRxiv*.
 110. Kadambari S, Klennerman P, Pollard AJ (2020) Why the elderly appear to be more severely affected by COVID-19: The potential role of immunosenescence and CMV. *Rev Med Virol* 30: e2144.
 111. Payne JL, Maguire J (2019) Pathophysiological mechanisms implicated in postpartum syndrome. *Front Neuroendocrinol* 52: 165-180.
 112. Meakin AS, Cuffe JSM, Darby JRT, Morrison JL, Clifton VL (2021) Let's talk about placental sex, baby: Understanding mechanisms that drive female- and male-specific fetal growth and developmental outcomes. *Int J Mol Sci* 22: 6386.
 113. DeBerardinis RJ, Chandel NS (2020) We need to talk about the Warburg effect. *Nat Metab* 2: 127-129.
 114. <https://www.sciencedirect.com/topics/nursing-and-health-professions/alanine>
 115. <https://onlinesciencenotes.com/nitrogen-excretion-through-urea-cycle-and-associated-disorders/>
 116. [https://www.journal-of-hepatology.eu/article/S0168-8278\(18\)32176-7/fulltext](https://www.journal-of-hepatology.eu/article/S0168-8278(18)32176-7/fulltext)
 117. Herrera E, Desoye G (2016) Maternal and fetal lipid metabolism under normal and gestational diabetic conditions. *Horm Mol Biol Clin Invest* 26: 109-127.
 118. Platten M, Nollen EAA, Röhrig UF, Fallarino F, Opitz CA, et al. (2019) Tryptophan metabolism as a common therapeutic target in cancer, neurodegeneration and beyond. *Nat Rev Drug Discov* 18: 379-401.
 119. (2021) Tryptophan and serotonin in the placenta: Role in foetal programming. Science Portal, Charles University.
 120. Masuda K, Kimura A, Hanieh H, Nguyen NT, Nakahama T, et al. (2011) Aryl hydrocarbon receptor negatively regulates LPS-induced IL-6 production through suppression of histamine production in macrophages. *Int Immunol* 23: 637-645.
 121. Blaschitz A, Gauster M, Fuchs D, Lang I, Maschke P, et al. (2011) Vascular endothelial expression of indoleamine 2,3-dioxygenase 1 forms a positive gradient towards the feto-maternal interface. *PLoS One* 6: e21774.