



ESSENTIAL IMAGES

Large Thoracoabdominal Pancreatic Pseudocyst in a COVID-19 Patient

Bhargav Kansara, BS^{1*}  and Harshna V Vadvala, MD² 

¹USF Health Morsani College of Medicine, University of South Florida, USA

²Department of Radiology, Moffitt Cancer Center, University of South Florida, USA

*Corresponding author: Bhargav Kansara, BS, USF Health Morsani College of Medicine, University of South Florida, Tampa, FL 560 Channelside Dr Tampa, FL 33602, USA, Tel: 813-679-2175



A 38-year-old female with a history of pancreatitis presented with breathing difficulties and tested positive for COVID-19. A CT of her chest, abdomen and pelvis with contrast showed a 8.5 × 13.1 × 25.4 cm (AP × ML × CC) multilobulated abdominal cyst extending into the posterior mediastinum with bilateral pleural effusion (Figure 1A). CT scan MipPR reconstruction showed the relation of the pseudocyst with abdominal and thoracic vessels (Figure 1B).

Magnetic resonance cholangiopancreatography (MRCP) showed communication between the pseudocyst and the main pancreatic duct (Figure 1C). Esophagogastroduodenoscopy (EGD) with EUS confirmed a pancreatic pseudocyst through elevated amylase levels, and subsequent cystogastrostomy and cystoduodenostomy reduced the cyst [1]. A pancreatic pseudocyst is a complication of acute and chronic pancreatitis in which pancreatic secretions are found

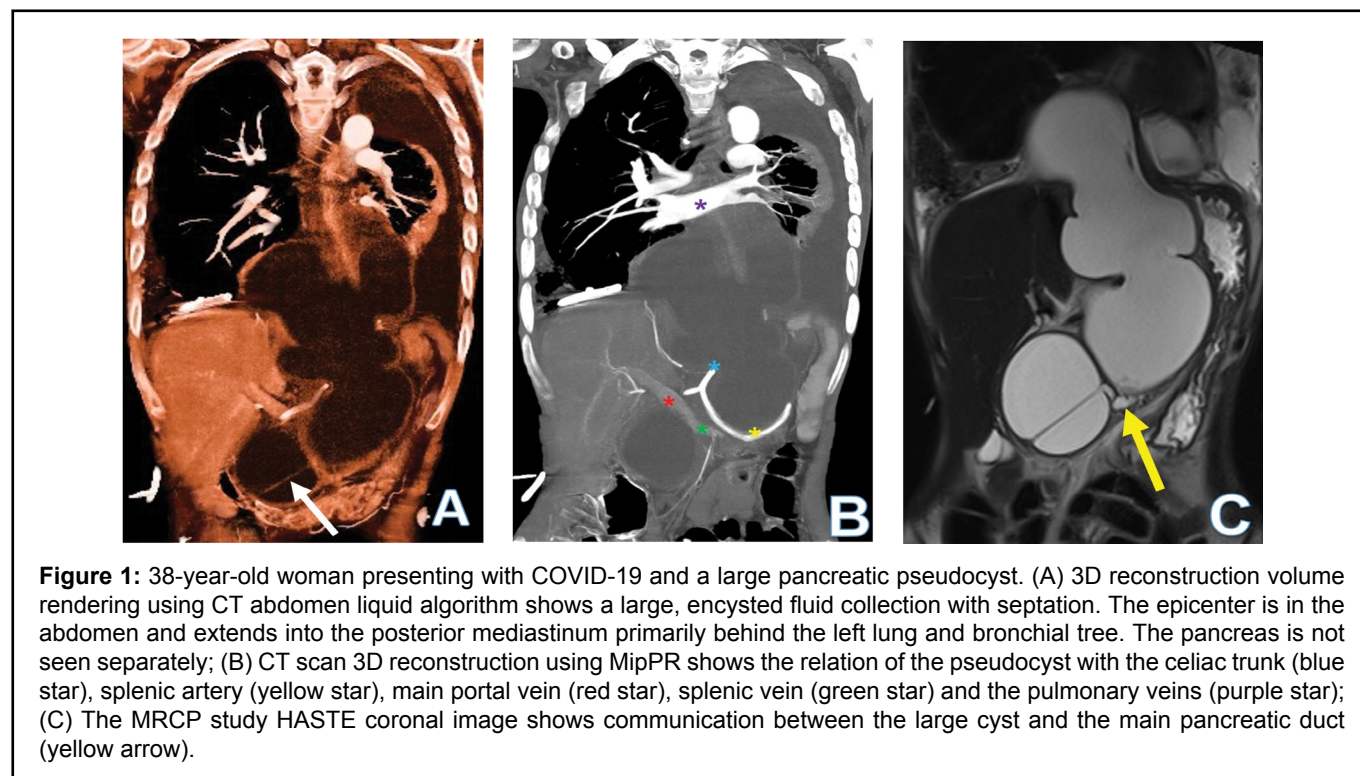


Figure 1: 38-year-old woman presenting with COVID-19 and a large pancreatic pseudocyst. (A) 3D reconstruction volume rendering using CT abdomen liquid algorithm shows a large, encysted fluid collection with septation. The epicenter is in the abdomen and extends into the posterior mediastinum primarily behind the left lung and bronchial tree. The pancreas is not seen separately; (B) CT scan 3D reconstruction using MipPR shows the relation of the pseudocyst with the celiac trunk (blue star), splenic artery (yellow star), main portal vein (red star), splenic vein (green star) and the pulmonary veins (purple star); (C) The MRCP study HASTE coronal image shows communication between the large cyst and the main pancreatic duct (yellow arrow).

enclosed in a fibrous membrane [2]. While management of the patient was complicated by COVID-19 as a comorbidity, the pseudocyst was successfully treated through an endoscopic approach.

Conflict of Interest

None of the authors have anything to disclose and have no conflict of interest. This research did not receive any specific funding or grant from agencies in the public, commercial, or not-for-profit sectors.

References

1. Farias GFA, Bernardo WM, De Moura DTH, Guedes HG, Brunaldi VO, et al. (2019) Endoscopic versus surgical treatment for pancreatic pseudocysts. *Medicine (Baltimore)* 98: e14255.
2. Pan G, Wan MH, Xie KL, Li W, Hu WM, et al. (2015) Classification and management of pancreatic pseudocysts. *Medicine* 94: e960.