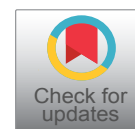




ORIGINAL ARTICLE

Quantification and Risk Assessment of Heavy Metals in Groundwater and Soil of Residential Areas around Awotan Landfill, Ibadan, Southwest-Nigeria

Olagunju TE^{1*}, Olagunju AO², Akawu IH³ and Ugokwe CU⁴



¹Department of Biology/Microbiology/Biotechnology, Alex Ekwueme Federal University, Ndufu-Alike Ikwo, Ebonyi State, Nigeria

²Department of Pure and Applied Chemistry, Ladoke Akintola University of Technology, Ogbomosho, Oyo State, Nigeria

³Department of Zoology, University of Ibadan, Ibadan, Oyo State, Nigeria

⁴Department of Zoology and Environmental Biology, University of Nigeria, Nsukka, Enugu State, Nigeria

*Corresponding author: Temidayo Ebenezer Olagunju, Department of Biology/Microbiology/Biotechnology, Alex Ekwueme Federal University, Ndufu-Alike Ikwo, Ebonyi State, Nigeria

Abstract

Non-sanitary landfill poses enormous threats to lives. In this study, heavy metals in groundwater and soil of residential areas around Awotan landfill, Ibadan, Southwest-Nigeria were quantified and associated environmental and health risks were assessed within 1-150 m and 151-300 m radii. A total of 20 samples of groundwater and soil each were analysed for Pb, Cd, Cr, Ni, Cu, Fe and Zn using Atomic Absorption Spectrometry (AAS). Pb was above the WHO permissible limit in groundwater while Cd was above the limit only at 1-150 m radius. There was a strong correlation ($p < 0.05$) between the metals. Except for Zn, levels of all analysed metals in groundwater and soil were proportional to proximity to the landfill as revealed by horizontal ratio ($H_R > 1$). Contamination index of individual metal revealed moderate level of contamination ($1 \leq C_F \leq 3$) but pollution load index of all analysed metals in the matrices showed heavy metal pollution ($PLI > 1$). Generally, geoaccumulation index indicated moderate pollution within 1-150 m radius ($0 < I_{Geo} \leq 2$) while I_{Geo} was ≤ 0 within 151-300 m radius (practically unpolluted). Metals were minimally to moderately enrich ($0 < E_F < 5$) in the studied matrices and low ecological risk ($PERI < 150$) was evaluated in the study area due to the landfill. However, health index calculated for the metals through ingestion and dermal absorptions was > 1 while through inhalation was < 1 . Furthermore, children and those living close to the landfill were shown to be at higher risk than adults and those living farther away from the landfill respectively. Awotan landfill poses considerable ecological and health risks. Hence, the landfill should be sanitariously

reconstructed while acceptable standards should be enforced in managing it thereafter.

Keywords

Risks assessment, Heavy Metals, Groundwater, Soil, Landfill

Introduction

Human population has continued to increase unabatedly with its attendant consequences such as unprecedented and enormous quantities of generated and discarded solid wastes. Consequently, many countries are faced with the challenges of waste management. In developing countries particularly, solid wastes are massively dumped in open landfills without requisite capability to manage them [1]. In cities of these countries, outskirts portion of settlements which usually become part of residential and commercial areas overtime due to community expansion are chosen as landfill. In Nigeria, improper management of solid wastes is a major environmental issue and open landfill is a common practice of waste disposal. Sadly, sanitary landfills are almost not available in the country including landfills managed by waste management agencies of government. Meanwhile, these landfill wastes contain numerous toxic chemicals such as heavy metals, poly-

cyclic aromatic hydrocarbons (PAHs), polychlorinated biphenyls (PCBs) and other persistent organic pollutants (POPs) which contaminates adjacent soil environment and then leach into groundwater [2,3].

Groundwater is a major source of water for people living in non-riverine areas. Groundwater pollution by leachate from landfill has been a long time issue of public health concern. Runoffs, underflow of groundwater, infiltration from precipitation takes toxicants from the landfill wastes to the groundwater and soil of nearby residential area [4]. The constituents, toxicity and level of risk of a landfill leachate are dependent on the components of the waste materials and availability of impermeable under-liner and leachate collection system [5,6]. Chemical compounds in leachates pose serious risks to ecosystem and human health when the chemicals migrate to surface water, groundwater or accumulated in food source such as vegetables or fishes [7].

Heavy metal contamination has been considered as a serious environmental health issue due to their toxicity even at low concentration, persistence and bioaccumulation potential. Heavy metal contamination may have devastating effects on the ecological integrity of the receiving environment and human health [8-10]. Lead (Pb), chromium (Cr) and cadmium (Cd) are non-essential metals of serious health concern in the environment. Exposures to Pb have been implicated to cause lung cancer, mental retardation in children, anaemia and kidney dysfunction [11,12]. Cr and Cd have been reported to be hepatotoxic, neurotoxic, renal-toxic and carcinogenic [13,14]. Zinc (Zn) and copper (Cu) are essential elements for normal body growth and functioning but at high concentrations, Zn inhibits respiratory function [15] while Cu bioconcentration interferes with proper conversion of thyroid hormone and interferes with adrenal hormone production [16]. Nickel (Ni) is both essential and toxic to human depending on the exposed concentration and form. Ni is carcinogenic and also enhanced disease-causing organisms that rely on nickel-based enzyme to initiate pathogenesis [17]. Iron (Fe) plays numerous biological roles in controlling certain metabolic and signalling functions; however, its redox-active form produce oxidative stress by binding to thiols in the cell [18]. Hence, environmental management of municipal wastes which contains high concentrations of these metals is of interest to environmental scientist, public health experts, environmental policy makers and regulatory agencies.

Quantifying the environmental load of toxicants is often one of the initial steps in monitoring and management of such pollutants. Standard regulatory agencies such as World Health Organization (WHO), United State Environmental Protection Agency (USEPA), and Nigerian Environmental Standard Regulatory Agency (NESREA) etc. set permissible limits for various pollutants in the environment, above which the environment could

be regarded as polluted and risky. Risk assessment is considered in ecotoxicology and ecohealth as the characterization of potential adverse effects on ecosystem and human health upon exposure to environmental toxicants. Environmental and health risk models have been employed to help identify and measure quantitatively, environmental and health hazards and to determine possible routes of exposure and represent the potential risk [19].

Environmental and risk assessment studies in Nigeria have majorly been on mining sites [20,21], fish and edible crops [22,23], but there is dearth of information regarding risk assessment associated with landfill. Few researchers such as [24] estimated the concentrations of selected metals in Awotan landfill but with no attempt at assessing the risks associated with them. This study therefore deals with the quantitative determination, environmental and health risk assessment of some heavy metals (Pb, Cd, Cr, Ni, Cu, Fe and Zn) in groundwater and soil of residential area around Awotan Landfill, Ibadan, Southwest-Nigeria.

Methods

Study area, sampling and analysis

Awotan landfill (AWL) is situated in Ibadan, Ido Local Government Area (LGA) of Oyo State, Nigeria within latitude 7° 27'47.0478''N and longitude 3° 50'56.781''E (Figure 1). The landfill is one of the largest in the state occupying an area of 81 acres. Twenty samples of groundwater and soil each were randomly collected at residential area within 1-50 m and 151-300 m distances from AWL. Groundwater and soil samples from Aduloju Estate Area of Bodija, Ibadan were obtained as controls and background values as the site has no record of environmental distortions. Samples of groundwater were collected from wells and boreholes, filtered through Whatman filter (42 µm) into pre-washed bottles and kept under 4 °C before analysis. Soil samples were collected from topsoil into prewashed polythene bags and transported to the laboratory. Soil samples were air-dried, pulverised and sieved with 0.5 mm mesh sieve. Acid digestion was done by adding to 3 g of the sieved fraction, 15 ml of freshly prepared mixture of HNO₃/HClO₄ (2:1) before heating in a fume cupboard to obtain a clear solution. Analyses of Lead (Pb), Cadmium (Cd), Chromium (Cr), Nickel (Ni), Copper (Cu), Iron (Fe) and Zinc (Zn) were done in solutions gotten from the treated samples of water and soil using Atomic Absorption Spectrophotometer (AAS).

Statistical analysis

Data obtained were analysed statistically with SPSS v.20 using one way analysis of variance (ANOVA) followed by Bonferonni's Test for comparison of means. Correlation analysis was done using Pearson Correlation Test to assess elemental association in the studied site.

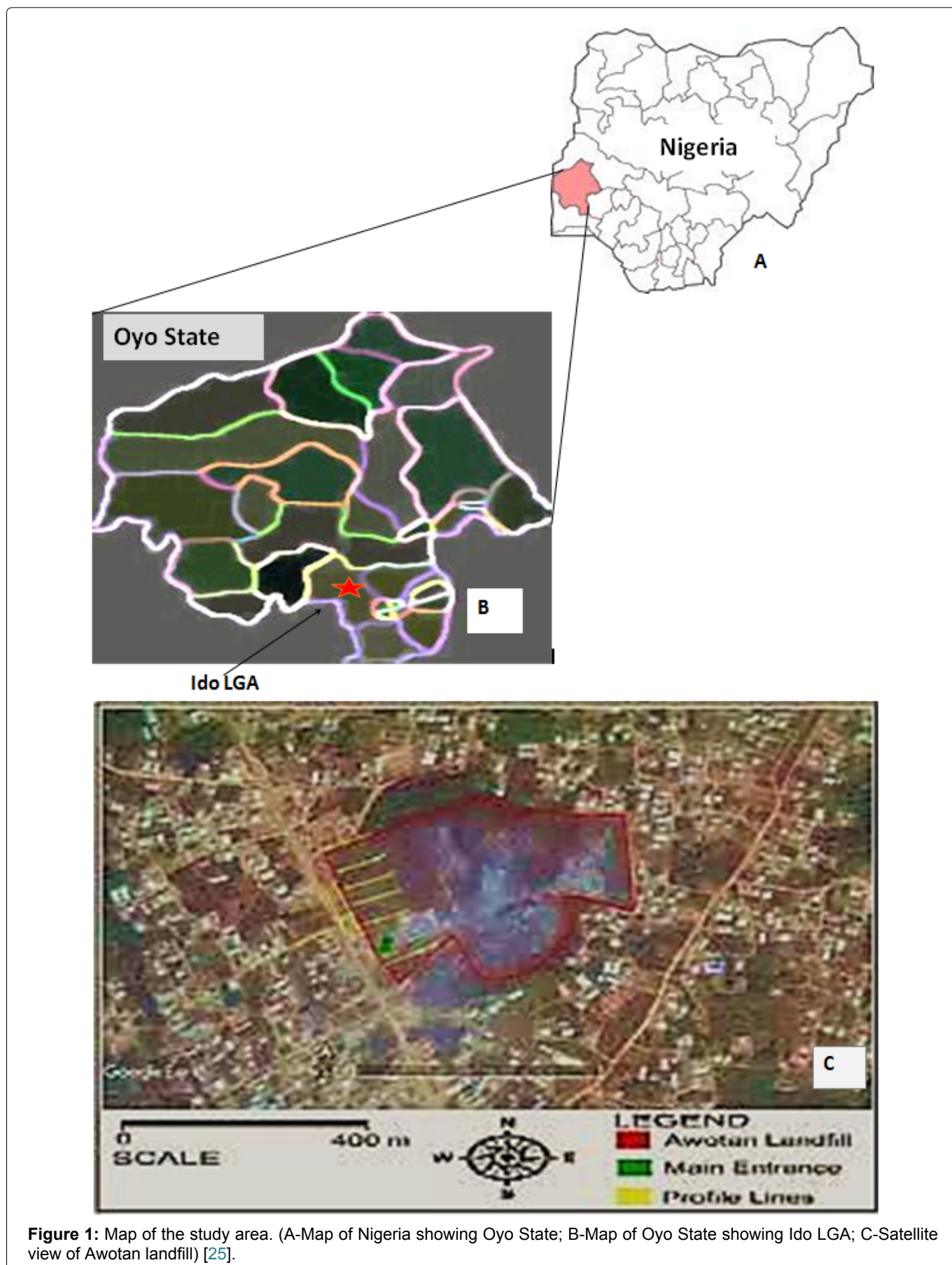


Figure 1: Map of the study area. (A-Map of Nigeria showing Oyo State; B-Map of Oyo State showing Ido LGA; C-Satellite view of Awotan landfill) [25].

Environmental risk assessments (ERA)

USEPA ERA models were employed to evaluate the environmental risks associated with heavy metals in groundwater and soil in residential area around AWL.

Values of heavy metals in groundwater and soil in 1-150 m and 151-300 m radii were compared with WHO standard limits and with background values.

$$\text{Horizontal Ration } (H_R) = \frac{CF_{mi}}{CF_{mii}} \quad (1)$$

Horizontal ratio measures horizontal transportation of heavy metals from pollution source. CF_{mi} is the concentration of metal in site A and CF_{mii} is the concentration of metal in site B.

$H_R > 1$ = site A is the possible pollution source or closest to pollution source; $H_R < 1$ = site B is the possible pollution source or closest to pollution source and H_R value of 1 = site A and Site B are independent.

$$\text{Contamination Factor } (C_F) = \frac{CF_m}{CF_b} \quad (2)$$

CF_m is the mean concentration of metal and CF_b is the background value of the metal.

C_F value < 1 = low contamination; C_F value between 1 and 3 = moderate contamination; C_F value between 3 and 6 = considerable contamination and C_F value > 6 = very high contamination [26].

$$\text{Degree of Contamination } C_{deg} = \sum(C_{Fa}) \quad (3)$$

$$\text{i.e. } C_{deg} = C_{F1} + C_{F2} + C_{F3} + \dots + C_{Fn} \quad (4)$$

C_{Fs} is the contamination factors of all metals in a site. C_{deg} value < 8 = low degree of contamination; C_{deg} value between 8 and 16 = moderate degree of contamination; C_{deg} value between 16 and 32 = considerable degree of contamination and; C_{deg} value > 32 = very high degree of contamination [27].

$$\text{Pollution Load Index (PLI)} = (C_{F1} \times C_{F2} \times C_{F3} \times \dots \times C_{Fn})^{1/n} \quad (5)$$

C_F is the contamination factor of metal and n is the total number of metal analysed. PLI value < 1 = no heavy metal pollution; PLI value of 1 = baseline level of pollution and PLI value > 1 = heavy metal pollution [28].

$$\text{Geoaccumulation Index } (I_{geo}) = \log_2 \frac{CF_m}{CF_b \times 1.5} \quad (6)$$

CF_m is the mean concentration of metal, CF_b is the background value of the metal and 1.5 is a lithological factor of variation. I_{geo} value < 0 = practically unpolluted; I_{geo} value between 0 and 1 = unpolluted to moderately polluted; I_{geo} value between 1 and 2 = moderately polluted; I_{geo} value between 2 and 3 = moderately to strongly polluted; I_{geo} value between 3 and 4 = strongly polluted; I_{geo} value between 4 and 5 = strongly to extremely polluted and; I_{geo} value > 5 = extremely polluted [29].

$$\text{Enrichment Factor } (E_F) = \frac{CF_m/cmi}{CF_b/cbi} \quad (7)$$

CF_m/cmi is the ratio of heavy metal to immobile element in the analysed sample and CF_b/cbi is the ratio of heavy metal to immobile element in the background sample. E_F value < 2 = minimal enrichment; $2 \leq E_F < 5$ = moderate enrichment; $5 \leq E_F < 20$ = significant enrichment; $20 \leq E_F < 40$ = very high enrichment and $E_F > 40$ = extremely high enrichment [30]. In this study, Zirconium (Zr) median value in topsoil was used as reference im-

mobile element.

$$\text{Potential Ecological Risk Index (PERI)} = \sum E_f^i \quad (8)$$

E_f^i is the potential ecological factor for single heavy metal while $\sum E_f^i$ is the sum for all the metals and it is calculated by:

$$E_f^i = C_{Fs} \times T_f^i \quad (9)$$

C_{Fs} is the contamination factor and T_f^i is the response coefficient for the toxicity of single heavy metal. PERI value < 150 = low risk; $150 \leq \text{PERI} < 300$ = moderate risk; $300 \leq \text{PERI} < 600$ = considerable risk and $\text{PERI} \geq 600$ = very high risk [31]. Toxic response value (T_f^i) for Pb, Cd, Cr, Ni, Cu and Zn are 5, 30, 2, 5, 5 and 1 respectively [32].

Health risk assessment (HRA)

Hazard Quotient (HQ) and Hazard Index (HI) as indicated in USEPA risk assessment models were used to assess non-carcinogenic health risk in children and adults with regards to heavy metals in groundwater and soil in residential area around AWL. Commonest exposure routes for groundwater and soil were employed. That is, ingestion and dermal routes for groundwater while ingestion, dermal and inhalation routes for soil. Values of heavy metals in groundwater and soil in the 1-150 m and 151-300 m radii are employed for the HRA.

Ingestion route (Ing):

$$HQ_{G/S} = \frac{CM \times \text{IngR} \times EF \times ED}{BW \times AT \times RFD} \quad (10)$$

$$HI_{G/S} = \sum HQ_{G/S} \quad (11)$$

Dermal route (Der):

$$HQ_{G/S} = \frac{CM \times SA \times WAF/SAF \times DAF \times EF \times ED}{BW \times AT \times RFD} \quad (12)$$

$$HI_{G/S} = \sum HQ_{G/S} \quad (13)$$

Inhalation route (Inh):

$$HQ_s = \frac{CM \times \text{InhR} \times EF \times ED}{BW \times AT \times RFD \times PET} \quad (14)$$

$$HI_s = \sum HQ_s \quad (15)$$

$HQ_{G/S}$ is the hazard quotient due to heavy metals in groundwater/soil; CM is the concentration of heavy metal; IngR is the ingestion rate; EF is the exposure frequency; ED is the exposure duration; BW is the body weight; AT is the average time; RFD is the reference dose of heavy metals; SA is the skin surface area; WAF is the water adherence factor; SAF is the soil adherence factor; DAF is the dermal absorption factor; InhR is the inhalation rate and PEF is the particulate emission factor.

$$HI_{\text{ing/der/inh}} = \sum HQ_i \quad (16)$$

$HI_{\text{ing/der/inh}}$ is the hazard index for ingestion/dermal/inhalation route and HQ is the hazard quotient due to heavy metal. $HI > 1$ indicates a potential for adverse ef-

Table 1: Parameters used to estimate health risk in the study area [29,34,35].

Parameter	Unit	Child	Adult
Body weight (BW)	kg	15	70
Ingestion rate (IngR) (Soil)	mg/day	200	100
Ingestion rate (IngR) (Water)	L/day	1	2
Inhalation rate (InhR) (Soil)	m ³ /day	8.6	15.2
Average Water adherence factor (WAF)	μL/cm ²	5.96	5.96
Soil adherence factor (SAF)	mg/cm ²	0.2	0.07
Skin surface area (SA)	cm ²	2800	17500
Particulate emission factor (PEF)	m ³ /kg	1.32 × 10 ⁹	6.79 × 10 ⁸
Average time (AT)	days	2190	25550
Exposure frequency (EF)	days/year	360	360
Exposure duration (ED)	years	6	70
Dermal absorption factor (DAF)	-	0.001	0.001

Table 2: Reference doses (RFD) (mg/kg/day) of heavy metals via ingestion, inhalation and dermal exposure routes used for the non-carcinogenic health risk assessment.

Heavy metals	Pb	Cd	Cr	Ni	Cu	Fe	Zn
RFD Ingestion	3.5 E -3	1.0 E -3	1.5 E +0	2.0 E -2	4.0 E -2	7.0 E -1	3.0 E -1
RFD Dermal	5.3 E -4	1.0 E -3	3.0 E -3	2.0 E -2	4.0 E -2	7.0 E -1	3.0 E -1
RFD Inhalation	3.5 E -3	5.7 E -5	3.0 E -5	2.5 E -2	4.5 E -2	8.0 E -1	3.5 E -1

Table 3: Concentrations of heavy metals (mg/l) in groundwater and soil of residential area around AWL, Ibadan, Southwest-Nigeria.

Heavy metals (mg/l)	Awotan Landfill			Background			WHO limit	
	Groundwater		Soil	Groundwater Soil			Groundwater Soil	
	1-150 m (GWA)	151-300 m (GWb)	1-150 m (Sa)	151-300 m (Sb)				
Pb	0.05 ± 0.01 ^{cd(ii)}	0.03 ± 0.01 ^{a(i)}	0.66 ± 0.04 ^{d(iv)}	0.61 ± 0.03 ^{d(iii)}	0.02 ± 0.02	0.45 ± 0.02	0.010	100
Cd	0.04 ± 0.01 ^{bc(ii)}	0.02 ± 0.00 ^{a(i)}	0.43 ± 0.02 ^{c(iv)}	0.32 ± 0.02 ^{b(iii)}	0.002 ± 0.01	0.29 ± 0.01	0.003	3
Cr	0.02 ± 0.01 ^{a(i)}	nd	0.37 ± 0.03 ^{b(iii)}	0.22 ± 0.01 ^{a(ii)}	0.01 ± 0.00	0.13 ± 0.01	0.050	100
Ni	0.03 ± 0.02 ^{ab(i)}	0.02 ± 0.01 ^{a(i)}	0.29 ± 0.02 ^{a(iii)}	0.16 ± 0.04 ^{a(ii)}	0.02 ± 0.01	0.17 ± 0.00	0.070	50
Cu	0.05 ± 0.03 ^{cd(ii)}	0.02 ± 0.01 ^{a(i)}	0.89 ± 0.04 ^{f(iv)}	0.54 ± 0.03 ^{c(iii)}	0.03 ± 0.01	0.21 ± 0.01	2.000	100
Fe	0.06 ± 0.01 ^{d(i)}	0.03 ± 0.02 ^{a(i)}	0.78 ± 0.04 ^{e(ii)}	0.70 ± 0.03 ^{e(ii)}	0.03 ± 0.02	0.51 ± 0.03	na	na
Zn	0.08 ± 0.04 ^{e(i)}	0.09 ± 0.03 ^{b(i)}	1.05 ± 0.06 ^{g(ii)}	1.16 ± 0.04 ^{f(iii)}	0.03 ± 0.02	0.64 ± 0.04	na	300

*means on each column and on each row having the same alphabet and Roman numeral respectively are not significantly different ($p > 0.05$). nd = not detected; na-not available.

fect [33] (Table 1 and Table 2).

Results

Concentration of metals in groundwater and soil

The results of heavy metal analyses in groundwater and soil of residential area at 1-150 m and 151-300 m radii around AWL is summarized in Table 3. Concentration of metals were significantly different ($p < 0.05$) between groundwater and soil as well as between radii. Pb in both GWA and GWb were found to be above the WHO permissible limit as well as the background value while high level of Cd above WHO limit was only recorded in GWA. Moreover, Ni and Cu in both GWA and GWb were within the limit but above background value. Values of

all metals in soil were within WHO permissible limit. In addition, aside Zn, all analysed metals had significantly ($P < 0.05$) higher concentration at 1-150 m radius than 151-300 m radius and in soil than groundwater. Levels of analysed metals in soil were significantly higher ($p < 0.05$) than in groundwater. The order of heavy metal concentration in GWA and GWb were $Cr < Ni < Cd < Cu = Pb < Fe < Zn$ and $Cr < Cd = Ni = Cu < Pb = Fe < Zn$ respectively. The order of heavy metal concentration in Sa and Sb were $Ni < Cr < Cd < Pb < Fe < Cu < Zn$ and $Ni < Cr < Cd < Cu < Pb < Fe < Zn$ respectively.

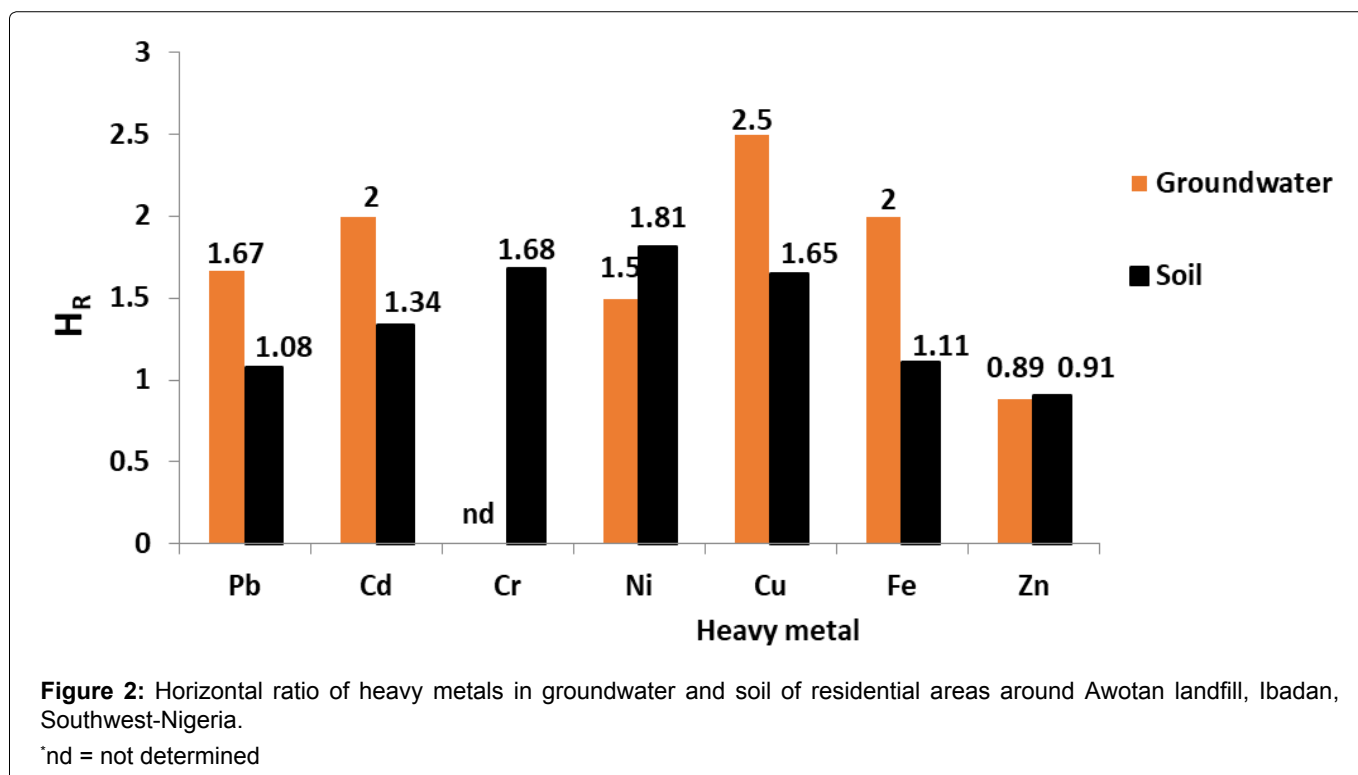
Correlation matrix of heavy metals

The result of the Pearson Correlation analysis is presented in Table 4. Correlation strength between metals

Table 4: Correlation matrix between heavy metals in groundwater and soil of residential area at 1-150 m and 151-300 m radii around Awotan landfill, Ibadan, Southwest-Nigeria.

Variables	Pb	Cd	Cr	Ni	Cu	Fe	Zn
Pb	1	0.987*	0.956*	0.932*	0.958*	1*	0.990*
Cd		1	0.991*	0.978*	0.992*	0.990*	0.955*
Cr			1	0.997*	1*	0.962*	0.907*
Ni				1	0.997*	0.940*	0.844*
Cu					1	0.904*	0.910*
Fe						1	0.987*
Zn							1

*correlation is significant at the 0.05 level (2-tailed). Correlation rating: ≥ 0.91 = very strong; 0.81-0.90 = strong; 0.51-0.80 = moderate and ≤ 0.50 = no correlation.



was in the order of Ni-Zn < Cu-Fe < Cr-Zn < Cu-Zn < Pb-Ni < Ni-Fe < Cd-Zn < Pb-Cr < Pb-Cu < Cr-Fe < Cd-Ni < Pb-Cd = Fe-Zn < Pb-Zn = Cd-Fe < Cd-Cr < Cd-Cu < Ni-Cu = Ni-Cu < Cr-Cu = Pb-Fe. There were strong to very strong positive correlations ($p < 0.05$) among all the metals and perfect associative correlation existed between Pb-Fe and Cr-Cu.

Environmental risk assessment

Horizontal ratio (H_R): The result of H_R estimated is presented in Figure 2. H_R in groundwater and soil were in the order of Cr < Zn < Ni < Pb < Cd = Fe < Cu and Zn < Pb < Fe < Cd < Cu < Cr < Ni respectively. The highest H_R which was 2.5 was recorded for Cu in groundwater and except for Zn with horizontal ratio (H_R) that was less than 1, all metals analysed in both groundwater and soil had $H_R > 1$, that is; there were higher concentration of the metals at 1-150 m radius than 151-300 m radius.

Contamination Factor (C_F), Degree of Contamination (C_{deg}) and Pollution Load Index (PLI): Result presented in Table 5 show the C_F , C_{deg} and PLI of analysed

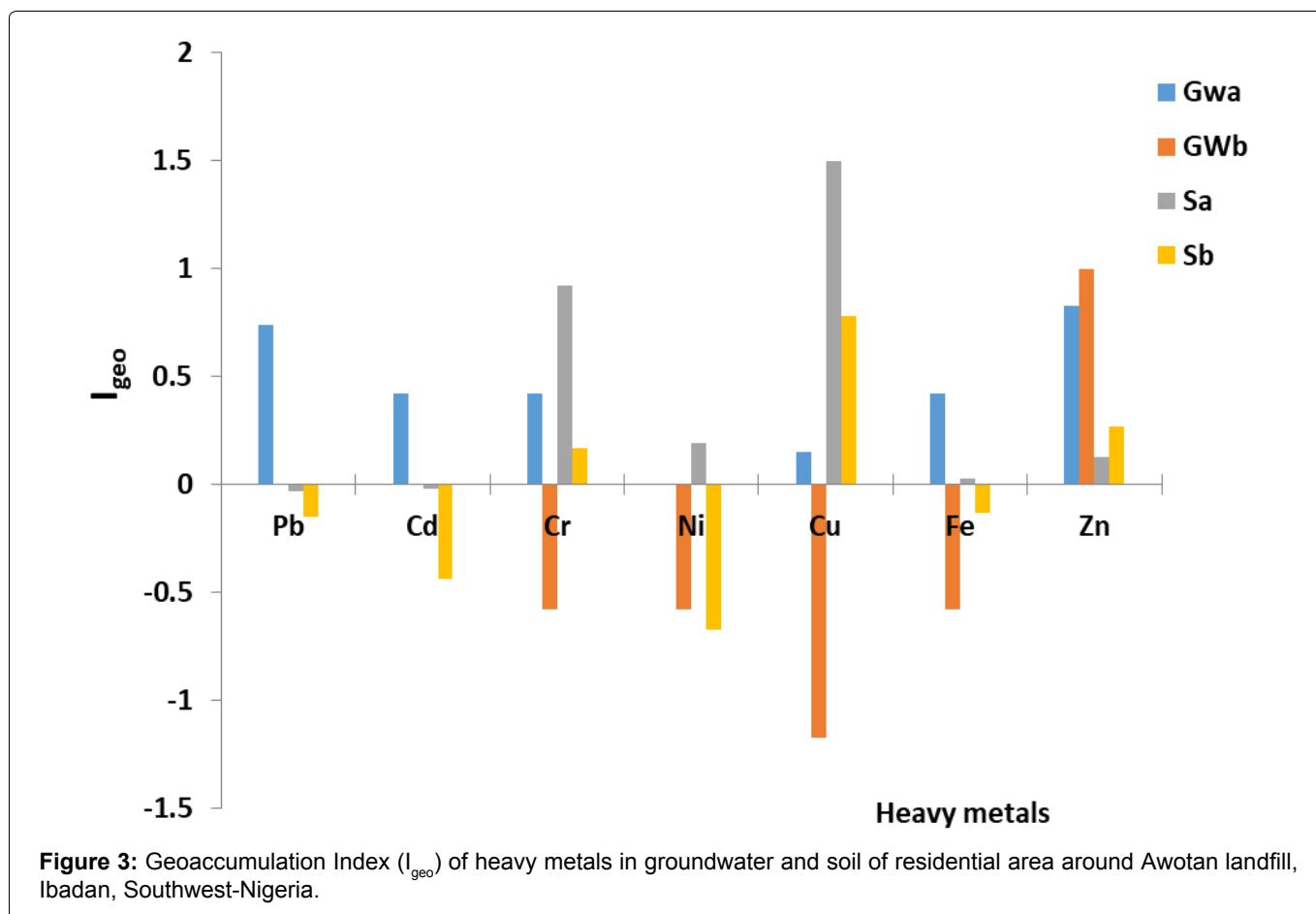
metals. C_F ranged from 1.50-2.67, 0.67-3.00, 1.47-4.24, 0.94-1.81 in GWa, GWb, Sa and Sb respectively. Cu had the highest C_F in Sa while aside Cr which was not detected in the GWa, the same metal-Cu recorded the lowest C_F in the GWb. All the studied matrices had moderate contamination except Zn in the GWb, Cu in the GWa and Ni in the Sb which had considerable contamination, low contamination and low contamination respectively. In addition, results of C_{deg} showed that heavy metals impacted moderate degree of contamination with the highest degree on Sa, Sb and GWa compared to GWb in the order of Sa > GWa > Sb > GWb. PLI was > 1 in GWa, GWb, Sa and Sb with values of 2.01, 1.17, 1.96 and 1.47 respectively.

Geoaccumulation Index (I_{geo}): As shown in Figure 3, there was practically no pollution ($I_{geo} < 0$) by: Pb and Cd in soil (both in Sa and Sb) and GWb; Cr, Ni, Cu and Fe in GWb; Ni in GWa and; Ni and Fe in Sb. However, moderate pollution was recorded at other points of the matrices by the metals. Cu accounted for the highest

Table 5: Contamination Factor (C_F), Degree of Contamination (C_{deg}) and Pollution Load Index (PLI) of heavy metals in groundwater and soil of residential area around Awotan landfill, Ibadan, Southwest-Nigeria.

Heavy metals	Groundwater C_F				Soil C_F			
	GWA		GWb		Sa		Sb	
Pb	2.50	Moderate contamination	1.50	Moderate contamination	1.47	Moderate contamination	1.36	Moderate contamination
Cd	2.00	Moderate contamination	1.00	Moderate contamination	1.48	Moderate contamination	1.10	Moderate contamination
Cr	2.00	Moderate contamination	NE	NE	2.85	Moderate contamination	1.69	Moderate contamination
Ni	1.50	Moderate contamination	1.00	Moderate contamination	1.71	Moderate contamination	0.94	Low contamination
Cu	1.67	Moderate contamination	0.67	Low contamination	4.24	Considerable contamination	2.57	Moderate contamination
Fe	2.00	Moderate contamination	1.00	Moderate contamination	1.53	Moderate contamination	1.37	Moderate contamination
Zn	2.67	Moderate contamination	3.00	Considerable contamination	1.64	Moderate contamination	1.81	Moderate contamination
$C_{deg} = \sum (C_{Fs})$	14.34	Moderate degree of contamination	8.17	Moderate degree of contamination	14.92	Moderate degree of contamination	10.84	Moderate degree of contamination
PLI	2.01	Heavy metal pollution	1.17	Heavy metal pollution	1.96	Heavy metal pollution	1.47	Heavy metal pollution

nd = not determined



I_{geo} (1.5) at Sa which corresponds to its highest C_F at this same matrix. On the average across all the matrices, Zn had the highest I_{geo} (0.56) while the least was Cd (-0.01). Furthermore, the mean value of I_{geo} of metals in the ma-

trices showed that GWb and Sb were practically unpolluted with values of -0.27 and -0.02 respectively while Gwa and Sa were moderately polluted with values 0.43 and 0.39 respectively.

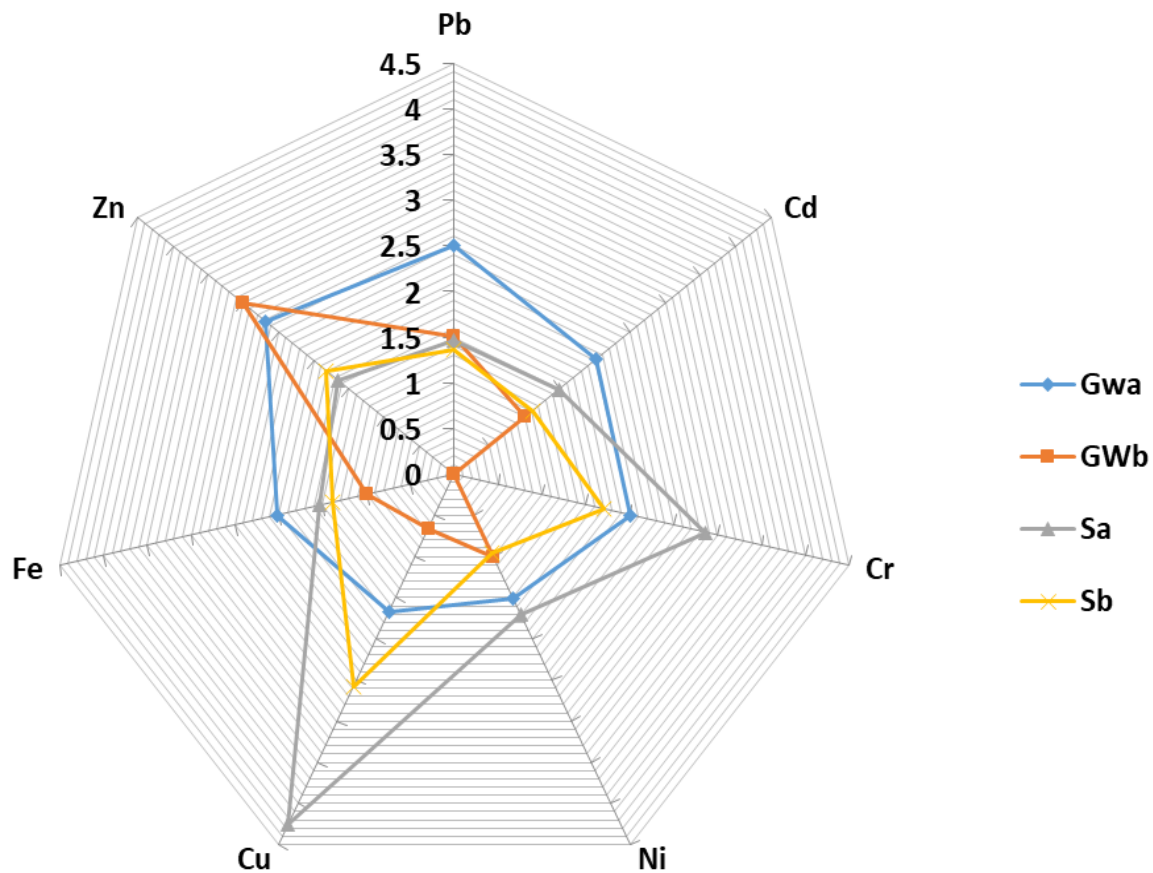


Figure 4: Enrichment Factor (E_f) of heavy metals in groundwater and soil of residential area around Awotan landfill, Ibadan, Southwest-Nigeria.

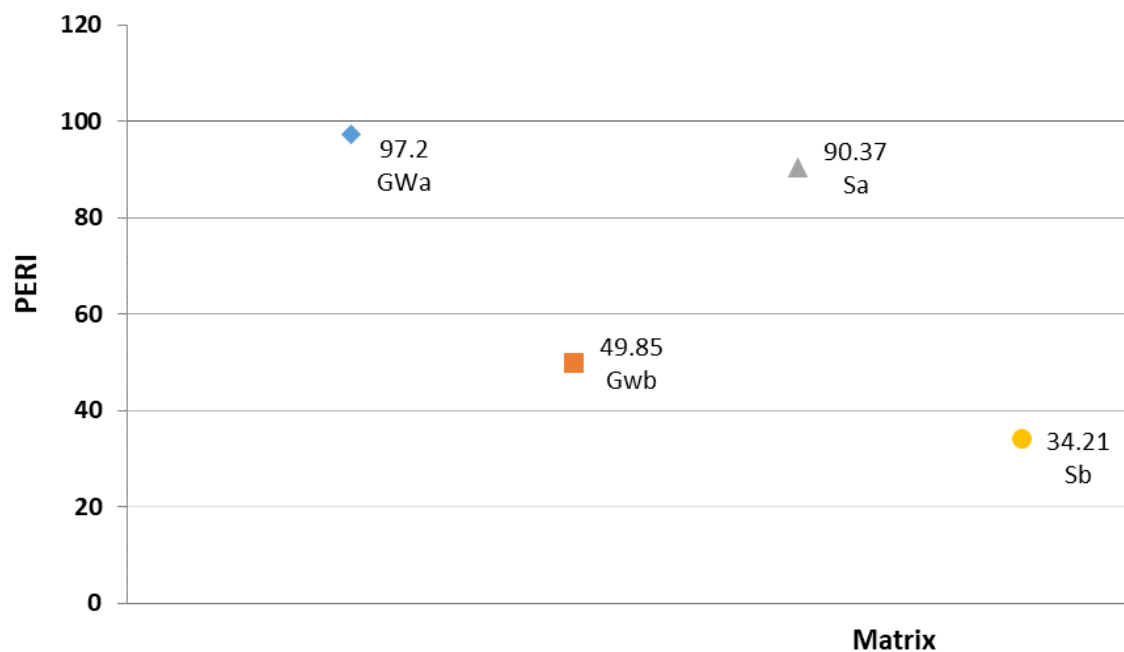


Figure 5: Potential Ecological Risk Index (PERI) of heavy metals in groundwater and soil of residential area around Awotan landfill, Ibadan, Southwest-Nigeria.

Enrichment Factor (E_f): Figure 4 shows the E_f for the metals at 1-150 m and 151-300 m radii of residential area around Awotan landfill, Ibadan, Nigeria. Cu ($E_f = 4.26$) was the most enriched metal in Sa while Zn ($E_f = 3.01$) is the most enriched in the groundwater but at

the 151-300 m radius. E_f of Pb ranged between 1.36 in Sa to 2.51 in Gwa. Cd and Ni E_f ranged between 1-2.01 and 0.95-1.71 respectively. Cr which was not detected in GWb but had its highest E_f in the Sa. Cu and Fe had their lowest E_f (0.67 and 1 respectively) in GWb and

Table 6: Hazard Quotient (HQ) associated with heavy metals in the study area.

Age group	Matrix	Ingestion													
		1-150 m							151-300 m						
		Pb	Cd	Cr	Ni	Cu	Fe	Zn	Pb	Cd	Cr	Ni	Cu	Fe	Zn
Children	Water	9.39E-1	2.63 E +0	8.72 E-4	9.86 E-2	8.22 E-2	5.64 E-3	1.75 E-2	5.64 E-1	1.32E+00	ND	6.58 E-2	3.29 E-2	2.82 E-3	1.97 E-2
	Soil	2.48 E+3	5.65 E+3	3.24 E+0	1.91 E+2	2.93 E+2	1.47 E+1	4.60 E+1	2.29 E+3	4.21E+03	1.93 E+0	1.05 E+2	1.78 E+2	1.32 E+1	5.08 E+1
Adult	Water	4.03 E-1	1.13 E+0	3.76 E-4	4.23 E-2	3.52 E-2	2.42 E-3	7.51 E-3	2.42 E-1	5.64 E-1	ND	2.82 E-2	1.41 E-2	1.21 E-3	8.45 E-3
	Soil	2.66 E+2	6.06 E+2	3.48 E-1	2.04 E+1	3.14 E+1	1.57 E+0	4.93 E+0	2.46 E+2	4.51 E+2	2.07 E-1	1.12 E+1	1.90 E+1	1.41 E+0	5.45 E+0
Age group	Matrix	Dermal													
		1-150 m							151-300 m						
		Pb	Cd	Cr	Ni	Cu	Fe	Zn	Pb	Cd	Cr	Ni	Cu	Fe	Zn
Children	Water	1.04 E+2	4.39 E+1	7.32 E+0	1.65 E +0	1.37 E+0	9.41 E-2	2.93 E-1	6.21 E+1	2.19 E+1	ND	1.10 E+0	5.49 E-1	4.70 E-2	3.29 E-1
	Soil	4.59 E +1	5.28 E+0	4.54 E+0	5.34 E-1	8.19 E-1	4.10 E-2	1.29 E-1	4.24 E+1	1.18 E+1	2.70 E+0	2.95 E-1	4.97 E-1	3.68 E-2	1.42 E-1
Adult	Water	1.39 E+2	5.88 E+1	9.80 E+0	2.20 E+0	1.84 E+0	1.26 E-1	3.92 E-1	8.32 E+1	2.94 E+1	ND	1.47 E+0	7.35 E-1	6.30 E-2	4.41 E-1
	Soil	2.15 E+1	7.42 E+0	2.13 E+0	2.50 E-1	3.84 E-1	1.92 E-2	6.04 E-2	1.99 E+1	5.52 E+0	1.27 E+0	1.38 E-1	2.33 E-1	1.73 E-2	6.67 E-2
Age group	Matrix	Inhalation													
		1-150 m							151-300 m						
		Pb	Cd	Cr	Ni	Cu	Fe	Zn	Pb	Cd	Cr	Ni	Cu	Fe	Zn
Children	Soil	8.07 E-8	3.23 E-6	5.28 E-6	4.96 E-9	8.46 E-9	4.17 E-10	1.28 E-9	7.50 E-14	2.40 E-6	3.14 E-6	2.74 E-9	5.14 E-9	3.75 E-10	1.42 E-9
	Soil	5.94 E-8	2.38 E-6	3.33 E-6	3.65 E-9	6.23 E-9	3.07 E-10	9.45 E-10	5.49 E-8	2.38 E-6	2.31 E-6	2.02 E-9	3.78 E-9	2.76 E-10	1.04 E-9

their highest as 4.26 and 2.01 respectively. At the average, the E_f of metals in all the matrices is in the order of Ni < Cd < Fe < Cr < Pb < Zn < Cu. There were minimal to moderate enrichment of metals in the studied matrices. All metals had moderate enrichment in GWA except for Ni and Cu with minimal enrichment. Meanwhile, all metals in the soil (in both radii) and GWb had minimal enrichment except for Zn in the groundwater, Cu in soil in both radii and Cr in Sa.

Potential Ecological Risk Index (PERI): PERI estimation of metals in the study area is represented in Figure 5. GWA poses the highest ecological risk (PERI = 97.2) followed by Sa (PERI = 90.37), then GWb (PERI = 49.85) and finally Sb (PERI = 34.21). However, the PERI estimation for all the metals are within 150.

Health risk assessment

Hazard quotient (HQ): The results of non-carcinogenic HQ for heavy metals (Pb, Cd, Cr, Ni, Cu, Fe and Zn) in Gwa, GWb, Sa and Sb in residential area around AWL Ibadan is presented in Table 6. HQ from ingestion of water at 1-150 m radius calculated for the metals in children and adults are < 1 except for Cd while that of ingestion of soil in this radius was > 1 for both children and adults. Within the 151-300 m radius, HQ calculated for all metals via ingestion of water (except Cd in children which was < 1) was > 1 for both the age groups while for soil in this radius; the HQ was > 1 for both children and adults except for Cr in adult. HQ evaluated for dermal exposure to water shows that Fe and Zn was < 1 for both children adult within 1-150 m radius while those of Cu, Fe and Zn were < 1 for the both age groups within 151-300 m. Meanwhile, for dermal exposure to soil in the two radii and both age groups HQ values were < 1 for Ni, Cu, Fe and Zn. HQ calculated for soil inhalation for children and adult at 1-150 m and 151-300 m radii were < 1.

Hazard index (HI): Non-carcinogenic HI estimated for the metals (Pb, Cd, Cr, Ni, Cu, Fe and Zn) in Gwa, GWb, Sa and Sb in residential area around AWL Ibadan is presented in Table 7. HI due to inhalation of soil was found to be < 1 for both children and adult while those due to ingestion and dermal absorption were > 1 except for water ingestion by adult (with HI = 0.86) at GWb. HI values due to ingestion pathway by children were 3.77, 2.01, 8677.94 and 6848.93 while that by adults were

1.62, 0.86, 930.65 and 734.27 in Gwa, GWb, Sa and Sb respectively. HI due to dermal pathway by children were 158.63, 86.03, 57.24 and 56.51 while that by adults were 212.16, 115.31, 31.76 and 21.15 in Gwa, GWb, Sa and Sb respectively. HI for inhalation of soil was < 1 for children and adults at both studied radii.

Discussion

Solid wastes pose enormous environmental and health risk when found in residential homes, due to various toxic elements that are leached or transported from the hazardous components of the wastes to the adjoining groundwater and soil environment. In this study, strong positive correlation evaluated among all the metals is indicative of similarity of source and geochemical behaviour of the metals [36] while perfect associative correlation between Pb-Fe and Cr-Cu could mean that they are of absolute the same pollution and/or geochemical source. The landfill had contributed enormously, probably via runoff or underground flow, to the Cu concentration of the surrounding groundwater more than other metals analysed because Cu had the highest value of horizontal ratio (H_r) in the groundwater matrix. The fact that all metals aside Zn had H_r > 1 could be attributed to the landfill as the source of the metals and the heavy metal transportation occurred from the landfill to the surrounding environmental matrices. Meanwhile in the case of Zn with H_r < 1, the parental bedrock at 151-300 m radius had possibly released the metal to the soil surface and groundwater and could not have been due to the dumpsite.

Generally, the moderate or low values of contamination factor (C_f), degree of contamination (C_{deg}), pollution load index (PLI), geoaccumulation index (I_{geo}), enrichment factor (E_f) and potential ecological risk index (PERI) signifies that Awotan landfill poses low environmental risk as at the time and season when the study was carried out. However, this does not preclude potential high environmental risk at another season or upon a long time existence of the landfill. PLI > 1 suggests that there is heavy metal pollution in the study area [37]; therefore it calls for corrective environmental management of the landfill. I_{geo} provides good index of soil pollution [38] but the results indicated practically no pollution to moderate pollution level of the study area. The result of E_f further corroborate that the land-

Table 7: Hazard Index (HI) of heavy metals via ingestion, dermal and inhalation routes in children and adults in residential areas around Awotan Landfill, Ibadan, Southwest-Nigeria.

Age group	Matrix	1-150 m			151- 300 m		
		Ingestion	Dermal	Inhalation	Ingestion	Dermal	Inhalation
Children	Water	3.77	158.63	nd	2.01	86.03	nd
	Soil	8677.94	57.24	8.61E-6	6848.93	56.51	5.55E-6
Adults	Water	1.62	212.16	nd	0.86	115.31	nd
	Soil	930.65	31.76	5.78E-6	734.27	21.15	4.75E-6

nd = not determined

fill might currently have low metal loading to the surrounding groundwater and soil but on a long run, could be aggravated through continuous accumulation and pose serious environmental and health risks. Hence, a level of anthropogenic influence resulting from the landfill had contributed to heavy metal contamination of its surrounding groundwater and soil [21]. The results of PERI for all metals implied that the landfill posed low ecological risk [34].

The calculated hazard quotient (HQ) suggested that Pb, Cr, Ni, Cu, Fe and Zn from ingestion of groundwater pose no health hazard as against Cd that could do otherwise to children and adult residing at 1-150 m distance from AWL. Furthermore, ingestion of soil within 1-150 m by children and adults pose health hazard since HQ values was not within an acceptable level of non-carcinogenic adverse health risk. Calculated HQ from ingestion of water at 151-300 m radius revealed that only children were at risk of health hazard due to Cd while other metals did not pose any health threat to children and adults. Meanwhile, the metals pose health risk hazard to children and adults (except for Cr to adults) via soil ingestion. HQ calculated from dermal exposure pathway revealed that Fe and Zn in water; and Ni, Cu, Fe and Zn in soil did not pose any health risk hazard to children and adults residing within 1-150 m radius but it is so at 151-300 m radius. The results of HQ calculated based on inhalation of soil by children and adults showed that HQ values were within acceptable range of non-carcinogenic adverse health risk as HQ was found far below 1. This implies that inhalation of soil do not pose health hazard to children and adults living within the studied radii of residential area of AWL. HI calculated suggested that exposure to contaminated soil via ingestion and dermal routes poses health risk to children and adults while via inhalation does not.

Conclusion

Correlation between analysed metals indicated that the metals originated from the same source. In addition, result of horizontal ratio largely revealed that heavy metals are transported from the landfill to the adjoining residential areas except for Zn which could be due to its influx from the natural bedrock present at the distant area of the landfill. Generally, environmental risk due to Awotan landfill was low or moderate as revealed by the results of estimated environmental risk indices. However, health index calculated for the heavy metals through ingestion and dermal absorptions signified health risk while that of inhalation indicated practically no health risk.

It is worthy of note that this research showed that children and those living closer to Awotan landfill were at greater health risks compared to adults and those living farther away from the landfill respectively. Therefore, people residing close to the landfill should be educated on dangers associated with living around the

landfill. The landfill should be sanitarily reconstructed while concerned regulatory agency should enforce acceptable standards in managing the landfill thereafter.

References

1. Adewole AT (2009) Waste management towards sustainable development in Nigeria: A case study of Lagos State. *Int NGO J* 4: 173-179.
2. Anetor JL, Anetor GO, Iyanda AA, Adeniyi FAA (2008) Environmental chemicals and human neurotoxicity: Magnitude, prognosis and markers. *Afr J Biomed Res* 11: 1-12.
3. Oyeku OT, Eludoyin AO (2010) Heavy metal contamination of groundwater resources in a Nigerian urban settlement. *Afr J Environ Sci & Tech* 4: 201-214.
4. Sulaimon AM, Akinwotu OO, Amoo OT (2015) Resistance of bacteria isolated from Awotan dumpsite leachate to heavy metals and selected antibiotics. *Int J Res in Pharm Biosci* 2: 8-17.
5. Ludwig C, Hellwed S, Stucki S (2003) Municipal solid waste management: Strategies and technologies for sustainable solutions. (1st edn), Springer-Verlag, Berlin Heidelberg, New York.
6. Adeolu OA, Gbenga AA, Adebayo AO (2009) Municipal landfill leachate characterization and its induction of glycogen vacuolation in the liver of *Clarias gariepinus*. *Int J Environ Prot* 2: 20-24.
7. Koki IB, Bayero AS, Umar A, Yusuf S (2015) Health risk assessment of heavy metals in water, air, soil and fish. *Afr J Pure and Appl Chem* 9: 204-210.
8. Adewoye SO, Fawole OO (2002) Bioconcentration of metals in the tissue of *Clarias gariepinus* fingerlings exposed to lethal concentration of cassava Waste water. *World J Biotechnol* 3: 465-468.
9. Farombi EO, Adelowo OA, Ajimoko YR (2007) Biomarkers of oxidative stress and heavy metal levels as indicators of environmental pollution in African Cat fish (*Clarias gariepinus*) from Nigeria Ogun River. *Int J Environ Res Pub Health* 4: 158-165.
10. Wang J, Chen S, Xia T (2010) Environmental risk assessment of heavy metals in Bohai Sea, North China. *Procedia Environ Sci* 2: 1632-1642.
11. Steenland K, Boffetta P (2000) Lead and cancer in humans: where are we now? *Am J Ind Med* 38: 295-299.
12. Singh R, Gautam N, Mishra A, Gupta R (2011) Heavy metals and living systems: An overview. *Indian J Pharm* 43: 246-253.
13. Jarup L, Hellstrom L, Alfven T, Carlsson MD, Grubb A, et al. (2000) Low level exposure to cadmium and early kidney damage: the OSCAR study. *Occup Environ Med* 57: 668-672.
14. Martin S, Griswold W (2009) Human health effects of heavy metals. Centre for Hazardous Substance Research. Kansas State University Manhattan.
15. Cooper RG (2008) Zinc toxicology following particulate inhalation. *Indian J Occup Environ Med* 12: 10-13.
16. Mohamed EAS, Gad NS (2008) Environmental pollution-induced biochemical changes in tissues of *Tilapia Zilli*, *Solea vulgaris* and *Mugil capito* from Lake Qarun, *Glob Veterinaria*, Egypt. 2: 327-336.
17. Zambelli B, Ciurli S (2013) Nickel and human health. *Met Ions Life Sci* 13: 321-357.

18. Haddad HH (2012) The effect of heavy metals cadmium, chromium and iron accumulation in human eyes. *Afr J Analy Chem* 3: 710-713.
19. Lushenko MA (2010) A risk assessment for ingestion of toxic chemicals in fish from imperial beach, California: San Diego State University, Masters of Public Health, 1-211.
20. Adamu CI, Nganje TN, Edet A (2015) Heavy metal contamination and health risk assessment associated with abandoned barite mines in Cross River State, South eastern Nigeria. *Environ Nanotechnol Monit Manage* 3: 10-21.
21. Odokoya AM, Olobaniyi SB, Oluseyi TO, Adeyeye UA (2017) Health risk associated with some toxic elements in surface water of Ilesha gold mine sites, southwest Nigeria. *Environ Nanotech Monit Mgt* 8: 290-296.
22. Amadi CN, Bede O, Dike DO, John KN, Orisakwe OE (2012) Heavy metals health risk assessment for population via consumption of food crops and fruits in Owerri, South Eastern, Nigeria. *Chem Cent J* 6: 77.
23. Edogbo B, Uchendu C (2020) Risk analysis of heavy metal contamination in soil, vegetables and fish around Challawa area in Kano State, Nigeria. *Scientific African* 7: e00281.
24. Adesewa A, Morenikeji O (2017) Helminths and heavy metals in soils from a dumpsite in Ibadan city, Nigeria. *J Prev Med Hyg* 58: E328-E333.
25. Osinowo OO, Omiyale EO (2018) Integrated electromagnetic (EM) and electrical resistivity tomography (ERT) geophysical studies of environmental impact of Awotan dumpsite in Ibadan, southwestern Nigeria. *J Afr Earth Sci* 140: 42-51.
26. Likuku AS, Khumoetsile B, Molawa M, Gaboutloeloe GK (2013) Assessment of heavy metal enrichment and degree of contamination around the copper-nickel mine in the Selebi Phikwe Region, Eastern Botswana. *Environ Ecol Res* 1: 32-40.
27. Rastmanesh F, Moore F, Kopaei MK, Keshavarzi B, Behrouz M (2010) Heavy metal enrichment of soil in Sarcheshmeh copper complex, Kerman Iran. *Environ Earth Sci* 62: 329-336.
28. Tariq Javed, Nasir Ahmad, Azhar Mashiatullah (2018) Heavy metals contamination and ecological risk assessment in surface sediments of Namal Lake, Pakistan. *Pol J Environ Stud* 27: 681-688.
29. Müller G (1969) Index of geoaccumulation in sediments of the Rhine River. *Geojournal* 2: 108-118.
30. Yongming H, Peixuan D, Junji C, Posmentier ES (2006) Multivariate analysis of heavy metal contamination in urban dusts of Xi'an, Central China. *Sci Total Environ* 355: 176-186.
31. Shunhong Huang, Cuiyu Yuan, Qian Li, Yi Yang, Chongjian Tang (2017) Distribution and Risk Assessment of Heavy Metals in Soils from a Typical Pb-Zn Mining Area. *Pol J Environ Stud* 26: 1105-1112.
32. Kalfakakour V, Akrida-Demertzi K (2000) Transfer factor of heavy metals in aquatic organisms of different trophic levels. In: *HTML Pub.* 1: 768-778.
33. Saha N, Rahman MS, Ahmed MB, Zhou JL, Ngo HH, et al. (2016) Industrial metal pollution in water and probabilistic assessment of human health risk. *J Environ Manag* 185: 70-78.
34. USEPA (2014) Risk Assessment Guidance for Superfund Volume 1. Human Health Evaluation Manual (Part E Supplemental Guidance for Dermal Risk Assessment). US Environmental Protection Agency, Washington DC.
35. Beijing Municipal Research Institute of Environmental Protection (BMRIEP) (2009) Environmental Site Assessment Guideline. Beijing: DB11/T656-2009 (In Chinese).
36. Mmolawa KB, Likuku AS, Gaboutloeloe GK (2011) Assessment of heavy metal pollution in soils along major roadside areas in Botswana. *Afr J Environ Sci Tech* 5: 186-196.
37. Nowrouzi M, Pourkhabbaz A (2014) Application of geo-accumulation index and enrichment factor for assessing metal contamination in the sediments of Hara Biosphere Reserve, Iran. *Chem Speciat Bioavailability* 26: 99-105.
38. Oyebamiji A, Amanambu A, Zafar T, Adewumi AJ, Akinyemi DS (2018) Expected impacts of active mining on the distribution of heavy metals in soils around Iludun-Oro and its environs, Southwestern Nigeria. *Cogent Environ Sci* 1495046: 1-21.